



Cover:

Jean—François Raffaëlli (French 1850—1924)
Raffaëlli, son portrait par lui-même (Self-Portrait)
4 color drypoint on laid paper
7 7/16 by 6 3/16 inches
Collection of the Georgia Museum of Art
Gift of The University of Georgia Foundation
72/E/2858

THE UNIVERSITY OF GEORGIA

ATHENS
30602

OFFICE OF THE PRESIDENT

January 3, 1977

Dear Colleague:

The University of Georgia Fact Book was first published in 1970. Its purpose is to provide a ready source of basic factual information for use in answering common questions regarding the University, preparing grant proposals, developing long-range plans, replying to questionnaires, recruiting new faculty members and preparing speeches for various occasions.

Fact Book 1976 is being distributed to each faculty member of the University. We hope you will find it helpful and that it will enhance your understanding of the scope and progress of your University. Your comments and suggestions on this publication will be welcome.

Sincerely,

A handwritten signature in cursive script that reads "Fred C. Davison". The signature is written in dark ink and is positioned above the printed name and title.

Fred C. Davison
President

UNIVERSITY OF GEORGIA FACT BOOK 1976

THE UNIVERSITY OF GEORGIA
INSTITUTIONAL RESEARCH AND PLANNING
310 NEW COLLEGE (404) 542-8832
ATHENS, GEORGIA 30602

January 3, 1977

The *University of Georgia Fact Book* has become both an important and enjoyable project of the Office of Institutional Research and Planning. In fact, the *Fact Book* and Institutional Research and Planning have much in common: both are intended to provide useful and up-to-date information on the University and its programs.

We hope both the *Fact Book* and the Office of Institutional Research and Planning will serve the informational needs of the University community. We sincerely solicit comments and suggestions on the *Fact Book* to make it a better data reference, and we encourage those who have need for more detail or additional data needs to contact our office. Obviously the *Fact Book* cannot be a definitive work on the University, but if it can be more inclusive, or if we can provide specific detail as needed, we will do our best to honor the requests.

It is clear, from the data sources listed in the *Fact Book* that Institutional Research and Planning is indebted to many offices and people at the University for the information in the *Fact Book*. We'd like to thank those who have provided data for *Fact Book 1976* and relieve them from any error of format or presentation. A special word of appreciation needs to be given to Anne Coleman who composed the book and to the University Printing Department who produced the final copy.

Larry G. Jones, Associate Director
Lois Lockyer, Technical Writer

TABLE OF CONTENTS

	Page
List of Figures	vii
GENERAL INFORMATION	
University of Georgia Perspective	2
Purpose	3
Institutional and Professional Accreditation	4
ADMINISTRATION	
Members and Officers of the Board of Regents	6
Staff of the Board of Regents	6
Central Administrative Officers	7
Colleges and Schools: Date of Establishment and Dean	7
Institutes and Service Units	9
University Council Standing Committees	9
ADMISSIONS	
New Freshmen: Fall 1960-1976	12
High Schools From Which Ten or More Students Entered	
As Freshmen: Fall 1976	13
Mean College Scholastic Aptitude Test Scores for Freshman Classes:	
Fall 1960-1976	14
Grade Point Averages For Transfer Students: Fall 1976	16
Georgia Colleges and Universities From Which Students Transferred	
to The University of Georgia: Fall 1976	17
ENROLLMENT	
Fall Quarter Enrollment by Level by Sex: 1960-1976	20
College Enrollment By Quarter: FY 1965-66 - 1976-77	24
Cumulative Resident and Non-Resident Campus Enrollment: 1960-1976	27
Cumulative Campus Enrollment by State	28
Foreign Students and Exchange Visitors by Country: Fall 1976	29
DEGREES CONFERRED	
Degree Majors: 1976	32
Total Degrees Conferred by School or College	39
Degrees Conferred 1960-1970 by Year and School	44
Degrees Conferred 1971-1976 by Year, School, Sex	47

ACADEMIC INFORMATION

Class Sizes, Course Sections: Regular Enrollment: FY 1974-1976	52
Total University Student Credit Hours: FY 1975-76	52
Student Class Rank by Student Classification: Fall Quarter 1976 Cumulative Grade Point Average	53
Distribution of Student Credit Hour Loads: Fall Quarter 1976	54
Honors Program Enrollment and Sections: FY 1975-1976	55
Honors Program Awards	55
Distribution of Honors Students by Major and Class: Fall 1976	56
Statistical Analysis of Advanced Placement	57
Distribution of Grades by Class: Fall Quarter 1974-76	58
Graduate Fellowships and Assistantships Awarded Through the Graduate School: Fall 1976	59
Graduate Teaching and Research Assistantships Supported by Departments: Fall 1976	59

STUDENT RELATED INFORMATION

Division of Student Affairs	62
Career Planning and Placement Services	63
Financial Aid Programs: University Administered	64
Financial Aid Programs: Private and State Administered	65
Social Sororities and Fraternities	66
Honorary Fraternities at The University of Georgia	67
Selected Personal Characteristics of Students: Fall 1976	68
Student Housing: Residence Halls	70
Student Housing: Married Student Housing	71
Student Housing: University Owned Sorority and Fraternity Houses	71
Student Housing: Sorority and Fraternity Owned Houses	72
Student Housing: Student Residences Summary	73
University Health Service Activity	74
Georgia Athletic Association Board of Directors	75
Georgia Head Coaches	76
Athletes at The University of Georgia: Fall 1976	77
Academics Pertaining to Men Athletes on Scholarship	77
Academics Pertaining to Women Student/Athletes	77
Southeastern Conference Championships Won by Georgia	78
Georgia Athletic Training Facilities	78

FACULTY AND STAFF

Faculty and Allied Professional Staff by Rank and Function: June 30, 1976	80
Faculty and Allied Professional Staff by Rank and Function: September 30, 1976	80
Schedule of Faculty Salaries	81
Tenure, Graduate Faculty Membership, and Special Chairs by Rank: September 30, 1976	81
Highest Earned Degrees of Faculty and Allied Professional Staff by Rank	82
Tenured and Non Tenured Faculty by Age: September 30, 1976	83
Faculty by Length of Service: September 30, 1976	83
University Employees by Occupational Classification	84

FINANCIAL INFORMATION

Sources of Revenue: July 1, 1975 - June 30, 1976	86
Expenditures by Budgetary Function: July 1, 1975 - June 30, 1976	87
State of Georgia Appropriations: 1960-61 - 1976-77	88
Sources of Unrestricted Revenue for Resident Instruction: 1960-61 - 1976-77	89
Source of Instructional Institute Funds From Contracts and Grants by Sponsoring Agency: FY 1976	90
Comparison of Budgeted Research Funds From All Sources	91
Comparison of Budgeted Services Funds From All Sources	91
Source of All Research Funds: FY 1975-1976	92
Source of Grant and Contract Research Funds	94
Source of Research Funds From Grants and Contracts by Agency: FY 1975-1976	96
Source of All Services Funds: FY 1975-1976	98

RESEARCH, SERVICE, AND AUXILIARY UNITS

Agricultural Experiment Stations	102
Bureau of Educational Studies and Field Services	102
Campus Bus System	102
Central Duplicating Service	102
Central Office Supply	102
Cooperative Extension Service	103
The Divisions of Research and Services: College of Business Administration	103
The Georgia Center for Continuing Education	103
Georgia Museum of Art	104

RESEARCH, SERVICE, AND AUXILIARY UNITS (cont'd)

The Georgia Review	104
The Institute for Behavioral Research	104
Institute of Community and Area Development	104
The Institute of Continuing Legal Education in Georgia	104
Institute of Ecology	105
The Institute of Government	105
Institute of Higher Education	105
The Institute for Natural Products Research	105
The Institute of Natural Resources	106
Instructional Resources Center	106
Marine Extension Service	106
Marine Institute	106
Office of Computing Activities	107
Office of Development and University Relations	107
Office of General Research	107
Office of Institutional Research and Planning	108
Poultry Disease Research Center	108
Public Safety Division	108
Research Shops and Facilities	108
Rural Development Center	109
University Bookstore	109
University Food Services	109
The University of Georgia Botanical Garden	109
University of Georgia Golf Course	109
University of Georgia Libraries	110
University of Georgia Press	111
The University of Georgia Research Park	111
University Printing Department	112
Veterinary Medical Experiment Station	112

PHYSICAL FACILITIES

University of Georgia Main Campus	114
Number of Rooms by Basic Room Types	114
Utilization of Instructional Facilities: Fall 1976	114
Building Cost Summary by Years of Completion: Main Campus	115
Major Academic Buildings and Date of Initial Occupancy	116
Major Building Projects Completed 1960-1976	118
Projects Currently Under Construction	125
Authorized Projects Being Planned	125
Land Holdings	126

LIST OF FIGURES

	Page
Figure 1. The University of Georgia Administrative Organization	8
Figure 2. SAT Scores For Entering Freshmen: Fall Quarter 1967-1976	15
Figure 3. Total Undergraduate Enrollment: Fall Quarter 1960-1976	21
Figure 4. Total Graduate and Professional Enrollment: Fall Quarter 1960-1976	22
Figure 5. Total Degrees Conferred: 1960-1976	40
Figure 6. Doctoral Degrees Conferred : 1960-1976	41
Figure 7. Masters Degrees Conferred: 1960-1976	42
Figure 8. Professional Degrees Conferred: 1960-1976	43

GENERAL INFORMATION

UNIVERSITY OF GEORGIA PERSPECTIVE

Just after the close of the American Revolution, the Georgia legislature, made up of bold and far-seeing men, took a step that soon was to start another revolution — this one in the history of higher education.

In 1785 the legislature granted a charter to The University of Georgia — the nation's first state university charter, and the first public recognition that a state has a duty to provide for the higher education of its citizens.

The infant university had no campus, no money, no faculty, and — in fact — no students. For 16 years it existed on paper only, for it was not until 1801 that a site was selected for the campus and the first few students began to trickle into the newly-formed town of Athens, then at the edge of the frontier.

The faculty that first year consisted of one man, the college president. Classes, just as often as not, were conducted under the trees or in the president's house, while the University waited hopefully for its first building to be raised.

From such a small beginning the University has grown to more than 21,000 students. A new campus and 12 schools and colleges have been added to the original Franklin College, the nucleus of the University and now the Franklin College of Arts and Sciences. More than 200 major buildings have been added to the University plant; the campus, including forestry and agriculture areas, consists of some 32,000 acres. Off-campus centers and agricultural experiment stations take university services to all parts of the state.

But growth and time have not altered everything at Georgia. The tree-shaded campus is rich in tradition. Reminders of the University's early beginnings are Old College, the Arch at the campus entrance, the 140 year-old Chapel. The same Chapel bell that called students to classes more than a century ago is still the chief herald of athletic victories of the "Bulldogs."

The long and interesting history of The University of Georgia cannot be summarized easily. For a more detailed history, E.M. Coulter's history, *College Life in the Old South; A Historical Sketch of the University of Georgia*, by A.L. Hull; and H.C. Tuck's *Four Years at the University of Georgia, 1877-1881*, are available in the Special Collections Room in the Ilah Dunlap Little Memorial Library.

While it is equally difficult to capsulize the dynamism of the modern day university in a quantitative summary such as this, it is hoped that FACT BOOK 1976 will capture in a statistical way much of the qualitative sense of growth, vitality and excellence that has become The University of Georgia.

PURPOSE

The University of Georgia is the State's oldest, most comprehensive, and diversified institution of education. As the capstone of the University System of Georgia, its influence permeates the entire structure and organization of education in the State of Georgia, and it serves practically all of the educational needs of the State's increasingly complex and technologically oriented society. A vital aspect of the University's role is that of leadership in creating a pace of achievement and a climate of intellectual and cultural development relative to all other units in the University System of Georgia and to all of the State as well.

Teaching is historically the oldest function and purpose of the University and continues to be its primary and most important purpose and responsibility. Through its various degree programs the University makes its greatest single contribution to the State and region. The teaching programs of the University seek to provide the broadest possible educational opportunities for the youth of the State and to prepare them for a variety of careers and professions.

The special strength of the University in meeting this responsibility lies in the scope and diversity of the programs it offers at all levels of higher education. On the undergraduate level the University offers 14 baccalaureate degree programs, with major concentrations available in approximately 190 different fields through the framework of 115 different academic departments. On the graduate level the University offers work toward 18 master's degrees in approximately 125 areas of concentration, and 3 doctoral degrees (Ph.D., Ed.D., D.P.A.) in approximately 73 areas of concentration. Professional degree programs are offered in the School of Law, the College of Veterinary Medicine, the School of Pharmacy, the School of Social Work, and the School of Forest Resources. In addition a variety of noncredit programs are offered through the Georgia Center for Continuing Education in cooperation with the 13 schools and colleges comprising the University.

An important responsibility of the University of Georgia is to provide special programs of excellence for the State's academically superior students. The State's most talented youth are among its most valuable resources, and it should not be necessary for them to leave the State of Georgia to seek opportunities for the fullest development of their talents.

As the capstone of the University System and of higher education in the State of Georgia, the University must continue to be the one major institution with a diverse and comprehensive program of graduate education. One of the most important academic developments at the University during the past decade has been its emergence as a major institution of graduate education with regional and national significance. The continuing vitality of the University's graduate educational programs depends upon a strong commitment to basic and applied research in all of the academic disciplines. In addition the University, through its research function, must seek to expand the frontiers of knowledge so as to provide the expertise and resources that are necessary to cope with the difficult and complex problems facing the State and to improve the quality of human life in the State.

In its public service function the University seeks to extend the teaching and educational function to the adults of the State of Georgia and to apply knowledge to the problems of society. The concept of higher education is no longer limited to students between the years of 18 and 25 seeking one of the traditional degrees. The University's many resources must be made available for the continuing education of adults and for the application of academic expertise to the resolution of societal problems.

INSTITUTIONAL AND PROFESSIONAL ACCREDITATION

Institutional Accreditation

Southern Association of Colleges and Schools

Professional Accreditations

Art: National Association of Schools of Art
(Candidate for Accreditation)

Business: American Assembly of Collegiate Schools of Business

Chemistry: American Chemical Society

Engineering: Agricultural Engineers' Council for Professional Development

Forestry: Society of American Foresters

Journalism: American Council on Education for Journalism

Landscape Architecture: American Society of Landscape Architects

Law: American Bar Association; Association of American Law Schools

Music: National Association of Schools of Music

Pharmacy: American Council on Pharmaceutical Education

Psychology (Clinical): American Psychological Association

Social Work: Council on Social Work Education

Speech Pathology and Audiology: American Speech and Hearing Association

Teacher Education: National Council for the Accreditation of Teacher Education

Veterinary Medicine: American Veterinary Medical Association

ADMINISTRATION

MEMBERS AND OFFICERS OF THE BOARD OF REGENTS
(Term of Office)

John A. Bell, Jr., *Dublin*
Chairman
State-at-Large (1970-1977)

Jesse Hill, Jr., *Atlanta*
State-at-Large (1973-1978)

Milton Jones, *Columbus*
State-at-Large (1974-1981)

Lamar R. Plunkett, *Bowdon*
State-at-Large (1974-1981)

Rufus B. Coody, *Vienna*
State-at-Large (1976-1983)

Erwin A. Friedman, *Savannah*
First District (1976-1983)

Charles T. Oxford, *Albany*
Vice Chairman
Second District (1975-1982)

John H. Robinson, III, *Americus*
Third District (1972-1979)

John R. Richardson, *Conyers*
Fourth District (1970-1977)

Elridge W. McMillan, *Atlanta*
Fifth District (1975-1982)

David H. Tisinger, *Carrollton*
Sixth District (1971-1978)

James D. Maddox, *Rome*
Seventh District (1972-1980)

Charles A. HARRIS, *Ocilla*
Eighth District (1971-1978)

P. Robert Smith, *Winder*
Ninth District (1973-1980)

Carey Williams, *Greensboro*
Tenth District (1972-1979)

STAFF OF THE BOARD OF REGENTS

George L. Simpson, Jr.
Chancellor

John W. Hooper
Vice Chancellor

Henry G. Neal
Executive Secretary

Shealy E. McCoy
Vice Chancellor-
Fiscal Affairs and Treasurer

Frank C. Dunham
Vice Chancellor-
Construction and Physical Plant

Mario J. Goglia
Vice Chancellor-Research

Joseph C. Hammock
Vice Chancellor-
Academic Development

Howard Jordan, Jr.
Vice Chancellor-Services

Harry B. O'Rear
Vice Chancellor-Health Affairs

Haskin R. Pounds
Assistant Vice Chancellor

James L. Carmon
Assistant Vice Chancellor-
Computing Systems

Mary Ann Hickman
Assistant Vice Chancellor-
Personnel

Robert M. Joiner
Assistant Vice Chancellor-
Communications

W. Coye Williams
Assistant Vice Chancellor-
Academic Development

Harry H. Murphy, Jr.
Director of Public Information

L. Harlan Davis
Director, Interinstitutional Programs
in International Affairs

CENTRAL ADMINISTRATIVE OFFICERS

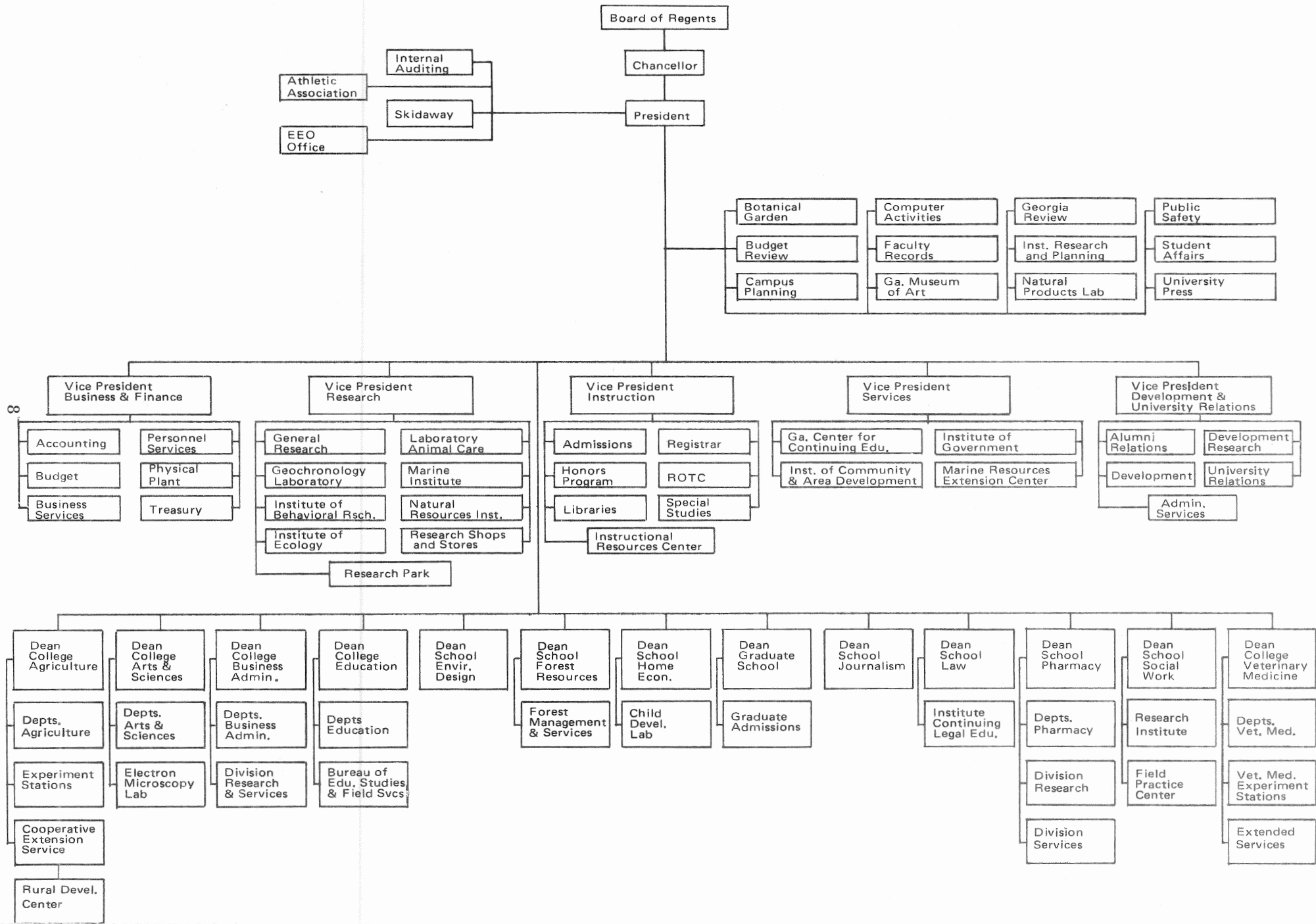
Fred C. Davison	President
William A. Owens	Acting Provost
William L. Hays*	Vice President for Instruction
M. Louise McBee	Assistant Vice President
Robert C. Anderson	Vice President for Research
Charles H. Douglas	Assistant Vice President
S. Eugene Younts	Vice President for Services
Allan W. Barber	Vice President for Business and Finance
H. Perk Robins	Vice President for Development and University Relations
J. Donald Elam	Associate Vice President
Louis T. Griffith	Assistant Vice President

*Resigned effective 1-1-77

COLLEGES AND SCHOOLS DATE OF ESTABLISHMENT AND DEAN

College of Arts and Sciences	1801	John C. Stephens, Jr.
School of Law	1859	J. Ralph Beard
School of Pharmacy	1903	Kenneth L. Waters
College of Agriculture	1906	Henry W. Garren
School of Forest Resources	1906	Allyn M. Herrick
College of Education	1908	Joseph A. Williams
Graduate School	1910	Hardy M. Edwards, Jr.
College of Business Administration	1912	William C. Fleweller, Jr.
School of Journalism	1915	Scott M. Cutlip
School of Home Economics	1933	Emily H. Pou
College of Veterinary Medicine	1946	David P. Anderson
School of Social Work	1964	Charles A. Stewart
School of Environmental Design	1969	Robert P. Nicholls

Figure 1
 THE UNIVERSITY OF GEORGIA
 Administrative Organization



INSTITUTES AND SERVICE UNITS

<i>Unit</i>	<i>Director</i>
Agricultural Experiment Stations	W. P. Flatt
Bureau of Educational Studies and Field Services	Doyne Smith
Campus Planning	William E. Hudson
Cooperative Extension Service	Charles P. Ellington
Divisions of Research and Services:	
College of Business Administration	Albert W. Niemi
Georgia Center for Continuing Education	Thomas W. Mahler
Georgia Museum of Art	William D. Paul, Jr.
Georgia Review	John T. Irwin
Institute for Behavioral Research	William A. Owens
Institute for Natural Products Research	S. William Pelletier
Institute of Community and Area Development	Ernest E. Melvin
Institute of Continuing Legal Education	James W. Curtis
Institute of Ecology	Eugene P. Odum
Institute of Government	Delmer D. Dunn
Institute of Higher Education	Cameron L. Fincher
Institute of Natural Resources	Albert S. Johnson, Acting
Institutional Research and Planning	David G. Clements, Acting
Instructional Resources Center	Worth McDougald
Office of Computing Activities	James L. Carmon
Office of General Research	Charles H. Douglas
Public Safety Division	Edward T. Kassinger
University of Georgia Botanical Garden	Francis E. Johnston, Jr.
University of Georgia Libraries	Warren N. Boes
University of Georgia Press	Ralph H. Stephens
University of Georgia Research Park	William O. Burke
Veterinary Medicine Experiment Station	John M. Bowen

UNIVERSITY COUNCIL STANDING COMMITTEES

<i>Committee</i>	<i>Chairperson</i>
University Council, Executive Committee	C. Ronald Ellington
Educational Affairs Committee	William L. Hays*
Curriculum Committee	William L. Hays*
Admissions Committee	Marion H. Montgomery
Library and Instructional Aids Committee	Rayburn S. Moore
Faculty Affairs	A. E. Patterson
Committee on Student Affairs	Editha B. Mills
Committee on Facilities	Nicholas A. Beadles
Committee on Intercollegiate Athletics	J. Reid Parker

* Resigned effective 1-1-77

ADMISSIONS

**NEW FRESHMEN
FALL 1960-1976**

<i>Fall Quarter</i>	<i>Applied</i>	<i>Admitted</i>	<i>% of Applied Admitted</i>	<i>Enrolled</i>	<i>% of Applied Enrolled</i>	<i>% of Admitted Enrolled</i>
1960	2,593	2,192	85%	1,546	60%	71%
1961	2,835	2,220	78	1,745	62	79
1962	3,094	2,495	81	1,917	62	77
1963	3,567	2,830	79	2,084	58	74
1964	3,981	3,246	82	2,285	57	70
1965	4,685	3,873	83	2,536	54	65
1966	5,150	4,013	78	2,512	49	63
1967	5,207	3,691	71	2,482*	48	67
1968	5,672	4,416	78	2,677*	47	61
1969	5,484	4,159	76	2,456*	45	59
1970	5,600	4,291	77	2,486	44	58
1971	5,176	3,923	76	2,265	44	58
1972	5,442	4,211	77	2,502**	46	59
1973	5,141	3,925	76	2,349	46	60
1974	5,323	4,493	84	2,754	52	61
1975	5,191	4,183	81	2,499	48	60
1976	5,590	4,292	77	2,530***	45	59

* Does not include Summer—approximately 200 enrolled each summer

** Does not include 51 irregular students

*** Does not include 151 new students in Special Studies

Source: Admissions Office

**HIGH SCHOOLS FROM WHICH TEN OR MORE STUDENTS
ENTERED AS FRESHMEN
FALL 1976**

Clarke Central, Athens	74	Crestwood, Atlanta	16
Cedar Shoals, Athens	70	Edmund Burke Academy, Waynesboro	16
Dunwoody, Dunwoody	57	Glynn Academy, Brunswick	16
La keside, Atlanta	56	Marist, Atlanta	16
Peachtree, Chamblee	49	Savannah Country Day, Savannah	15
Ridgeview, Atlanta	46	Hart County, Hartwell	14
St. Pius, Atlanta	44	Calhoun, Calhoun	13
Briarcliff, Atlanta	43	Oconee County, Watkinsville	13
Henderson, Chamblee	43	Richmond Academy, Augusta	13
Northside, Atlanta	42	Stephens County, Toccoa	13
Wheeler, Marietta	41	Warner Robins, Warner Robins	13
Riverwood, Atlanta	35	Dalton, Dalton	12
Chamblee, Chamblee	32	Griffin, Griffin	12
North Springs, Atlanta	32	Johnson, Gainesville	12
Lovett, Atlanta	29	Avondale, Avondale Estates	11
Stratford, Macon	28	Cross Keys, Atlanta	11
Tucker, Tucker	27	First Presbyterian Day, Macon	11
Westminister, Atlanta	26	Jonesboro, Jonesboro	11
Campbell, Smyrna	23	Madison County, Danielsville	11
Clarkston, Clarkston	21	Northeast Macon, Macon	11
Darlington, Rome	21	Roswell, Roswell	11
SW DeKalb, Decatur	21	South Gwinnett, Snellville	11
Hardaway, Columbus	20	Towers, Decatur	11
Berkmar, Lilburn	20	Columbia, Decatur	10
North Fulton, Atlanta	18	Newnan, Newnan	10
Sprayberry, Marietta	18	Northside, Warner Robins	10
Athens Academy, Athens	17	Rockdale County, Conyers	10
Druid Hills, Atlanta	17	St. Vincents, Savannah	10
Westside, Augusta	17	Thomasville, Thomasville	10
Woodward, College Park	17	Thomson, Thomson	10
		Wills, Smyrna	10

Total schools, ten or more students (61 schools)	1,377
Total from other high schools in State (273 schools)	787
Total In-State (334 schools)	2,164

Total from high schools out of State (378 schools)	517
--	-----

Total new Freshmen (712 schools)	2,681*
----------------------------------	--------

*Figures include 151 new students enrolled in Special Studies

Source: Admissions Office

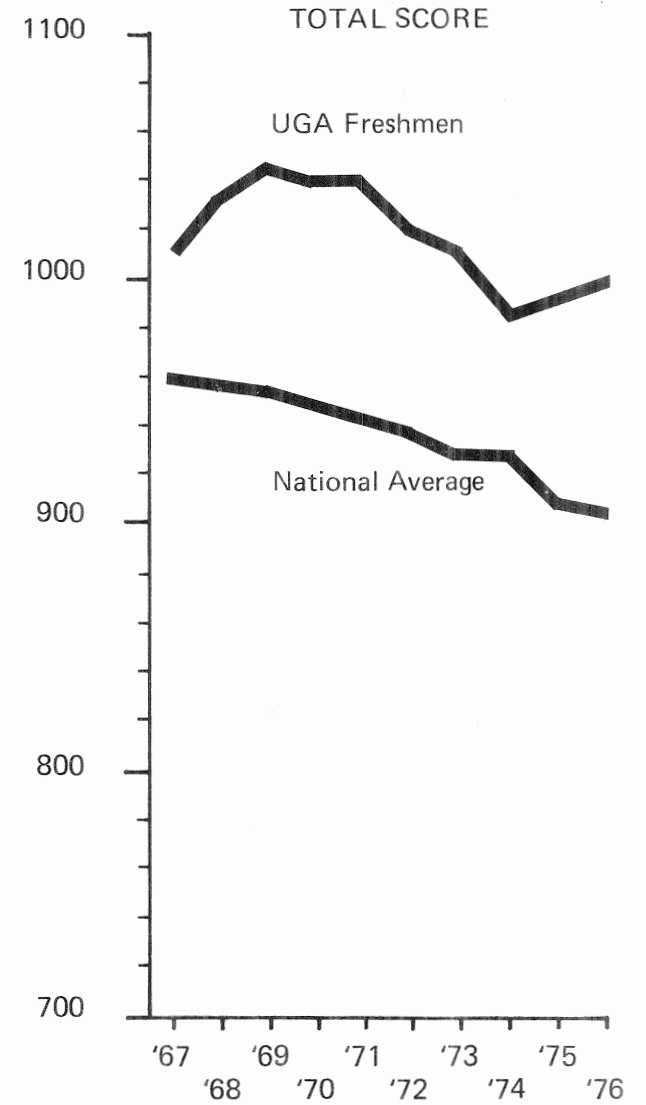
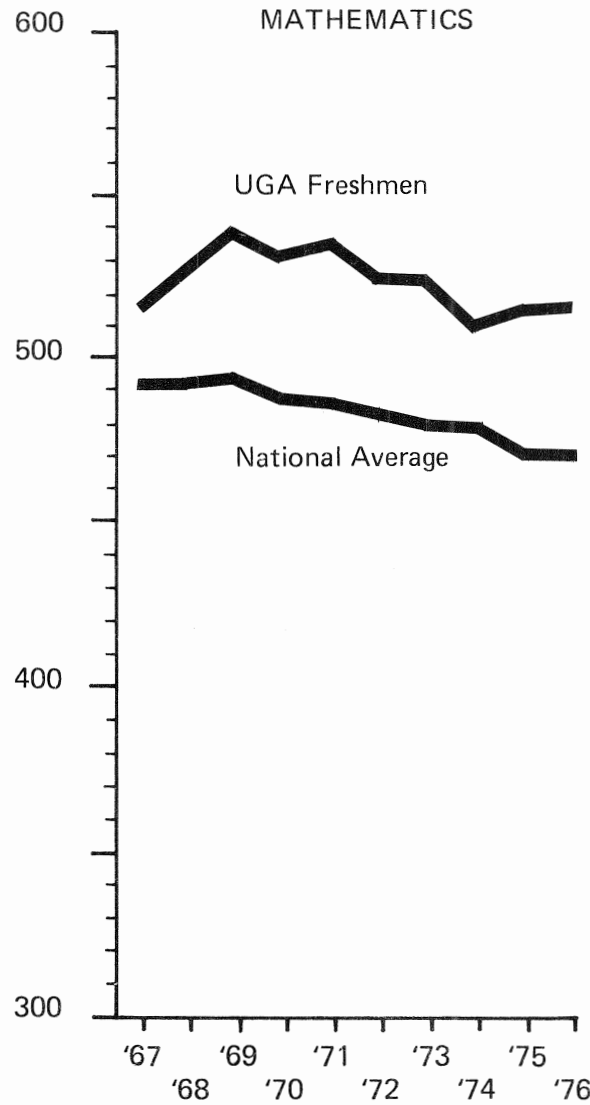
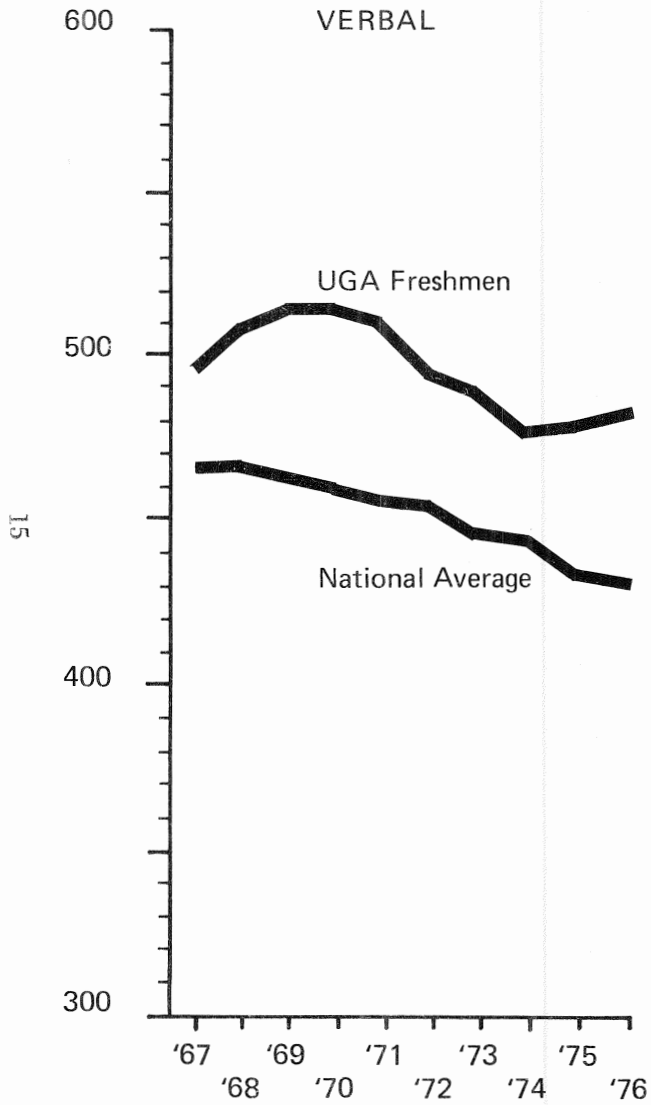
MEAN COLLEGE SCHOLASTIC APTITUDE TEST SCORES
FOR FRESHMAN CLASSES FALL 1960-1976

	<i>Number of scores</i>	<i>Verbal Score</i>		<i>Mathematics Score</i>		<i>Total Score</i>	
		<i>UGA mean</i>	<i>Nat'l mean*</i>	<i>UGA mean</i>	<i>Nat'l mean*</i>	<i>UGA mean</i>	<i>Nat'l mean*</i>
1960	1,546	422	477	438	498	860	975
1961	1,745	439	474	451	495	890	969
1962	1,865	452	473	472	498	924	971
1963	1,930	462	478	483	502	945	980
1964	2,285	467	475	486	498	953	973
1965	2,536	479	473	498	496	977	969
1966	2,512	500	471	520	496	1,020	967
1967	2,482	495	466	517	492	1,012	958
1968	2,677	504	466	528	492	1,032	958
1969	2,455	507	463	539	493	1,046	956
1970	2,470	507	460	531	488	1,038	948
1971	2,265	505	455	534	488	1,039	943
1972	2,502	493	453	526	484	1,019	937
1973	2,349	487	445	525	481	1,012	926
1974	2,741	477	444	509	480	986	924
1975	2,499	478	434	516	472	994	906
1976	2,530	481	431	518	472	999	903

* National mean of all candidates, 1960-1966; National mean of all college bound, 1967-1976.

Source: Admissions Office

Figure 2
 SAT SCORES FOR ENTERING FRESHMEN*
 Fall Quarter 1967-1976



*Data from page 14

**GRADE POINT AVERAGES FOR TRANSFER STUDENTS
FALL 1976**

<i>Student Average</i>	<i>Male Students</i>	<i>Male Pct</i>	<i>Female Students</i>	<i>Female Pct</i>	<i>Total Students*</i>	<i>Total Pct</i>
3.00 + Over	326		399		724	
Subtotal (3.0 + Over)	326	28.7%	399	37.9%	724	33.1%
2.90 - 2.99	28		29		57	
2.80 - 2.89	60		53		113	
2.70 - 2.89	61		64		125	
2.60 - 2.69	67		78		145	
2.50 - 2.59	86		79		165	
Subtotal (2.5 - 2.99)	302	26.6%	303	28.8%	605	27.7%
2.40 - 2.49	52		43		95	
2.30 - 2.39	62		51		113	
2.20 - 2.29	50		48		98	
2.10 - 2.19	51		31		82	
2.00 - 2.09	72		27		99	
Subtotal (2.0 - 2.49)	287	25.3%	200	19.0%	487	22.3%
Below 2.00	14		5		19	
Subtotal (Below 2.0)	14	1.2%	5	0.5%	19	0.9%
TOTAL (with averages)	928	81.8%	907	86.2%	1,835	84.0%
No Averages	206	18.2%	145	13.8%	351	16.0%
Grand Total	1,135	100%	1,052	100%	2,187	100%

*Includes irregulars, transient, and professional school students.

Source: Admissions Office

**GEORGIA COLLEGES AND UNIVERSITIES FROM WHICH STUDENTS TRANSFERRED
TO THE UNIVERSITY OF GEORGIA *
FALL 1976**

<i>College Transferred From</i>	<i>Male</i>	<i>Female</i>	<i>Total</i>
ABAC, Tifton	67	32	99
Agnes Scott College, Decatur	0	5	5
Armstrong State, Savannah	22	13	35
Albany Junior College, Albany	22	18	40
Berry College, Mount Berry	7	11	18
Brenau College, Gainesville	1	10	11
Brewton Parker College, Mount Vernon	4	3	7
Birdwood Jr. College, Thomasville	1	0	1
Brunswick Jr. College, Brunswick	21	12	33
Columbus College, Columbus	24	16	40
Clayton Jr. College, Morrow	18	17	35
DeKalb Junior College, Clarkston	62	71	133
Dalton Jr. College, Dalton	15	18	33
Emmanuel College, Franklin Springs	14	11	25
Oxford College, Oxford	9	8	17
Emory University, Atlanta	14	12	26
Ft. Valley State, Fort Valley	3	0	3
Floyd Jr. College, Rome	12	16	28
Georgia Tech, Atlanta	15	6	21
Georgia Military College, Milledgeville	3	0	3
Georgia Southwestern, Americus	12	4	16
Georgia State University, Atlanta	41	35	76
Georgia College, Milledgeville	10	11	21
Georgia Southern College, Statesboro	30	31	61
Gainesville Jr. College, Gainesville	22	21	43
Augusta College, Augusta	21	14	35
Kennesaw Jr. College, Marietta	36	26	62
LaGrange College, LaGrange	4	2	6
Mercer University, Macon	16	8	24
Middle Georgia College, Cochran	52	32	84
Morris Brown College, Atlanta	0	1	1
Macon Jr. College, Macon	9	11	20
North Georgia College, Dahlonega	3	15	18
Paine College, Augusta	0	1	1
Piedmont College, Demorest	2	0	2
Reinhardt College, Waleska	2	2	4
Savannah State College, Savannah	2	0	2
Shorter College, Rome	3	5	8
South Georgia College, Douglas	14	4	18
Southern Tech, Atlanta	4	0	4
Tift College, Forsyth	0	3	3
Truett McConnell College, Cleveland	8	6	14
UGA Cont. Ed., Athens	4	12	16
Valdosta State College, Valdosta	25	16	41
Wesleyan College, Macon	0	9	9
West Georgia College, Carrollton	28	21	49
Young Harris College, Young Harris	29	37	66
Total In-State Transfer Students (48 colleges)	711	606	1,317
Total Out-of-State Transfer Students (335 colleges)	424	446	870
Grand Total Transfer Students (383 colleges)	1,135	1,052	2,187*

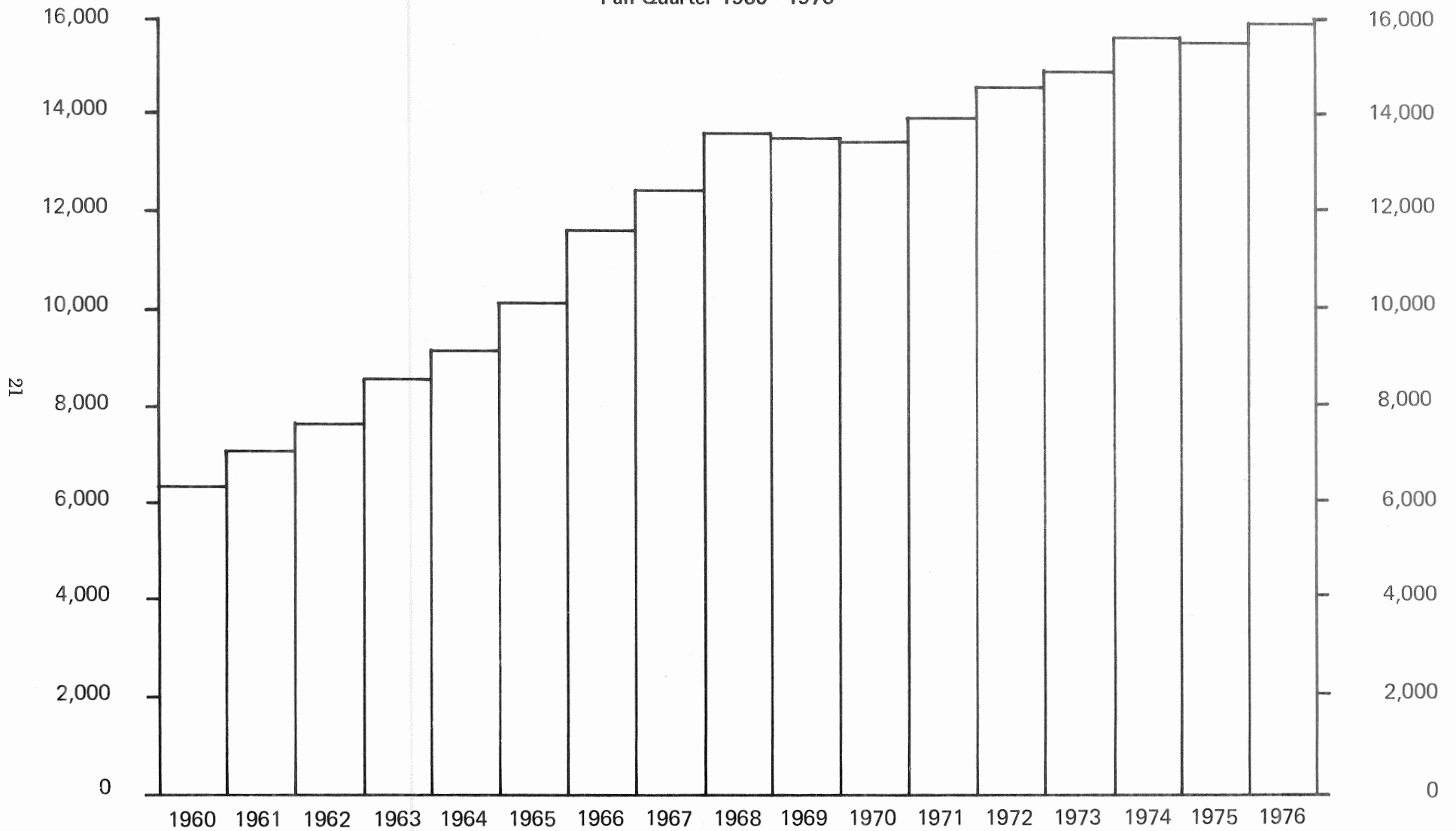
* Includes transients, irregulars, and professionals.

ENROLLMENT

**FALL QUARTER ENROLLMENT BY LEVEL BY SEX
1960 - 1976**

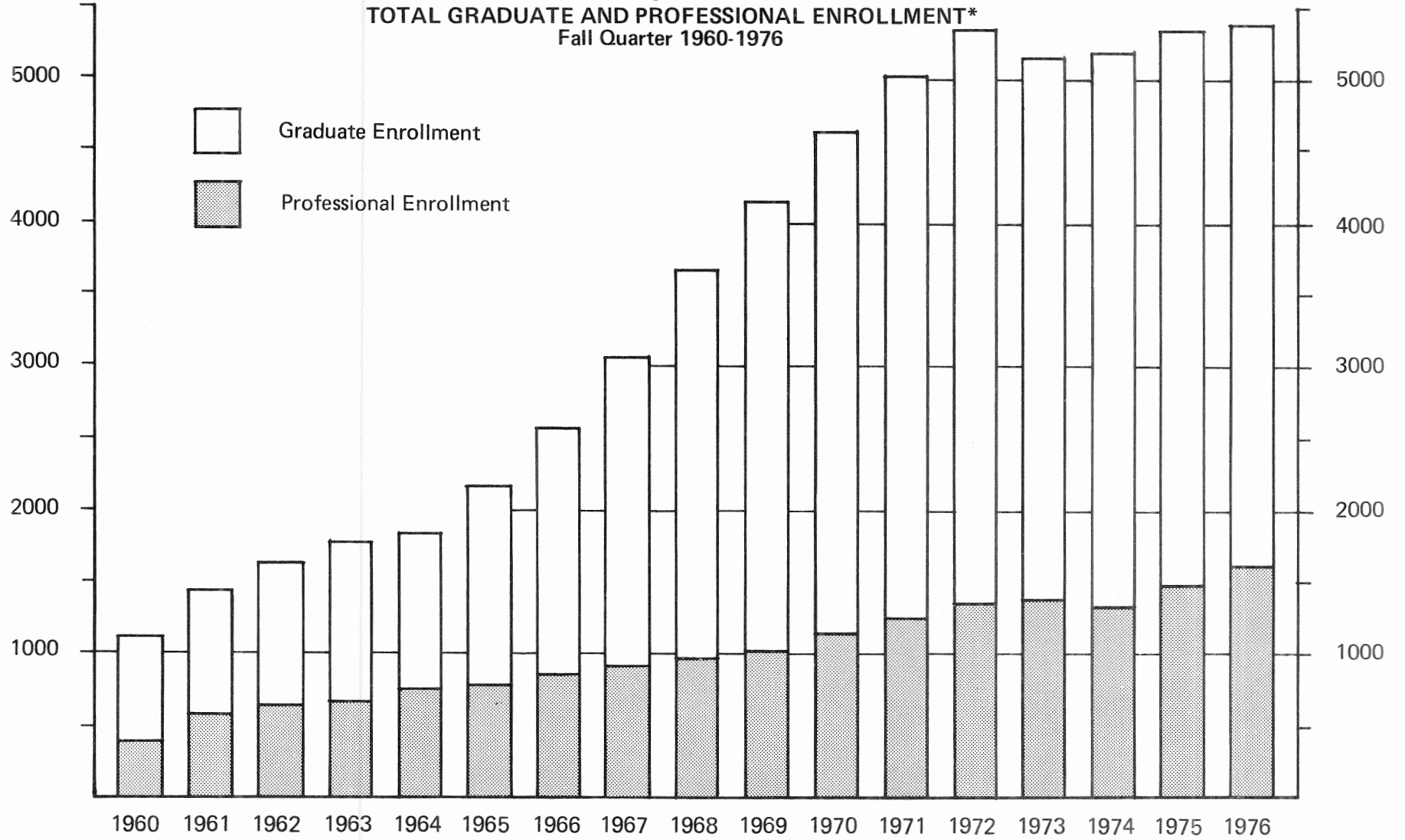
	1960	1961	1962	1963	1964	1965	1966	1967	1968	1969	1970	1971	1972	1973	1974	1975	1976
Freshman																	
Male	1,031	1,100	1,122	1,166	1,255	1,422	1,535	1,403	1,640	1,539	1,664	1,606	1,757	1,713	1,933	1,846	1,852
Female	758	898	940	1,045	1,215	1,281	1,271	1,311	1,677	1,461	1,574	1,478	1,606	1,580	1,903	1,759	1,827
Total	1,789	1,998	2,062	2,211	2,470	2,703	2,806	2,714	3,317	3,000	3,238	3,084	3,363	3,293	3,836	3,605	3,679
Sophomore																	
Male	927	1,078	1,108	1,166	1,051	1,292	1,534	1,356	1,535	1,437	1,334	1,561	1,571	1,648	1,779	1,766	1,740
Female	549	714	772	892	806	1,101	1,338	1,217	1,316	1,391	1,312	1,433	1,538	1,603	1,659	1,779	1,738
Total	1,476	1,792	1,880	2,058	1,857	2,393	2,872	2,573	2,851	2,828	2,646	2,994	3,109	3,251	3,438	3,545	3,478
Junior																	
Male	1,090	1,123	1,241	1,449	1,538	1,486	1,997	2,076	2,384	2,273	2,114	2,239	2,428	2,300	2,443	2,259	2,197
Female	483	611	746	853	901	897	1,305	1,462	1,550	1,571	1,652	1,733	1,880	1,914	2,006	1,891	1,913
Total	1,573	1,734	1,987	2,302	2,439	2,383	3,302	3,538	3,934	3,844	3,766	3,972	4,308	4,214	4,449	4,150	4,110
Senior																	
Male	1,024	1,026	1,124	1,317	1,502	1,705	1,767	2,197	2,240	2,352	2,308	2,248	2,233	2,310	2,158	2,305	2,294
Female	408	462	558	715	819	923	939	1,333	1,405	1,457	1,482	1,628	1,584	1,790	1,804	1,971	1,877
Total	1,432	1,488	1,682	2,032	2,321	2,628	2,706	3,530	3,645	3,809	3,790	3,876	3,817	4,100	3,962	4,276	4,171
Special Studies	Established 1976																
Male																	109
Female																	59
Total																	168
Irregular & Transient																	
Male	95	130	124	103	109	143	133	117	131	136	153	177	217	200	234	304	201
Female	59	49	61	51	54	62	60	71	87	82	62	95	112	100	132	213	164
Total	154	179	185	154	163	205	193	188	218	218	215	272	329	300	366	517	365
Graduate																	
Male	488	586	673	797	811	1,028	1,257	1,562	1,905	2,199	2,363	2,501	2,521	2,332	2,262	2,254	2,079
Female	234	287	317	336	290	369	468	595	813	983	1,126	1,290	1,470	1,447	1,586	1,611	1,609
Total	722	873	990	1,133	1,101	1,397	1,725	2,157	2,718	3,182	3,489	3,791	3,991	3,779	3,848	3,865	3,688

Figure 3
TOTAL UNDERGRADUATE ENROLLMENT*
Fall Quarter 1960 - 1976



*Data from page 20

Figure 4
TOTAL GRADUATE AND PROFESSIONAL ENROLLMENT*
Fall Quarter 1960-1976



*Data from pages 20 and 23

CONT'D: FALL QUARTER ENROLLMENT BY LEVEL BY SEX: 1960-1976

	1960	1961	1962	1963	1964	1965	1966	1967	1968	1969	1970	1971	1972	1973	1974	1975	1976
Professional																	
Male	381	561	617	645	709	721	804	854	897	931	1,056	1,125	1,202	1,138	1,046	1,108	1,117
Female	11	22	18	17	34	44	52	59	72	76	86	118	165	243	288	376	462
Total	392*	583*	635*	662*	743*	765*	856*	913*	969*	1,007*	1,142*	1,243*	1,367*	1,381**	1,334**	1,484**	1,579***
Total University Enrollment																	
Male	5,036	5,604	6,009	6,643	6,975	7,797	9,027	9,565	10,732	10,867	10,992	11,457	11,929	11,641	11,855	11,842	11,589
Female	2,502	3,043	3,412	3,909	4,119	4,677	5,433	6,048	6,920	7,021	7,294	7,775	8,355	8,677	9,378	9,600	9,649
Total	7,538	8,647	9,421	10,552	11,094	12,474	14,460	15,613	17,652	17,888	18,286	19,232	20,284	20,318	21,233	21,442	21,238

23

* Includes Pharmacy, Law, Veterinary Medicine

** Includes Forestry, Law, Pharmacy, Veterinary Medicine

*** Includes Forestry, Law, Pharmacy, Social Work, and Veterinary Medicine

Source: Registrar's Reports

**COLLEGE ENROLLMENT BY QUARTER
FY 1965-66 - 1976-77**

1965-66 1966-67 1967-68 1968-69 1969-70 1970-71 1971-72 1972-73 1973-74 1974-75 1975-76 1976-77

AGRICULTURE

Summer	276	280	337	332	313	210	212	192	227	304	406	410
Fall	803	889	904	857	679	657	730	726	752	938	1,117	1,320
Winter	704	914	939	904	636	675	736	760	802	1,015	1,211	
Spring	865	910	909	883	659	663	686	746	798	1,013	1,176	

ARTS & SCIENCES

Summer	1,728	1,794	1,796	1,914	2,072	1,973	2,032	2,014	2,021	2,151	2,181	1,869
Fall	4,658	5,230	5,282	5,921	5,680	5,884	6,348	6,809	7,014	7,235	7,136	7,278
Winter	4,893	4,979	5,206	5,554	5,511	5,616	6,088	6,427	6,652	6,752	6,754	
Spring	4,474	4,719	4,911	5,327	5,096	5,313	5,617	5,901	5,981	6,083	6,126	

BUSINESS ADMINISTRATION

Summer	880	954	1,053	1,133	1,313	1,291	1,129	977	985	1,093	1,172	972
Fall	2,091	2,389	2,486	2,803	2,767	2,670	2,609	2,725	2,846	3,232	3,253	3,086
Winter	2,257	2,497	2,662	3,011	3,081	2,821	2,718	2,740	2,911	3,264	3,140	
Spring	2,207	2,461	2,637	2,873	3,062	2,698	2,679	2,725	2,884	3,212	3,014	

EDUCATION

Summer	1,397	1,288	1,505	1,552	1,420	1,333	1,358	1,269	1,189	1,092	1,085	926
Fall	1,633	1,943	2,285	2,657	2,728	2,658	2,705	2,596	2,545	2,467	2,341	2,148
Winter	1,655	1,981	2,332	2,652	2,652	2,708	2,663	2,535	2,426	2,344	2,284	
Spring	1,681	1,984	2,329	2,591	2,678	2,601	2,569	2,510	2,357	2,250	2,209	

ENVIRONMENTAL DESIGN

Summer	-	-	-	-	-	43	36	45	63	89	100	83
Fall	-	-	-	-	137	151	167	201	240	284	247	213
Winter	-	-	-	-	140	145	173	201	244	263	242	
Spring	-	-	-	-	145	146	168	193	250	270	230	

Cont'd: COLLEGE ENROLLMENT BY QUARTER: FY 1965-66 - 1976-77

1965-66 1966-67 1967-68 1968-69 1969-70 1970-71 1971-72 1972-73 1973-74 1974-75 1975-76 1976-77

FOREST RESOURCES

Summer	50	59	95	107	129	134	131	108	120	79	23	24
Fall	211	288	343	341	364	328	284	261	193	61	101	130
Winter	228	276	314	347	360	327	306	248	169	102	123	
Spring	217	277	310	344	322	316	299	235	165	93	121	

HOME ECONOMICS

Summer	155	166	167	192	200	198	200	220	233	253	278	255
Fall	350	397	393	470	487	487	526	579	604	691	724	685
Winter	328	399	399	443	497	490	525	588	607	709	698	
Spring	338	371	393	426	497	454	543	579	627	679	704	

JOURNALISM

Summer	187	235	318	326	325	285	304	287	355	371	420	334
Fall	562	733	850	890	840	807	822	929	979	1,168	1,270	1,021
Winter	586	769	855	895	895	816	881	949	983	1,217	1,242	
Spring	601	775	822	813	842	777	884	918	1,006	1,218	1,192	

LAW

Summer	48	57	50	92	111	162	158	186	190	209	203	192
Fall	203	246	283	326	401	499	567	648	651	658	634	606
Winter	181	231	264	280	375	445	521	587	580	586	587	
Spring	172	210	247	267	359	422	506	566	555	576	542	

PHARMACY

Summer	174	206	186	208	214	179	219	228	221	236	208	228
Fall	348	400	395	421	378	409	419	451	436	351	432	446
Winter	382	410	405	423	383	416	429	446	424	402	445	
Spring	390	421	424	436	396	425	442	438	416	379	392	

Cont'd: COLLEGE ENROLLMENT BY QUARTER: FY 1965-66 - 1976-77

1965-66 1966-67 1967-68 1968-69 1969-70 1970-71 1971-72 1972-73 1973-74 1974-75 1975-76 1976-77

VETERINARY MEDICINE

Summer	53	48	53	58	57	59	60	75	97	75	75	74
Fall	218	220	235	248	245	247	264	368	279	300	322	333
Winter	213	221	230	240	244	248	263	379	279	299	311	
Spring	210	220	228	238	242	247	269	368	284	299	311	

SOCIAL WORK

Summer	-	-	-	-	-	-	-	-	-	-	-	39
Fall	-	-	-	-	-	-	-	-	-	-	-	116
Winter	-	-	-	-	-	-	-	-	-	-	66	
Spring	-	-	-	-	-	-	-	-	-	-	95	

SPECIAL STUDIES

Summer	-	-	-	-	-	-	-	-	-	-	-	8
Fall	-	-	-	-	-	-	-	-	-	-	-	168
Winter	-	-	-	-	-	-	-	-	-	-	29	
Spring	-	-	-	-	-	-	-	-	-	-	16	

GRADUATE SCHOOL

Summer	2,234	2,580	2,809	3,422	3,516	3,986	4,383	4,764	4,782	4,311	4,300	3,597
Fall	1,397	1,725	2,157	2,718	3,182	3,489	3,791	3,991	3,779	3,848	3,865	3,688
Winter	1,320	1,631	2,104	2,472	2,988	3,488	3,727	3,979	3,593	3,782	3,783	
Spring	1,361	1,630	2,152	2,537	2,873	3,498	3,760	3,879	3,633	3,818	3,722	

TOTAL UNIVERSITY

Summer	7,182	7,667	8,369	9,336	9,670	9,853	10,222	10,365	10,483	10,263	10,451	9,011
Fall	12,474	14,460	15,613	17,652	17,888	18,286	19,232	20,284	20,318	21,233	21,442	21,238
Winter	12,747	14,308	15,710	17,221	17,762	18,195	19,030	19,839	19,670	20,555	20,915	
Spring	12,516	13,978	15,362	16,735	17,171	17,560	18,422	19,058	18,956	19,890	19,850	

Source: Registrar's Reports

CUMULATIVE RESIDENT AND NON-RESIDENT CAMPUS ENROLLMENT *
1960-1976

<i>Year</i>	<i>Georgia Students</i>	<i>Out-of-State Students</i>	<i>Foreign Students</i>	<i>Total Students</i>
1960-61	7,153	1,201	99	8,453
1961-62	8,181	1,503	125	9,809
1962-63	9,042	1,879	129	11,050
1963-64	10,062	2,128	140	12,330
1964-65	10,404	2,407	124	12,935
1965-66	11,483	2,779	144	14,406
1966-67	12,636	3,389	183	16,208
1967-68	14,643	3,708	130	18,481
1968-69	15,643	3,878	278	19,799
1969-70	16,774	4,025	394	21,193
1970-71	15,881	3,685	453	20,019
1971-72	17,228	3,430	443	21,101
1972-73	19,290	3,595	478	23,363
1973-74	19,205	3,389	492	23,086
1974-75	20,247	3,398	502	24,147
1975-76	20,674	3,286	510	24,470

*Unduplicated count of registrants Fall, Winter, and Spring quarters.

Source: Registrar's Reports

CUMULATIVE CAMPUS ENROLLMENT BY STATE *

	<i>1974-75</i>	<i>1975-76</i>		<i>1974-75</i>	<i>1975-76</i>
Alabama	147	141	Montana	1	1
Alaska	2	4	Nebraska	5	4
Arizona	6	9	Nevada	1	3
Arkansas	9	14	New Hampshire	6	2
California	49	44	New Jersey	125	122
Colorado	10	11	New Mexico	3	4
Connecticut	51	52	New York	273	276
Delaware	20	21	North Carolina	342	313
Dist. of Columbia	15	13	North Dakota	4	4
Florida	434	391	Ohio	91	84
Georgia	20,247	20,674	Oklahoma	7	11
Hawaii	10	3	Oregon	4	5
Idaho	3	3	Pennsylvania	105	103
Illinois	74	73	Rhode Island	7	4
Indiana	36	41	South Carolina	506	509
Iowa	10	8	South Dakota	1	5
Kansas	10	9	Tennessee	153	159
Kentucky	52	47	Texas	54	48
Louisiana	46	56	Utah	7	5
Maine	8	7	Vermont	3	2
Maryland	135	142	Virginia	361	327
Massachusetts	32	40	Washington	10	8
Michigan	49	44	West Virginia	29	31
Minnesota	10	11	Wisconsin	15	11
Mississippi	43	34	Wyoming	2	3
Missouri	22	24	Subtotal	23,645	23,960
			Foreign Students	502	510
			TOTAL	24,147	24,470

*Unduplicated count of registrants Fall, Winter, and Spring quarters.

Source: Registrar's Reports

FOREIGN STUDENTS AND EXCHANGE VISITORS BY COUNTRY
FALL 1976

	<i>Grad/ Prof</i>	<i>Under- grad</i>	<i>Total</i>		<i>Grad/ Prof</i>	<i>Under- grad</i>	<i>Total</i>
Australia	5	0	5	Kenya	1	0	1
Bangladesh	1	0	1	Korea	25	1	26
Bolivia	1	0	1	Lebanon	2	0	2
Brazil	6	0	6	Liberia	1	0	1
Cambodia	2	1	3	Malaysia	1	0	1
Canada	7	1	8	Mexico	2	0	2
Chile	4	0	4	Morocco	1	0	1
China (Republic of)	75	2	77	Nicaragua	0	1	1
Columbia	6	6	12	Nigeria	2	5	7
Cuba	1	0	1	Norway	1	3	4
Denmark	3	0	3	Pakistan	1	0	1
Egypt	11	0	11	Peru	3	1	4
England	10	3	13	Philippines	4	2	6
Finland	0	1	1	Poland	1	0	1
France	3	4	7	Rhodesia	2	2	4
Gambia	0	1	1	Saudi Arabia	0	3	3
Ghana	1	2	3	Sierra Leone	0	1	1
Germany	3	3	6	South Africa	2	0	2
Greece	3	0	3	Spain	2	0	2
Guatemala	1	0	1	Sweden	4	0	4
Guyana	0	1	1	Switzerland	2	0	2
Holland	9	0	9	Syria	2	0	2
Hong Kong	12	8	20	Thailand	14	5	19
Iceland	1	0	1	Trinidad	1	0	1
India	45	3	48	Turkey	5	1	6
Indonesia	1	1	2	United Arab Emirates	0	4	4
Iran	15	8	23	Venezuela	10	0	10
Iraq	0	1	1	Vietnam	2	1	3
Israel	3	0	3	Virgin Islands	1	0	1
Jamaica	2	2	4	Other African	1	0	1
Japan	15	1	16				
				Total	339	79	418

Source: Office of International Services and Programs

DEGREES CONFERRED

DEGREE MAJORS: 1976

*Major/Area of Concentration
Degree(s)*

Accounting BBA	Art AB BFA MFA PHD
Administration in Special Education EDS	Art & Home Economics BFA
Adult Education MED EDS EDD	Art Education BSED MAED MED EDS EDD
Advertising ABJ	Art History MA
Agricultural Economics BSA MS PHD	Art Education/Crafts, Drawing & Painting Graphic Design, Interior Design, Photographic Design, Print Making, Sculpture BFA
Agricultural Education BSA MED EDS	Art/Art History AB
Agricultural Engineering BSAE MS	Audiology Education MED
Agricultural Extension BSA MAEXT	Avian Medicine MAM
Agricultural Journalism BSA	Banking & Finance BBA
Agricultural Mechanization Technology BSA	Biochemistry BS BSA MS PHD
Agronomy BSA MS PHD	Biochemistry/Pre-Dentistry, Pre-Medicine, Pre-Veterinary Medicine BS
Agronomy/General Agriculture, Pre-Veterinary Medicine BSA	Biological Science BSA
Anatomy MS	Biology/Pre-Dentistry, Pre-Medicine, Pre-Veterinary Medicine BS
Animal Nutrition PHD	Botany BS BSA MS PHD
Animal Science BSA MS PHD	Broadcast News ABJ
Animal Science/General Agriculture, Pre-Veterinary Medicine BSA	Business Administration & Industrial Geography BBA
Anthropology AB MA PHD	Business Administration MA MBA PHD
Area Studies AB ABJ	

Cont'd: DEGREE MAJORS: 1976

Business Education BSED MED EDS EDD	Dairy Science/Manufacturing, Production, Sanitary Science, General Agriculture, Pre-Veterinary Medicine BSA
Business Education/Bookkeeping & Business Management, Comprehensive BSED	Dance Education BSEd
Business Systems BBA	Dietetics & Institution Management BSHE
Chemistry AB BSA BSCEM MS PHD	Distributive Education BSED MED EDS
Chemistry/Pre-Dentistry, Pre-Medicine, Pre-Veterinary Medicine BS	Drama PHD
Child & Family Development BSHE MHE MS PHD	Drama & Theatre/Television Drama BFA
Child Development/Early Childhood Education, Mental Retardation BSHE	Drama & Theatre AB BFA MA MFA
Church Music BMUS	Drama/TV BFA
Classics AB MA	Early Childhood Education BSED BSHE MED EDS EDD
Clothing & Textiles BSHE MHE MS	Ecology PHD
Community Nutrition BSHE	Economics AB BBA MA PHD
Comparative Literature AB MA PHD	Education MA
Computer Science AB BS	Education of Exceptional Children EDD PHD
Consumer Economics & Family Management BSHE	Education of Gifted EDD
Cooperative Vocational Education MED	Educational Administration MED EDS EDD
Counseling & Student Personnel Services EDS EDD PHD	Educational Measurements EDD
Criminal Justice AB	Educational Media MED EDS
Curriculum & Instruction MED EDS EDD	Educational Philosophy MED EDD
Dairy Science BSA MS	Educational Psychology BSED MED EDS EDD PHD

Cont'd: DEGREE MAJORS: 1976

Elementary Education
BSED MED EDS EDD

Emotionally Disturbed Children
MED EDS

English
AB MA MAT PHD

English Education
BSED MED EDS

Entomology
BS BSA MS PHD

Environmental Health
BSEH

Exceptional Children
EDD

Experimental Foods
BSHE

Family Development
BSHE

Fashion Merchandising
BSHE

Film
ABJ

Finance
BBA

Fish & Wildlife Biology
BSFR

Food Science
BSA MS

Food Science & Dairy Manufacturing
PHD

Food Service Management
BSHE

Foods & Nutrition
MHE MS

Foreign Language Education
BSED MED EDS

Forest Resources
MFR MS PHD

Forest Resources Planning & Administration
BSFR

Forest Water Resources
BSFR

Forestry Sciences
BSFR

French
AB MA MAT

Furnishings & Interiors
BSHE

General Agriculture
BSA

General Business
BBA

General Radio-TV-Film
ABJ

Geographic Education
EDD

Geography
AB BS MA PHD

Geology
AB BS MS PHD

German
AB MA MAT

Germanic & Slavic Languages
AB

Greek
AB

Guidance & Counseling
MED EDS

Health & Physical Education
BSED

Health Education
BSED MED

Health Occupation Education
BSED MED

Higher Education
EDD

History
AB MA MAT PHD

Home Economics
MHE MS

Cont'd: DEGREE MAJORS: 1976

Home Economics & Interior Design
BSHE

Home Economics & Journalism
BSHE

Home Economics Education
BSHE MED EDS

Horticulture
BSA MS

Housing
BSHE

Housing, Furnishings & Management
MHE MS

Industrial Arts Education
BSED MED EDS

Industrial Relations
BBA

Interdisciplinary Studies
AB

International Business
BBA

Interrelated Program in Exceptional Children
MED

Journalism
MA

Junior High Grades
BSED

Landscape Architecture
BLA MLA

Landscape Operation
BSA

Language Education
EDD

Languages & Literature
AB

Latin
AB

Law
JD LLM

Learning Disorders
MED EDS

Library Education
MED EDS

Linguistics
MA PHD

Magazines
ABJ

Management
BBA

Management Sciences
BBA MBA PHD

Marketing
BBA

Mathematical Statistics
MA

Mathematics
AB BS MA PHD

Mathematics Education
BSED MED EDS EDD

Medical Microbiology
MS

Medical Technology
BS

Mental Retardation
BSED MED EDS

Microbiology
AB BS BSA MS PHD

Microbiology/Pre-Dentistry, Pre-Medicine,
Pre-Veterinary Medicine
BS

Middle School Grades 5-8
BSED

Multiple Handicapped
BSED MED EDS

Music
AB BFA MA MFA

Music Composition/Baritone, Bassoon, Cello,
Clarinet, Composition, Double Bass,
Electronic Music, Flute, French Horn,
Guitar, Harp, Harpsichord, Oboe, Organ,
Percussion, Piano, Saxophone, Trombone,
Trumpet, Tuba, Viola, Violin, Voice
BMUS

Cont'd: DEGREE MAJORS: 1976

Music Education
 BMUS MED MMED EDS EDD

Music Education/Baritone, Bassoon, Cello,
 Clarinet, Composition, Double Bass,
 Electronic Music, Flute, French Horn,
 Guitar, Harp, Harpsichord, Oboe,
 Organ, Percussion, Piano, Saxophone,
 Trombone, Trumpet, Tuba, Viola, Violin,
 Voice
 BMUS

Music Literature/Baritone, Bassoon, Cello,
 Clarinet, Composition, Double Bass,
 Electronic Music, Flute, French Horn,
 Guitar, Harp, Harpsichord, Oboe, Organ,
 Percussion, Piano, Saxophone, Trombone,
 Trumpet, Tuba, Viola, Violin, Voice
 BFA

Music Performance/Baritone, Bassoon, Cello,
 Clarinet, Composition, Double Bass,
 Electronic Music, Flute, French Horn,
 Guitar, Harp, Harpsichord, Oboe, Organ,
 Percussion, Piano, Saxophone, Trombone,
 Trumpet, Tuba, Viola, Violin, Voice
 BMUS

Music Theory/Baritone, Bassoon, Cello, Clarinet,
 Composition, Double Bass, Electronic Music,
 Flute, French Horn, Guitar, Harp, Harpsichord,
 Oboe, Organ, Percussion, Piano, Saxophone,
 Trombone, Trumpet, Tuba, Viola, Violin,
 Voice
 BFA

Music Therapy/Baritone, Bassoon, Cello, Clarinet,
 Composition, Double Bass, Electronic Music,
 Flute, French Horn, Guitar, Harp, Harpsichord,
 Oboe, Organ, Percussion, Piano, Saxophone,
 Trombone, Trumpet, Tuba, Viola, Violin, Voice
 BMUS

Newspapers
 ABJ

Nutrition Science
 BSHE

Organizational Management
 BBA

Park & Recreation Administration
 BSED MED EDS

Pharmacology
 MS PHD

Pharmacy
 BSPHR MS PHD

Philosophy
 AB MA PHD

Physical Education
 BSED MED EDS EDD

Physical Sciences
 BA BS

Physics
 AB BS BSPCS MS PHD

Physics & Astronomy
 AB BS

Physiology
 BS MS PHD

Plant Genetics
 BSA

Plant Pathology
 BSA

Plant Pathology & Plant Genetics
 BSA MS PHD

Plant Protection & Pest Management
 MPPPM

Plant Sciences
 PHD

Political Science
 AB MA PHD

Political Science & Philosophy
 AB

Poultry Science
 BSA MS PHD

Poultry Science/ General Agriculture,
 Pre-Veterinary Medicine
 BSA

Pre-Dentistry
 BS

Pre-Engineering
 BS

Pre-Forest Resources
 BS

Pre-Journalism
 AB

Pre-Law
 AB

Cont'd: DEGREE MAJORS: 1976

Pre-Medicine BS	Risk Management & Insurance BBA
Pre-Nursing BS	Romance Languages MA MAT PHD
Pre-Optometry BS	Safety Driver & Traffic Education MED
Pre-Pharmacy BS	School Psychology EDS EDD
Pre-Physical Therapy BS	School Psychometrist MED
Pre-Theology AB	School Social Services Education MED EDS
Pre-Veterinary Medicine BS BSA	Science Education BSED MED EDS EDD
Psychology AB BS MS PHD	Science Education/Biology, Chemistry, Earth Science, Physics BSED
Psychology/Pre-Dentistry, Pre-Medicine, Pre-Veterinary Medicine BS	Social Science Education BSED MED EDS EDD
Public Administration MPA DPA	Social Science Education/Economics, Geography, History, Political Science, Behavioral Science BSED
Public Relations ABJ	Social Sciences AB
Publication Management ABJ	Social Work BSW MSW
Radio ABJ	Sociology AB MA PHD
Reading Education MED EDS EDD PHD	Sociology Education EDD
Real Estate & Urban Development BBA	Spanish AB MA MAT
Recreation BSED MED EDS EDD	Speech Communication AB MA
Recreation Planning BLA	Speech Education BSED MED EDS
Rehabilitation Counseling MED EDS	Speech Pathology MED EDS EDD
Religion AB	Speech Pathology & Audiology BSED
Research Design EDD	

Cont'd: DEGREE MAJORS: 1976

Statistics

AB BS MS PHD

Student Personnel in Higher Education

MED EDS

Supervision

MED EDS EDD

Teacher Education

EDD

Television

ABJ

Timber Management & Utilization

BSFR

Trade & Industrial Education

BSED MED EDS

Veterinary Medicine

DVM

Veterinary Parasitology

MS PHD

Veterinary Pathology

MS PHD

Vocational Education

MED EDS EDD

Zoology

BS MS PHD

Zoology/Pre-Dentistry, Pre-Medicine,

Pre-Veterinary Medicine

BS

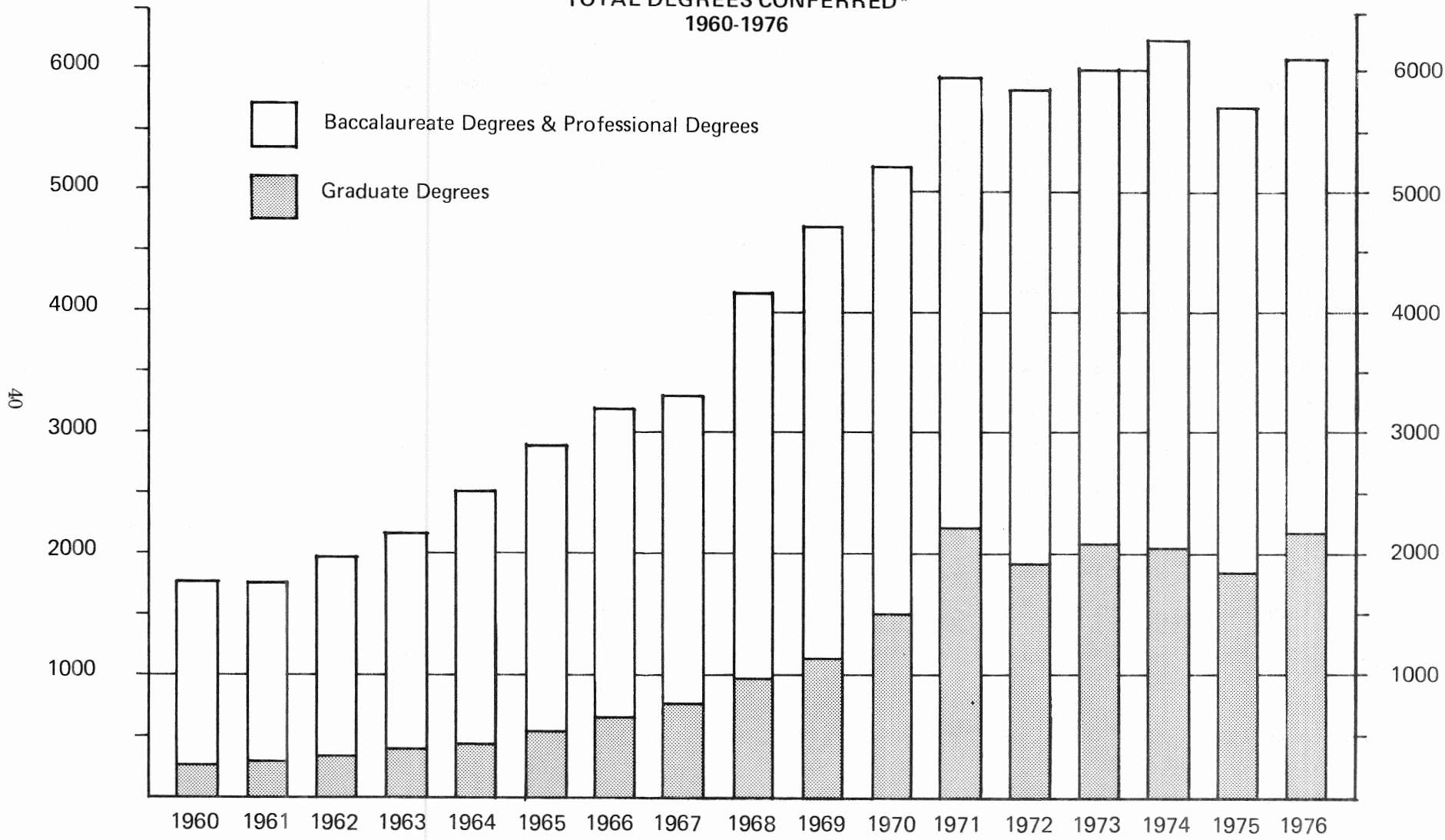
TOTAL DEGREES CONFERRED BY SCHOOL OR COLLEGE*

SCHOOL	1960	1961	1962	1963	1964	1965	1966	1967	1968	1969	1970	1971	1972	1973	1974	1975	1976
Agriculture	158	152	164	188	200	243	236	253	328	300	246	226	251	250	282	283	330
Arts & Sciences	314	330	367	480	584	723	809	730	884	1,037	1,023	1,023	1,040	1,046	1,187	1,048	1,105
Business Admin.	376	333	383	432	480	525	598	596	655	720	770	873	786	822	785	787	800
Education	289	259	314	306	360	403	436	466	668	786	855	849	968	876	848	764	731
Environmental Design											30	35	30	28	33	32	41
Forest Resources	81	96	101	77	56	65	59	58	62	94	124	107	99	72	122	38	33
Home Economics	78	71	75	76	90	88	78	74	119	111	130	114	167	165	198	192	210
Journalism	75	57	77	85	125	123	149	156	255	256	268	235	276	279	308	345	374
Social Work																	4
Law	40	42	47	43	63	74	51	61	56	83	84	109	137	189	210	200	217
Pharmacy	67	73	71	56	50	83	102	120	106	134	116	126	130	136	157	120	149
Vet. Medicine	63	56	58	43	57	62	51	48	52	57	61	59	57	60	67	64	75
Graduate	246	278	326	395	442	503	629	740	957	1,121	1,496	2,201	1,910	2,080	2,063	1,818	2,016
TOTAL	1,787	1,747	1,983	2,181	2,507	2,892	3,198	3,302	4,142	4,699	5,203	5,957	5,851	6,003	6,260	5,691	6,085

* The number of degrees conferred each year is determined by the sum of the August, December, March, and June graduates for the particular fiscal year.

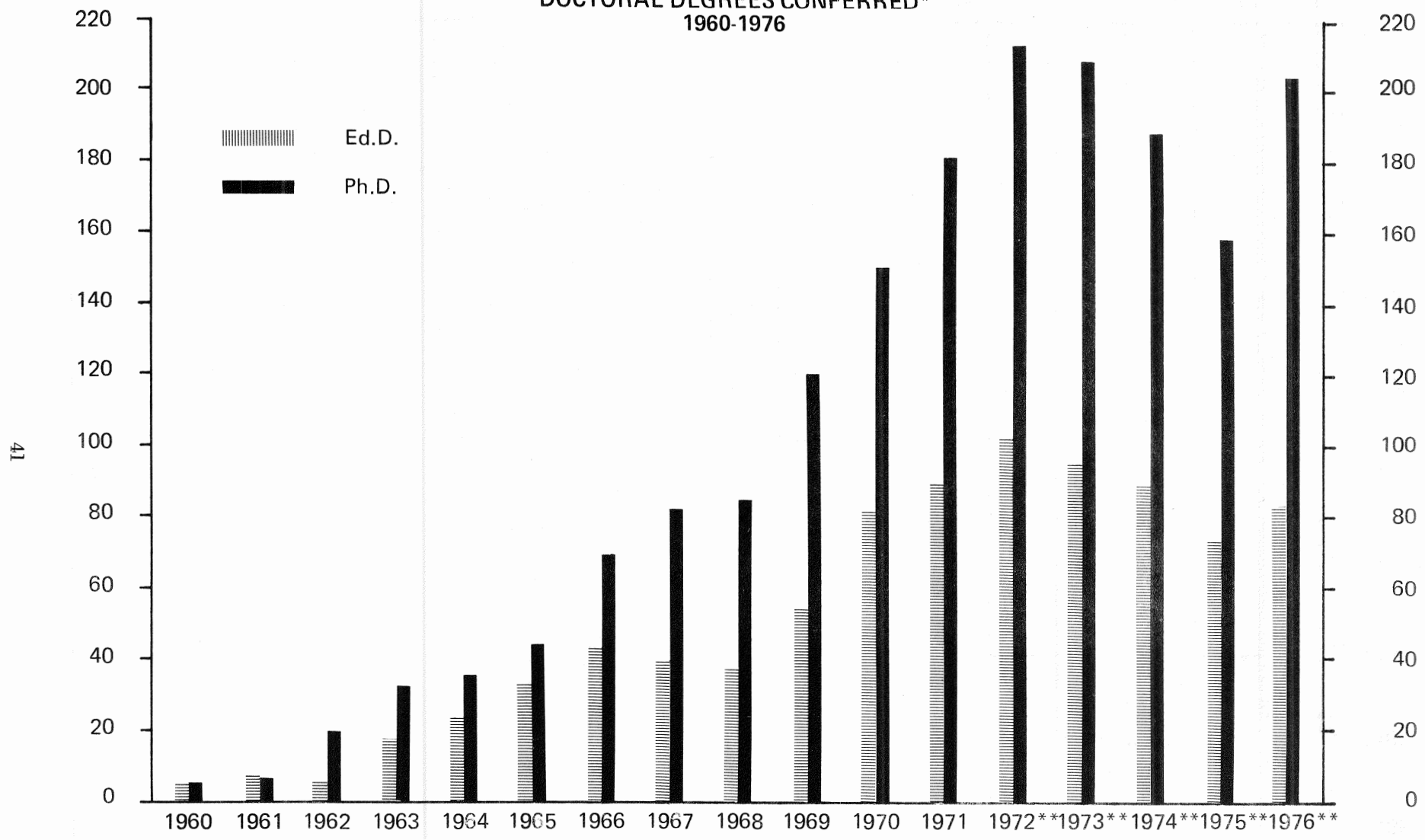
Source: Registrar's Reports

Figure 5
TOTAL DEGREES CONFERRED*
1960-1976



*Data from pages 44-46 and 47-50

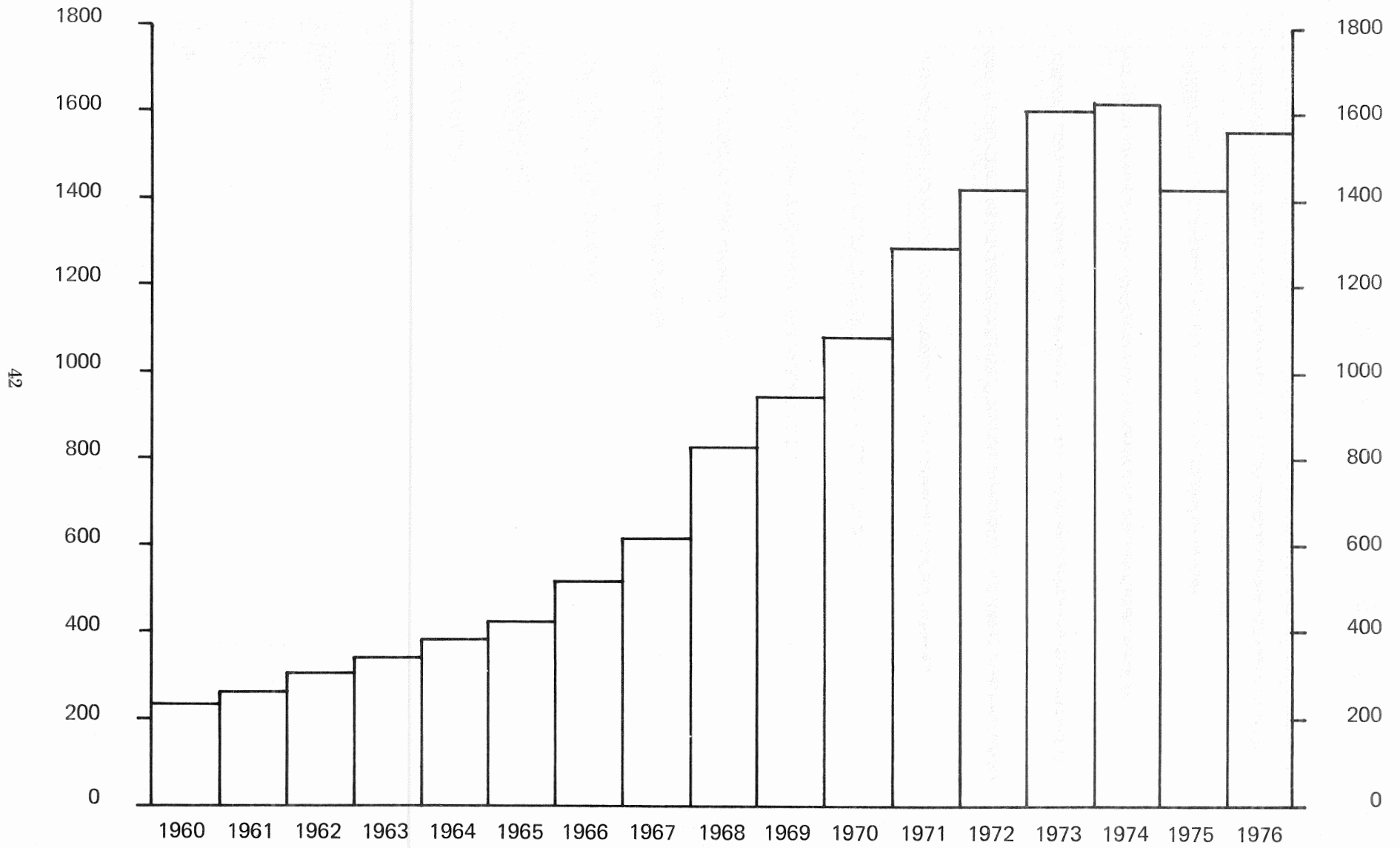
Figure 6
DOCTORAL DEGREES CONFERRED*
1960-1976



*Data from pages 44 and 47

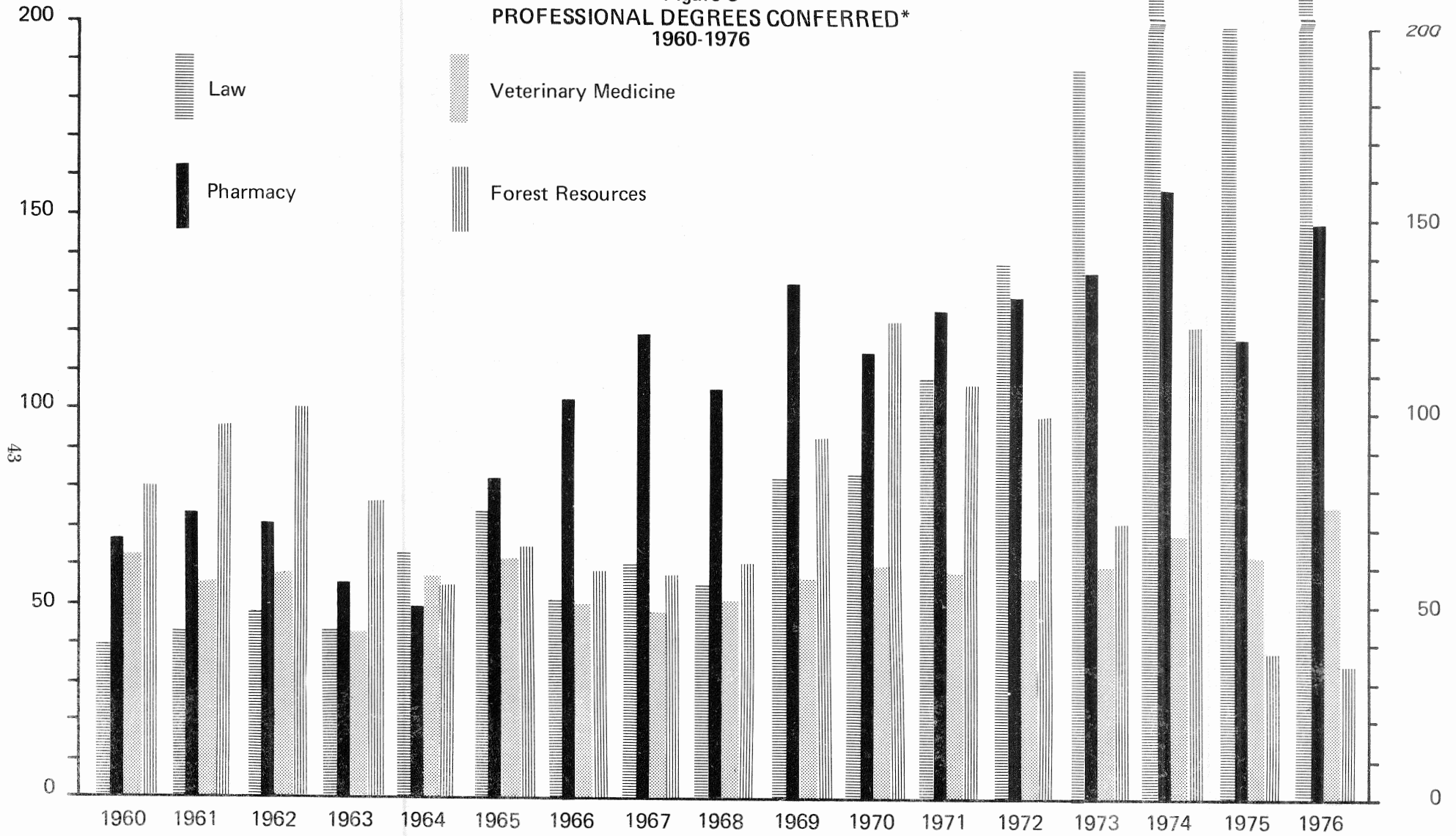
** Doctor of Public Administration Degree: 1972, one; 1973, four; 1975, six; 1976, one

Figure 7
MASTERS DEGREES CONFERRED*
1960 - 1976



*Data from pages 44 and 47-48

Figure 8
PROFESSIONAL DEGREES CONFERRED*
 1960-1976



*Data from pages 46 and 50

DEGREES CONFERRED 1960-1970 BY YEAR AND SCHOOL*

Type of Degree (First Awarded)	1960	1961	1962	1963	1964	1965	1966	1967	1968	1969	1970
GRADUATE											
Doctorates											
Ph.D. (1940)	6	7	20	33	36	45	69	83	86	121	151
Ed.D. (1948)	5	7	5	17	24	33	44	40	37	54	81
Total Doctorates	11	14	25	50	60	78	113	123	123	175	232
Specialists											
Ed.S. (1970)	0	0	0	0	0	0	0	0	0	0	175
Total Ed. Specialists	0	0	0	0	0	0	0	0	0	0	175
Masters											
M.A. (1911)	31	31	36	46	50	69	79	83	101	118	145
M.S. (1913)	41	49	67	78	90	89	100	96	139	120	127
M.F.A. (1940)	14	7	10	16	12	20	22	28	35	23	41
M.Mus.Ed. (1951)	5	7	6	7	2	3	8	4	14	8	14
M.L.A. (1957)	1	1	1	1	1	2	0	0	2	5	2
M.Ag.Ext. (1964)	0	0	0	0	3	5	3	2	7	4	3
M.For. Res. (1950)	6	5	4	5	2	5	2	1	6	5	8
M.Art.Ed. (1953)	2	2	0	1	2	3	1	4	8	12	7
M.Edu. (1932)	123	139	159	172	193	211	253	316	450	515	532
M.Pub.Adm. (1967)	0	0	0	0	0	0	0	1	6	22	20
M.Bus. Adm. (1950)	11	20	14	16	14	9	23	36	33	42	112
M.Acc. (1964)	0	0	0	0	7	5	6	9	6	11	19
M.Soc.Work (1970)	0	0	0	0	0	0	14	32	23	54	53
M.Home Ec. (1928)	1	3	4	3	6	4	5	5	4	7	4
L.L.M. (1970)	0	0	0	0	0	0	0	0	0	0	2
Total Masters	235	264	301	345	382	425	516	617	834	946	1,089
TOTAL GRADUATE	246	278	326	395	442	503	629	740	957	1,121	1,496

Cont'd: DEGREES CONFERRED 1960-1970 BY YEAR AND SCHOOL*

Type of Degree (First Awarded)	1960	1961	1962	1963	1964	1965	1966	1967	1968	1969	1970
UN DERGRADUATE											
Agriculture											
B.S.A. (1915)	117	120	131	163	167	214	195	211	257	256	219
B.S.A.E. (1931)	23	20	20	9	14	14	20	17	35	22	27
B.L.A. & B.S.L.A. Continued as Env. Design 1970	18	12	13	16	19	15	21	25	36	22	
Total Agriculture	158	152	164	188	200	243	236	253	328	300	246
Arts & Sciences											
A.B. (1910)	135	136	158	247	328	387	451	429	488	575	576
B.S. (1910)	132	141	148	160	188	230	246	207	267	322	289
B.S.Chem. (1950)	2	6	8	7	6	16	5	3	14	9	11
B.F.A. (1934)	33	36	38	49	50	75	86	74	82	99	105
B.Mus. (1959)	11	10	14	11	10	11	19	14	28	29	34
B.S.Physics (1960)	1	1	1	6	2	4	2	3	5	3	8
Total Arts & Sciences	314	330	367	480	584	723	809	730	884	1,037	1,023
Business Administration											
B.B.A. (1915)	376	333	383	432	480	525	598	596	655	720	770
Education											
B.S.Ed. (1915)	289	259	314	306	360	403	436	466	668	786	855
Environmental Design											
B.L.A.(1970)	Conferred as B.L.A. and B.S.L.A. degrees prior 1970										30
Home Economics											
B.S.H.E. (1919)	78	71	75	76	90	88	78	74	119	111	130

Cont'd: DEGREES CONFERRED 1960-1970 BY YEAR AND SCHOOL *

Type of Degree (First Awarded)	1960	1961	1962	1963	1964	1965	1966	1967	1968	1969	1970
Journalism											
A.B.J. (1924)	75	57	77	85	125	123	149	156	255	256	268
TOTAL UNDERGRADUATE	1,290	1,202	1,380	1,567	1,839	2,105	2,306	2,275	2,909	3,210	3,322
PROFESSIONAL											
Forest Resources											
E.S.F.R. (1912)	81	96	101	77	56	65	59	58	62	94	124
Law											
L.L.B. (1910)	40	42	47	43	63	74	51	61	56	0	0
J.D. (1969)	0	0	0	0	0	0	0	0	0	83	84
Pharmacy											
B.S.Phr. (1950)	67	73	71	56	50	83	102	120	106	134	116
Veterinary Medicine											
D.V.M. (1922)	63	56	58	43	57	62	51	48	52	57	61
TOTAL PROFESSIONAL	251	267	277	219	226	284	263	287	276	368	385
TOTAL DEGREES	1,787	1,747	1,983	2,181	2,507	2,892	3,198	3,302	4,142	4,699	5,203

*The number of degrees conferred each year is determined by the sum of the August, December, March, and June graduates for the particular fiscal year.

Source: Registrar's Reports

DEGREES CONFERRED 1971-1976 BY YEAR, SCHOOL, SEX*

	1971	1972	1973	1974	1975	1976		1971	1972	1973	1974	1975	1976
GRADUATE													
Doctorates							Masters						
Ph.D. (1940)							M.A. (1911)						
Male	170	179	180	153	128	165	Male	76	105	74	75	51	49
Female	12	35	29	36	31	39	Female	44	62	54	46	47	47
Total	182	214	209	189	159	204	Total	120	167	128	121	98	96
Ed.D. (1948)							M.S. (1913)						
Male	73	72	77	64	46	55	Male	129	106	133	130	105	102
Female	17	30	19	25	27	28	Female	35	50	54	54	35	37
Total	90	102	96	89	73	83	Total	164	156	187	184	140	139
D.P.A. (1972)							M.F.A. (1940)						
Male	0	1	1	4	6	1	Male	17	28	28	18	20	16
Female	0	0	0	0	0	0	Female	19	11	17	15	24	22
Total	0	1	1	4	6	1	Total	36	39	45	33	44	38
Total Doctorates							M.Mus.Ed. (1951)						
Male	243	252	258	221	180	221	Male	6	6	6	5	1	0
Female	29	65	48	61	58	67	Female	11	10	5	14	4	2
Total	272	317	306	282	238	288	Total	17	16	11	19	5	2
Specialists							M.A.M. (1972)						
Ed.S. (1970)							M.L.A. (1957)						
Male	270	71	60	63	58	72	Male	4	4	4	6	6	8
Female	370	99	110	103	99	102	Female	0	0	1	0	0	1
Total	640	170	170	166	157	174	Total	4	4	5	6	6	9
Total Specialists													
Male	270	71	60	63	58	72							
Female	370	99	110	102	99	102							
Total	640	170	170	166	157	174							

Cont'd: DEGREES CONFERRED 1971-1976 BY YEAR, SCHOOL, SEX*

	1971	1972	1973	1974	1975	1976		1971	1972	1973	1974	1975	1976
M.Ag.Ext. (1964)							M.Soc.Work (1970)						
Male	5	4	4	4	4	3	Male	16	19	32	42	20	28
Female	0	0	0	1	0	0	Female	48	27	55	54	56	60
Total	5	4	4	5	4	3	Total	64	46	87	96	76	88
M.For.Res. (1950)							M.Home Ec. (1928)						
Male	10	2	7	8	3	2	Male	6	0	0	0	0	0
Female	0	0	0	0	0	0	Female	5	0	8	4	8	7
Total	10	2	7	8	3	2	Total	11	0	8	4	8	7
M.Art Ed. (1953)							L.L.M. (1970)						
Male	1	4	1	2	2	1	Male	3	3	1	0	1	1
Female	4	11	8	5	6	8	Female	0	0	0	0	0	0
Total	5	15	9	7	8	9	Total	3	3	1	0	1	1
M.Edu. (1932)							M.A.T. (1975)						
Male	250	308	311	324	243	276	Male	0	0	0	0	0	1
Female	403	480	616	611	586	654	Female	0	0	0	0	1	4
Total	653	788	927	935	829	930	Total	0	0	0	0	1	5
M.Pub.Adm. (1967)							M.P.P.P.M. (1974)						
Male	41	40	39	32	28	23	Male	0	0	0	0	0	2
Female	4	0	4	6	3	9	Female	0	0	0	0	0	0
Total	45	40	43	38	31	32	Total	0	0	0	0	0	2
M.Bus.Adm. (1950)							Total Masters						
Male	139	118	113	115	134	136	Male	713	770	777	794	638	682
Female	3	2	4	7	10	16	Female	576	653	827	821	785	872
Total	142	120	117	122	144	152	Total	1,289	1,423	1,604	1,615	1,423	1,554
M.Acc. (1964)							TOTAL GRADUATE DEGREES						
Male	10	20	23	30	20	33	Male	1,223	1,093	1,095	1,078	876	975
Female	0	0	1	4	5	5	Female	978	817	985	985	942	1,041
Total	10	20	24	34	25	38	Total	2,201	1,910	2,080	2,063	1,818	2,016

Cont'd: DEGREES CONFERRED 1971-1976 BY YEAR, SCHOOL, SEX*

	1971	1972	1973	1974	1975	1976		1971	1972	1973	1974	1975	1976	
UNDERGRADUATE														
Agriculture														
B.S.A. (1915)														
Male	189	211	185	213	198	241								
Female	12	13	21	21	52	54								
Total	201	224	206	234	250	295								
B.S.A.E. (1931)														
Male	22	15	20	22	12	13								
Female	1	0	0	0	0	0								
Total	23	15	20	22	12	13								
B.S.E.H. (1971)														
Male	2	10	24	26	16	18								
Female	0	2	0	0	5	4								
Total	2	12	24	26	21	22								
Total Agriculture														
Male	213	236	229	261	226	272								
Female	13	15	21	21	57	58								
Total	226	251	250	282	283	330								
Arts & Sciences														
A.B. (1910)														
Male	299	292	307	336	258	266								
Female	290	302	261	336	297	273								
Total	589	594	568	672	555	539								
B.S. (1910)														
Male	206	207	219	212	222	265								
Female	63	76	75	77	79	84								
Total	269	283	294	289	301	349								
B.S.Chm. (1950)														
Male							2	4	4	0	3	6		
Female							1	1	2	1	0	0		
Total							3	5	6	1	3	6		
B.F.A. (1934)														
Male							34	33	30	34	48	40		
Female							100	94	96	147	102	127		
Total							134	127	126	181	150	167		
B.Mus. (1959)														
Male							11	10	18	12	17	11		
Female							15	20	33	31	21	32		
Total							26	30	51	43	38	43		
B.S.Pcs. (1960)														
Male							2	1	1	1	1	1		
Female							0	0	0	0	0	0		
Total							2	1	1	1	1	1		
Total Arts & Sciences														
Male							554	547	579	595	549	589		
Female							469	493	467	592	499	516		
Total							1,023	1,040	1,046	1,187	1,048	1,105		
Business Administration														
B.B.A. (1915)														
Male							797	709	738	698	663	636		
Female							76	77	84	87	124	164		
Total							873	786	822	785	787	800		

Cont'd: DEGREES CONFERRED 1971-1976 BY YEAR, SCHOOL, SEX*

	1971	1972	1973	1974	1975	1976
Education						
B.S.Ed. (1915)						
Male	181	202	178	165	139	150
Female	668	766	698	683	625	581
Total	849	968	876	848	764	731
Environmental Design						
B.L.A. (1970)						
Male	35	30	28	31	29	33
Female	0	0	0	2	3	8
Total	35	30	28	33	32	41
Home Economics						
B.S.H.E. (1919)						
Male	0	0	0	1	1	3
Female	114	167	165	197	191	207
Total	114	167	165	198	192	210
Journalism						
A.B.J. (1924)						
Male	138	137	156	157	186	196
Female	97	139	123	151	159	178
Total	235	276	279	308	345	374
B.S.W. (1975)						
Male	0	0	0	0	0	0
Female	0	0	0	0	0	4
Total	0	0	0	0	0	4
TOTAL UNDERGRADUATE DEGREES						
Male	1,918	1,861	1,908	1,908	1,793	1,879
Female	1,437	1,657	1,558	1,733	1,658	1,716
Total	3,355	3,518	3,466	3,641	3,451	3,595

	1971	1972	1973	1974	1975	1976
PROFESSIONAL						
Forest Resources						
B.S.F.R. (1912)						
Male	107	99	72	120	37	30
Female	0	0	0	2	1	3
Total	107	99	72	122	38	33
Law						
J.D. (1969)						
Male	108	134	187	197	185	184
Female	1	3	2	13	15	33
Total	109	137	189	210	200	217
Pharmacy						
B.S.Pharm. (1950)						
Male	106	113	122	125	86	99
Female	20	17	14	32	34	50
Total	126	130	136	157	120	149
Veterinary Medicine						
D.V.M. (1922)						
Male	55	51	57	60	54	56
Female	4	6	3	7	10	19
Total	59	57	60	67	64	75
TOTAL PROFESSIONAL DEGREES						
Male	376	397	438	502	362	369
Female	25	26	19	54	60	105
Total	401	423	457	556	422	474
TOTAL DEGREES						
Male	3,520	3,352	3,441	3,488	3,031	3,223
Female	2,437	2,499	2,562	2,772	2,660	2,862
Total	5,957	5,851	6,003	6,260	5,691	6,085

*The number of degrees conferred each year determined by the sum of the August, December, March, and June graduates for the particular fiscal year.

Source: Registrar's Reports

ACADEMIC INFORMATION

Year	Grade	Score	Percentage	Grade Point Average
1998	10	85	85%	3.5
1999	11	88	88%	3.7
2000	12	90	90%	3.8

ACADEMIC INFORMATION

Year	Grade	Score	Percentage	Grade Point Average
2001	10	85	85%	3.5
2002	11	88	88%	3.7
2003	12	90	90%	3.8

**CLASS SIZES, COURSES, AND SECTIONS: REGULAR ENROLLMENT
FY 1975-1976**

	<i>Junior Division</i>	<i>Senior Division</i>	<i>Professional Division</i>	<i>Graduate Division</i>	<i>All Divisions</i>
Average Class Size Per Course Section	30	23	36	12	21
Number of Courses	451	1,917	260	2,240	4,868
Number of Class Sections	4,229	5,502	579	5,851	16,161

Source: Office of Institutional Research and Planning

**TOTAL UNIVERSITY STUDENT CREDIT HOURS
FY 1975-1976**

	<i>Junior Division</i>	<i>Senior Division</i>	<i>Professional Division</i>	<i>Graduate Division</i>	<i>Total</i>
Regular Enrollment	402,631	399,954	75,561	145,197	1,023,343
In-Service Education		3,750		22,915	26,665
Evening	12,665	2,185			14,850
Extension	14,440	2,540			16,980
Independent Study	3,784	3,380			7,164
Subtotal	433,520	411,809	75,561	168,112	1,089,002
Military	810	879			1,689
Total	434,330	412,688	75,561	168,112	1,090,691

Source: Office of Institutional Research and Planning

**STUDENT CLASS RANK BY STUDENT CLASSIFICATION
FALL QUARTER 1976 CUMULATIVE GRADE POINT AVERAGE**

Lower Limit of Cumulative Grade Point Average and Number in Group

STUDENT LEVEL	TOTAL STUDENTS	UPPER 1/10		UPPER 1/4		UPPER 1/3		UPPER 1/2		UPPER 2/3		AVG. GPA
		No.	GPA	No.	GPA	No.	GPA	No.	GPA	No.	GPA	
Special Studies	172	19	3.00	66	2.00	66	2.00	88	1.00	172	.00	1.10
Freshmen	2,941	337	3.67	749	3.27	1,132	3.00	1,486	2.67	1,971	2.17	2.52
Sophomores	3,424	349	3.65	885	3.17	1,184	3.00	1,732	2.67	2,313	2.33	2.66
Juniors	3,978	398	3.67	1,003	3.25	1,323	3.05	2,001	2.72	2,674	2.44	2.73
Seniors	5,111	512	3.61	1,288	3.28	1,700	3.13	2,563	2.84	3,435	2.57	2.85
Irregulars & Transients	365	63	4.00	91	3.70	122	3.54	183	3.13	246	2.80	2.95
Professionals	1,599	160	3.63	401	3.31	533	3.12	802	2.81	1,076	2.48	2.53
Graduates	3,696	751	4.00	949	3.90	1,219	3.83	1,917	3.67	2,563	3.50	3.53
Total	21,286											2.61

Source: Office of Institutional Research and Planning

DISTRIBUTION OF STUDENT CREDIT HOUR LOADS FALL QUARTER 1976

Credit Hour Load	Special Studies		Frosh		Soph		Junior		Senior		SONAT ¹		Irreg Trans		Grad		Prof		Total	
	No.	%	No.	%	No.	%	No.	%	No.	%	No.	%	No.	%	No.	%	No.	%	No.	%
1	-		1	*	-		1	*	3	*	-		2	1	10	*	-		17	*
2	-		-		-		-		3	*	-		3	1	4	*	-		10	*
3	-		1	*	1	*	1	*	6	*	-		5	1	7	*	1	*	22	*
4	-		-		-		2	*	6	*	-		1	*	5	*	-		14	*
5	-		26	1	42	1	54	1	125	3	(10)	(28)	90	24	1,239	36	2	*	1,578	7
6	-		4	*	8	*	3	*	12	*	(1)	(3)	11	3	37	1	-		75	*
7	-		-		-		2	*	6	*	-		-	-	33	1	3	*	44	*
8	-		-		4	*	4	*	16	3	-		2	1	40	1	4	*	70	*
9	-		1	*	4	*	8	*	16	3	-		3	1	22	1	5	*	59	*
10	2	1	77	2	174	5	222	5	304	7	(20)	(55)	70	19	1,150	31	11	1	2,010	9
11	7	4	55	2	66	2	41	1	88	2	(1)	(3)	4	1	239	6	7	*	507	2
12	4	2	18	*	28	*	37	1	50	*	-		2	1	81	2	39	2	259	1
13	2	1	14	*	38	1	82	2	96	2	-		11	3	74	2	39	2	356	2
14	-		26	1	45	1	99	2	146	4	-		3	1	11	*	142	9	472	2
15	25	15	1,000	27	1,499	43	2,055	50	1,685	40	(4)	(11)	104	28	568	15	303	19	7,239	34
16	121	72	2,008	55	1,099	32	728	18	442	11	-		24	7	114	3	351	22	4,887	23
17	4	2	276	8	150	4	160	4	154	4	-		4	1	15	*	261	17	1,024	5
18	1	1	70	2	90	3	115	3	179	4	-		7	2	5	*	52	3	519	2
19	1	1	22	1	31	*	74	2	113	3	-		1	*	3	*	112	7	357	2
20	1	1	51	1	122	3	292	7	459	11	-		15	4	26	1	109	7	1,075	5
21	-		18	*	59	2	87	2	121	3	-		3	1	5	*	89	6	382	2
22	-		4	*	9	*	12	*	37	*	-		-	-	-	-	2	*	64	*
23	-		3	*	-		17	*	33	*	-		-	-	-	-	2	*	55	*
24	-		-		4	*	3	*	12	*	-		-	-	-	-	44	3	63	*
25	-		1	*	-		8	*	33	*	-		-	-	-	-	-	-	42	*
26	-		2	*	3	*	2	*	16	*	-		-	-	-	-	1	*	24	*
27	-		-		1	*	-		2	*	-		-	-	-	-	-	-	3	*
28	-		-		1	*	-		2	*	-		-	-	-	-	-	-	3	*
29	-		-		-		1	*	1	*	-		-	-	-	-	-	-	2	*
30	-		-		-		-		4	*	-		-	-	-	-	-	-	4	*
31	-		1	*	-		-		-	-	-		-	-	-	-	-	-	1	*
32	-		-		-		-		1	*	-		-	-	-	-	-	-	1	*
Total	168	100	3,679	100	3,478	100	4,110	100	4,171	100	(36)	(100)	365	100	3,688	100	1,579		21,238	100

¹ Students of Nursing, Athens (SONAT) not included in totals
*Less than one percent

Source: Office of Institutional Research and Planning

**HONORS PROGRAM ENROLLMENT AND SECTIONS
FY 1975-1976**

<i>School/Students/Sections</i>	<i>Summer</i>	<i>Fall</i>	<i>Winter</i>	<i>Spring</i>	<i>Total</i>
Arts & Sciences					
Students	54	946	884	785	2,669
Sections	4	60	55	56	175
Business					
Students	-	51	59	72	182
Sections	-	3	4	4	11
Total					
Students	54	997	943	857	2,871
Sections	4	63	59	60	186
Average Students Per Section					
Arts & Sciences	13.5	15.8	16.1	14.0	15.3
Business	-	20.0	14.8	18.0	16.5
Total	13.5	15.8	16.0	14.3	15.3

Source: Annual Reports of Honors Program 1974-75 and 1975-76

HONORS PROGRAM AWARDS

<i>Year</i>	<i>Graduates With General Honors</i>	<i>Junior Certificate Winners</i>
1962	—	24
1963	—	40
1964	19	44
1965	20	70
1966	31	66
1967	39	84
1968	35	84
1969	46	94
1970	55	84
1971	82	127
1972	94	182
1973	121	165
1974	137	193
1975	133*	202*
1976	138	184

* Includes June and August 1975 nominees

Source: Annual Reports of Honors Program 1974-75 and 1975-76

**DISTRIBUTION OF HONORS STUDENTS BY MAJOR AND CLASS
FALL 1976**

COLLEGE AND MAJOR	CLASS					COLLEGE AND MAJOR	CLASS				
	Fr.	So.	Jr.	Sr.	Total		Fr.	So.	Jr.	Sr.	Total
AGRICULTURE	3	15	7	6	31	Pre-Nursing	4	2	0	0	6
						Pre-Pharmacy	1	2	0	0	3
ARTS & SCIENCES						Pre-Physical Therapy	2	3	0	0	5
Anthropology	0	5	3	5	13	Pre-Veterinarian Sci.	14	14	7	1	36
Art	10	12	16	8	46	Psychology	6	10	9	9	34
Biochemistry	1	3	3	7	14	Romance Language	3	7	1	5	16
Biology	12	6	9	3	30	Pre-Law	18	15	5	3	41
Botany	0	3	0	2	5	Sociology & Social Sci	1	0	3	3	7
Chemistry	6	3	3	7	19	Statistics & Computer Sci.	4	4	3	4	15
Classics	0	0	0	1	1	Zoology	1	3	6	7	17
Comparative Literature	0	0	0	1	1	Undecided	29	24	9	0	62
Drama	1	3	2	1	7	Arts & Sciences Total	197	228	163	147	735
Economics	0	1	3	3	7	BUSINESS ADMINISTRATION	34	33	41	22	130
English	5	5	3	12	25	EDUCATION	4	4	10	7	25
Geography	1	0	2	0	3	ENVIRONMENTAL DESIGN	3	4	2	1	10
Geology	2	4	5	2	13	FOREST RESOURCES	8	5	1	0	14
German/Russian	0	1	1	2	4	HOME ECONOMICS	3	6	4	1	14
History	4	7	11	10	32	JOURNALISM	38	33	50	32	153
Linguistics	0	0	0	1	1	PHARMACY	0	(1st)4	(2nd)3	(3rd)2	9
Mathematics	11	8	8	3	30	SOCIAL WORK	1	1	1	0	3
Medical Technology	1	2	0	0	3	TOTAL	291	333	282	218	1,124
Microbiology	0	1	4	4	9						
Music	11	11	15	9	46						
Philisophy & Religion	0	4	2	1	7						
Physics	2	3	2	2	9						
Political Science	10	22	8	22	62						
Pre-Dentistry	0	6	4	0	10						
Pre-Engineering	0	1	0	1	2						
Pre-Medicine	37	33	16	8	94						

Source: Honors Program

STATISTICAL ANALYSIS OF ADVANCED PLACEMENT

January 1974 - June 1975
Exemptions Granted

July 1975 - July 1976
Exemptions Granted

Subject	January 1974 - June 1975 Exemptions Granted			July 1975 - July 1976 Exemptions Granted			Total Exemptions	
	Total Exemption Tests	With Credit	Without Credit	Total Exemptions	Total Exemption Tests	With Credit		Without Credit
Art	--	--	--	--	4	4	--	4
Biology	215	40	--	40	221	49	--	49
Chemistry	206	26	--	26	175	33	--	33
English	2,589	962	33	995	2,371	488	27	515
French	561	170	787	957	466	114	532	646
German	69	33	95	128	81	26	107	133
Greek	1	1	2	3	--	--	--	--
Hebrew	4	5	5	10	1	2	2	4
History	2,670	55	1,939	1,994	2,467	75	1,597	1,672
Italian	3	4	4	8	--	--	--	--
Latin	62	18	74	92	43	14	64	78
Math	1,357	42	948	990	1,097	51	1,033	1,084
Music	--	--	--	--	2	2	--	2
Physics	6	--	3	3	16	--	4	4
Political Science	243	6	40	46	201	7	41	48
Psychology	112	8	5	13	89	9	15	24
Russian	--	--	--	--	1	--	--	--
Spanish	669	164	744	908	474	108	600	708
TOTALS	8,767	1,534	4,679	6,213	7,709	982	4,022	5,004
Percentage of credits and exemptions	100%	17.5%	53.4%	70.9%	100%	12.7%	52.2%	64.9%

Source: Honors Program

DISTRIBUTION OF GRADES BY CLASS FALL QUARTER 1974-1976

Quarter & Class	Percentage Distribution of Grades											
	A	B	C	D	F	WF	S	U	AU	I	W	NR ¹
Fall, 1974												
Undergraduate												
Freshman	16.9	25.0	23.2	7.1	3.6	0.2	16.9	0.4	*	1.8	4.9	*
Sophomore	23.8	27.2	20.1	5.2	2.6	0.3	11.2	0.4	0.1	1.8	7.3	0.1
Junior	29.1	31.0	18.1	4.7	2.1	0.3	5.4	0.2	0.1	2.3	6.7	*
Senior	32.1	29.7	15.2	2.9	1.2	0.2	10.7	0.2	0.1	2.9	4.6	0.2
Irregular	33.2	28.9	11.9	2.4	1.7	0.2	4.7	0.2	1.5	5.4	9.8	—
Total Undergraduate	25.6	28.3	19.0	4.9	2.4	0.2	10.9	0.3	0.1	2.2	5.9	*
Professional**	22.8	30.6	14.3	2.5	0.9	*	25.5	—	*	2.2	1.1	—
Graduate	48.1	23.5	2.7	0.2	0.1	*	12.9	*	0.7	8.5	3.0	0.2
Fall, 1975												
Undergraduate												
Freshman	17.7	25.6	24.1	7.8	3.5	0.2	12.9	0.3	*	1.8	5.5	*
Sophomore	23.6	28.5	19.2	5.4	2.3	0.2	10.7	0.3	*	1.8	7.4	—
Junior	27.1	31.5	18.6	5.0	2.3	0.2	5.3	0.2	0.1	2.4	6.8	*
Senior	32.7	30.3	14.9	2.7	1.3	0.1	9.8	0.2	0.1	2.7	4.6	0.1
Irregular	24.3	26.7	16.3	6.1	5.4	0.5	10.2	*	0.2	3.5	6.2	—
Total Undergraduate	25.5	29.0	19.0	5.2	2.4	0.2	9.6	0.2	*	2.2	6.0	*
Professional**	20.5	36.4	16.2	2.1	0.5	*	21.3	—	0.1	1.9	0.6	—
Graduate	47.5	22.9	2.9	0.1	0.1	*	14.1	*	0.4	8.1	3.2	0.7
Fall, 1976												
Undergraduate												
Special Studies	12.8	29.3	26.3	4.1	2.0	—	18.2	0.6	—	1.8	4.4	—
Freshman	18.3	26.6	22.9	7.1	3.2	0.1	14.5	0.3	*	1.3	4.9	0.2
Sophomore	24.1	28.4	19.4	5.2	2.8	0.1	10.0	0.2	*	1.7	7.4	0.1
Junior	27.7	31.5	18.2	5.1	2.7	0.1	5.6	0.2	*	2.3	6.1	*
Senior	30.8	31.4	15.5	3.2	1.5	0.1	9.1	0.2	0.1	2.8	4.8	*
Irregular	37.8	25.9	11.6	3.2	1.4	0.1	6.4	—	1.1	6.0	6.3	—
Total Undergraduate	25.4	29.5	18.9	5.1	2.5	0.1	9.8	0.2	*	2.1	5.8	*
Professional**	23.5	45.5	18.4	1.7	0.6	*	6.9	*	—	2.0	1.0	—
Graduate	48.1	21.8	2.6	0.2	0.1	*	14.2	*	0.6	8.4	3.0	0.3

¹ Not recorded

* Less than 0.1 percent

** Law grades are not included in the professional grade distributions

Source: Office of Institutional Research and Planning

**GRADUATE FELLOWSHIPS AND ASSISTANTSHIPS
AWARDED THROUGH THE GRADUATE SCHOOL
FALL 1976**

<i>Type</i>	<i>Number</i>
NSF Graduate Fellows	3
University of Georgia Foundation Scholarships	1
Graduate Research Assistants	25
Graduate Non-Teaching Assistants	155
 TOTAL	 184

Source: Office of the Dean of the Graduate School

**GRADUATE TEACHING AND RESEARCH ASSISTANTSHIPS
SUPPORTED BY DEPARTMENTS
FALL 1976**

<i>Type</i>	<i>Number of Assistantships</i>	<i>Number of Assistants</i>
Graduate Assistants	649	566
Graduate Teaching Assistants	297	295
Graduate Laboratory Assistants	293	232
Graduate Research Assistants	472	431
 TOTAL	 1,711	 1,524

Source: Office of Institutional Research and Planning

STUDENT RELATED INFORMATION

DIVISION OF STUDENT AFFAIRS

The Division of Student Affairs believes student potential is enhanced through a systematic emphasis on individual needs within the educational environment, and seeks to implement this philosophy through services and programs which help students assess and utilize available academic resources; interact with and develop respect for others of similar and diverse backgrounds; plan and prepare for chosen life work; and maintain mental and physical health while integrating personal, professional, and social values.

Eight departments provide the student with services and programs in the following areas:

The Career Planning and Placement Office provides career planning and advisement, comprehensive placement services, information regarding professional and graduate schools, and assists students in locating employment while attending the University.

The Counseling and Testing Center provides counseling for students undecided about a major and/or career. When appropriate, psychological tests are administered, scored, and reviewed.

The Office of International Services and Programs provides counseling and advising services to assist foreign students, to promote international understanding, and to advise American students and faculty interested in work, study or travel abroad.

The Office of Judicial Programs provides legal advice for University student related policy, supervises the Student Judiciary System, and assists in the enforcement and formulation of University regulations.

The Department of Student Activities is responsible for providing programs, services, and facilities for the students to meet social, cultural, recreational, and intellectual needs.

The Student Financial Aid Office provides financial assistance to qualified students through loans, scholarships, work/study, and coordinates veteran benefits and affairs.

The University Health Service provides comprehensive physical and mental health services on an outpatient and inpatient basis. Special services include specialty clinics, pharmaceutical laboratory, x-ray and physical therapy services.

The Department of University Housing provides residence hall and family housing accommodations to students, as well as opportunities for residents to participate in social, educational, developmental, and recreational programs designed to further the students' personal, scholastic, and social development.

CAREER PLANNING AND PLACEMENT SERVICES

<i>SENIOR-GRADUATE-ALUMNI</i>	<i>1972-73</i>	<i>1973-74</i>	<i>1974-75</i>	<i>1975-76</i>	<i>1976-77</i> <i>(Estimated)</i>
Number Active Beginning of Year	2,381	2,040	2,082	1,775	1,656
Number Added During the Year	2,594	2,436	2,196	2,233	2,400
TOTAL CASE LOAD	4,975	4,476	4,278	4,008	4,056
TOTAL PLACEMENT	2,935	2,394	2,503	2,352	2,600
Number Active End of Year	2,040	2,082	1,775	1,656	1,456

CAMPUS INTERVIEW VISITS

Business and Industry	389	395	391	361	390
Educational Institutions	86	68	138	86	100
Government Agencies	53	41	47	70	75
Military Organizations	17	35	36	29	35
Graduate Schools	8	11	13	13	11
Co-op/Intern/Summer	40	32	30	44	10
TOTAL VISITS	593	582	655	603	621

STUDENT EMPLOYMENT

Number of Individual Applicants	2,953	3,196	3,995	3,960	3,985
Number of Personal Interviews	4,695	4,243	5,512	5,109	5,310
Number Job Placements Reported	1,052	1,258	1,189	1,399	1,430

Source: Career Planning and Placement Office

**FINANCIAL AID PROGRAMS
UNIVERSITY ADMINISTERED**

	<i>1974-75</i>		<i>1975-76</i>		<i>Estimated 1976-77</i>	
	<i>Number</i>	<i>Amount</i>	<i>Number</i>	<i>Amount</i>	<i>Number</i>	<i>Amount</i>
National Direct Student Loan	1,126	\$ 978,116	1,369	\$ 1,145,747	1,500	\$ 1,400,000
University Trust Fund Loans	45	42,000	102	101,500	110	110,000
University Emergency Loan	1,370	166,500	1,391	170,394	1,450	200,000
Health Professions Loans	81	82,280	108	126,588	110	125,000
College Work Study Program	650	354,529	689	395,397	800	650,000
Basic Educational Opportunity Grants	366	221,865	758	621,443	1,500	2,000,000
Educational Opportunity Grants	229	155,400	105	68,469	75	50,000
Health Professions Grant	44	28,080	0	0	0	0
Law Enforcement Grant	310	46,331	70	39,938	75	40,000
Georgia Incentive Scholarships	0	0	204	58,925	250	60,000
General Motors Scholarship	4	6,000	3	4,500	2	3,000
Kahn Memorial Scholarship	6	6,000	9	8,100	9	9,000
National Merit Scholarships						
University Sponsored	120	80,000	125	59,000	130	75,000
National Merit Scholarship						
Corporation Sponsored	25	29,000	50	50,000	50	50,000
National Achievement Scholars	10	7,000	16	14,500	18	15,000
Regents Scholarship	97	40,125	89	47,390	100	50,000
University Freshman Scholarship	82	8,200	100	10,000	100	10,000
Other Scholarship Programs	240	84,650	383	329,505	400	350,000

Source: Student Financial Aid Office

**FINANCIAL AID PROGRAMS
PRIVATE AND STATE ADMINISTERED**

	<i>1974-75</i>		<i>1975-76</i>		<i>Estimated 1976-77</i>	
	<i>Number</i>	<i>Amount</i>	<i>Number</i>	<i>Amount</i>	<i>Number</i>	<i>Amount</i>
State Teacher Scholarship Program	10	\$ 6,000	0	\$ 0	0	\$ 0
State Scholarship Program	27	29,300	47	49,000	60	65,000
Georgia Higher Education Assistance Corporation Loans	2,150	2,580,000	2,231	2,677,200	2,400	2,750,000
Guaranteed Loans and Scholarships Other States	375	450,000	392	475,000	400	500,000
G. I. Bill	4,000	10,000,000	2,000	7,000,000	1,500	6,000,000
Other Outside Scholarship Assistantship Programs	1,025	625,000	1,102	675,000	1,150	700,000

Source: Student Financial Aid Office

SOCIAL SORORITIES AND FRATERNITIES

SORORITIES

FRATERNITIES

<i>Sororities</i>	<i>Date Established on Campus</i>	<i>Total Membership*</i>	<i>Fraternities</i>	<i>Date Established on Campus</i>	<i>Total Membership*</i>
Alpha Chi Omega	1938	124	Acacia	1966	1
Alpha Delta Pi	1933	104	Alpha Epsilon Pi	1926	52
Alpha Gamma Delta	1923	77	Alpha Gamma Rho	1927	44
Alpha Omicron Pi	1934	120	Alpha Phi Alpha	1969	20
Chi Omega	1922	135	Alpha Tau Omega	1878	78
Delta Delta Delta	1933	112	Chi Phi	1867	44
Delta Gamma	1967	127	Chi Psi	1890	55
Delta Phi Epsilon	1935	105	Delta Chi	1965	37
Kappa Alpha Theta	1937	127	Delta Tau Delta	1882	43
Kappa Delta	1924	114	Kappa Alpha	1868	95
Kappa Kappa Gamma	1947	139	Kappa Alpha Psi	1970	13
Phi Mu	1921	126	Kappa Sigma	1901	44
Pi Beta Phi	1936	93	Lambda Chi Alpha	1915	69
Sigma Delta Tau	1924	90	Omega Psi Phi	1973	9
Sigma Kappa	1964	50	Phi Beta Sigma	1975	11
Zeta Tau Alpha	1949	128	Phi Delta Theta	1871	63
			Phi Gamma Delta	1968	59
			Phi Kappa Psi	1974	27
			Phi Kappa Tau	1950	48
			Phi Kappa Theta	1967	21
			Pi Kappa Alpha	1908	44
			Pi Kappa Phi	1915	34
			Sigma Alpha Epsilon	1866	77
			Sigma Chi	1872	65
			Sigma Nu	1873	46
			Sigma Phi Epsilon	1963	46
			Sigma Pi	1948	26
			Tau Epsilon Phi	1919	60
			Tau Kappa Epsilon	1971	89
			Theta Chi	1948	42
			Zeta Beta Tau	1915	26
Total		1,771			1,388

* Figures are for Fall, 1976

Source: Advisor to Sororities, Advisor to Fraternities, Department of Student Activities, Division of Student Affairs

HONORARY FRATERNITIES AT THE UNIVERSITY OF GEORGIA

National Honorary Fraternities

<i>Name</i>	<i>Date</i>	<i>Type</i>
Alpha Epsilon Delta	1932	Pre-medical
Alpha Lambda Delta	1934	Freshman Academic
Alpha Zeta	1914	Agriculture, Forestry, Veterinary Medicine, Home Economics, and Environmental Design
Beta Gamma Sigma	1918	Commerce and Business Administration
Blue Key	1926	Student Activities
Gamma Iota Sigma	1975	Risk Management and Insurance
Gamma Sigma Delta	1961	Agriculture, Forestry, Home Economics, and Veterinary Medicine
Gamma Theta Upsilon	1966	Geography
Kappa Delta Epsilon	1956	Education
Kappa Delta Pi	1929	Education
Kappa Tau Alpha	1929	Journalism
Mortar Board	1939	Leadership
Omicron Delta Epsilon	1963	Economics
Omicron Delta Kappa	1934	Leadership
Phi Alpha Theta	1956	History
Phi Beta Kappa	1914	Liberal Arts
Phi Eta Sigma	1938	Freshman Academic
Phi Kappa Phi	1923	General
Phi Sigma	1951	Biological Sciences
Phi Sigma Tau	1973	Philosophy
Phi Zeta	1925	Veterinary Medicine
Pi Sigma Alpha	1948	Government and Political Science
Psi Chi	1929	Psychology
Rho Chi	1949	Pharmacy
Sigma Delta Pi	1955	Spanish
Sigma Xi	1946	Scientific Research
Xi Sigma Pi	1941	Forestry

In addition to the national honoraries, the following local honorary fraternities exist to recognize student achievement:

Aghon Society	Greekhorsemen	Sphinx	Zodiac
Biftad	Gridiron	Z-Club	

Source: Department of Student Activities

**SELECTED PERSONAL CHARACTERISTICS OF STUDENTS
FALL 1976**

	<i>Special Studies</i>	<i>Frosh</i>	<i>Soph</i>	<i>Junior</i>	<i>Senior</i>	<i>SONAT¹</i>	<i>Irreg. Trans</i>	<i>Grad</i>	<i>Prof</i>	<i>Total</i>
Total Students	168	3,679	3,478	4,110	4,171	(36)	365	3,688	1,579	21,238
Admission Status										
Admitted as Freshmen	166	3,336	2,288	1,993	1,814	(33)	NA	NA	NA	9,597
Transfer	2	343	1,190	2,117	2,357	(3)	275	NA	NA	6,284
New Student							90	2,427	1,140	3,657
Previous UGA Student								1,261	439	1,700
Registration Status										
Full-Time	159	3,510	3,175	3,765	3,583	(4)	172	2,219	1,546	18,129
Part-Time	9	169	303	345	588	(32)	193	1,469	33	3,109
Ethnic Origin										
American Indian	1	5	7	21	12		2	14	6	68
American Negro	33	199	129	132	83	(7)	20	114	43	753
Oriental American	1	11	10	12	21			14	7	76
Spanish American		15	7	20	12		5	18	10	87
Foreign	2	10	24	29	16		27	262	7	377
Caucasian	130	3,399	3,273	3,851	3,991	(29)	278	3,241	1,500	19,663
Other	1	40	28	45	37		32	25	6	214
Alumni Relationship										
Parent										
Father	16	320	286	354	379	(5)	19	298	117	1,789
Mother	4	136	133	160	149		13	154	55	804
Both	14	184	185	222	204	(2)	8	217	55	1,089
Neither	134	3,039	2,874	3,374	3,439	(29)	325	3,019	1,352	17,556
Sibling										
None	147	3,112	2,854	3,482	3,470	(31)	331	3,555	1,402	18,353
1	17	404	467	463	512	(4)	25	95	133	2,116
2	3	133	119	111	139	(1)	5	23	31	564
3	1	20	29	40	37		2	9	11	149
4 or more		10	9	14	13		2	6	2	56

Cont'd: SELECTED PERSONAL CHARACTERISTICS OF STUDENTS: FALL 1976

	<i>Special Studies</i>	<i>Frosh</i>	<i>Soph</i>	<i>Junior</i>	<i>Senior</i>	<i>SONAT</i> ¹	<i>Irreg. Trans</i>	<i>Grad</i>	<i>Prof</i>	<i>Total</i>
Marital Status										
Single	164	3,598	3,287	3,777	3,544	(32)	204	1,769	1,074	17,417
Married	4	74	164	291	575	(3)	141	1,744	471	3,464
Widowed		1	2	2	3		1	21	1	31
Divorced		6	25	40	49	(1)	19	154	33	326
Veteran Status										
Veteran	3	45	106	146	269	(1)	65	345	180	1,159
Non-Veteran	165	3,634	3,372	3,964	3,902	(35)	300	3,343	1,399	20,079

69

¹Students of Nursing, Athens (SONAT) not included in totals

NA: Not Available

Source: Office of Institutional Research and Planning

**STUDENT HOUSING
RESIDENCE HALLS**

<i>Women's Residence Halls</i>	<i>Date of Initial Occupancy</i>	<i>Fall 1976 Occupancy</i>	<i>Capacity</i>
Boggs	1961	160	164
Brumby	1966	999	1,000
Church	1961	161	164
Creswell	1963	1,007	1,024
Mary Lyndon	1937	120	123
Mell	1961	159	162
Myers*	1953	156	160
Reed*	1953	243	243
Rutherford	1938	152	154
Sub-Total 8 Buildings		3,157	3,194

<i>Men's Residence Halls</i>	<i>Date of Initial Occupancy</i>	<i>Fall 1976 Occupancy</i>	<i>Capacity</i>
Hill	1961	174	168
Lipscomb	1961	168	162
McWhorter	1967	165	167
Milledge	1921	154	154
Morris	1957	147	148
Myers*	1953	342	319
Payne	1939	203	203
Reed*	1953	236	236
Russell	1967	1,042	1,000
Sub-Total 8 Buildings		2,631	2,557
TOTAL 16 Buildings		5,788	5,751

* Joint Occupancy

CONT'D: STUDENT HOUSING

MARRIED STUDENT HOUSING

<i>Building</i>	<i>Date of Initial Occupancy</i>	<i>Fall 1976 Occupancy</i>	<i>Capacity</i>
University Village A	1964	28	28
University Village B	1964	24	24
University Village C	1964	24	24
University Village D	1964	29	29
University Village E	1966	28	28
University Village F	1966	24	24
University Village G	1966	24	24
University Village H	1966	24	24
University Village J	1966	36	36
University Village K	1966	34	34
University Village L	1966	30	30
University Village M	1973	36	36
University Village N	1973	36	36
University Village P	1973	42	42
University Village Q	1973	42	42
University Village R	1973	42	42
University Village S	1973	42	42
Total		545	545

UNIVERSITY OWNED SORORITY AND FRATERNITY HOUSES

<i>University Owned Sorority Houses</i>	<i>Fall 1976 Occupancy</i>	<i>Capacity</i>
Alpha Chi Omega	66	66
Delta Phi Epsilon	55	50
Sigma Delta Tau	44	44
Subtotal 3 Buildings	165	160

<i>University Owned Fraternity Houses</i>	<i>Fall 1976 Occupancy</i>	<i>Capacity</i>
Alpha Epsilon Pi	30	35
Alpha Tau Omega	40	45
Chi Phi	25	24
Chi Psi	31	31
Kappa Alpha	35	35
Kappa Sigma	35	50
Phi Delta Theta	35	35
Delta Chi	20	20
Pi Kappa Alpha	34	44
Sigma Chi	23	29
Sigma Nu	16	30
Tau Epsilon Phi	28	27
Subtotal 12 Buildings	352	405
TOTAL 15 Buildings	517	565

CONT'D: STUDENT HOUSING

SORORITY AND FRATERNITY OWNED HOUSES

<i>Sorority Owned Houses</i>		<i>Fall 1976 Occupancy</i>	<i>Capacity</i>
	Alpha Delta Pi	61	63
	Alpha Gamma Delta	46	50
	Alpha Omicron Pi	54	54
	Chi Omega	75	75
	Delta Delta Delta	50	50
	Delta Gamma	66	66
	Kappa Alpha Theta	55	54
	Kappa Delta	61	54
	Kappa Kappa Gamma	64	64
	Phi Mu	73	78
	Pi Beta Phi	53	60
	Sigma Kappa	37	40
	Zeta Tau Alpha	64	64
Subtotal	13 Buildings	759	772
<i>Fraternity Owned Houses</i>		<i>Fall 1976 Occupancy</i>	<i>Capacity</i>
	Alpha Gamma Rho	42	45
	Delta Tau Delta	17	27
	Lambda Chi Alpha	54	54
	Phi Gamma Delta	34	32
	Phi Kappa Psi	25	21
	Phi Kappa Tau	28	28
	Phi Kappa Theta	13	21
	Pi Kappa Phi	12	13
	Sigma Alpha Epsilon	26	30
	Sigma Phi Epsilon	32	34
	Sigma Pi	6	6
	Tau Kappa Epsilon	9	9
	Theta Chi	30	28
	Zeta Beta Tau	11	11
Subtotal	14 Buildings	339	359
<i>Professional Fraternity Owned Houses</i>		<i>Fall 1976 Occupancy</i>	<i>Capacity</i>
	Alpha Psi	12	12
	Omega Tau Sigma	18	18
	Kappa Psi	6	6
Subtotal	3 Buildings	36	36
TOTAL	30 Buildings	1,134	1,167

CONT'D: STUDENT HOUSING

STUDENT RESIDENCES SUMMARY

<i>Type of Residence</i>	<i>Number</i>	<i>Fall 1976 Occupancy</i>	<i>Capacity</i>
Women's Residence Halls	8	3,157	3,194
Men's Residence Halls	8	2,631	2,557
Subtotal	16	5,788	5,751
Married Student Housing	17	545 Units	545 Units
University Owned Sorority Houses	3	165	160
Sorority Owned Houses	13	759	772
Subtotal Sorority Houses	16	924	932
University Owned Fraternity Houses	12	352	405
Fraternity Owned Houses	14	339	359
Professional Fraternity Owned Houses	3	36	36
Subtotal Fraternity Houses	29	727	800
TOTAL	78	7,984	8,028
<i>Type of Residence</i>			
Women's Student Housing	24	4,081	4,126
Men's Student Housing	37	3,358	3,357
Married Student Housing	17	545	545
TOTAL	78	7,984	8,028

Source: Office of Institutional Research and Planning

UNIVERSITY HEALTH SERVICE ACTIVITY

	1974-75	1975-76 *
<i>Outpatient Services</i>		
Number of Individuals Seen as Outpatients	18,152	18,020
Total Student Visits for Outpatient Services	84,170	81,702
Total Student Visits for Physical Health	77,643	76,002
Visits Treated Primarily by Physicians	34,362	32,487
Visits Treated Primarily by Nursing	26,763	22,986
Visits to Immediate Care	2,950	5,548
Visits to Dermatology Clinic	1,223	885
Visits to Women's Health Lecture	470	580
Visits to High Blood Pressure Clinic	392	568
Visits to Allergy/Immunization Clinic	3,111	3,004
Visits for Directed Self Care	5,177	6,302
Visits to Physical Therapist	2,341	2,894
Visits to Diet Clinic	854	748
Total Student Visits to Mental Health	6,527	5,700
Student Visits for personal, vocational, educational, pre-marital, and marital, social, and financial counseling on individual or couple basis	5,480	5,133
Student Participation in psychotherapy groups, sensitivity and growth groups, and encounter and marathon sessions	1,047	567
<i>Inpatient Services</i>		
Total Students Admitted to Hospital	217	153
Total Students Admitted to Intermediate Care	450	715
Total Inpatients Admitted	667	868
<i>Auxillary Services</i>		
Total Prescriptions Filled by Pharmacy	61,841	56,070
Total Laboratory Procedures Processed	61,634	58,335
Total X-ray Films Taken	8,034	6,978

*Statistics based on projection of June 30, 1976

Source: Office of Director of the University Health Service

GEORGIA ATHLETIC ASSOCIATION
BOARD OF DIRECTORS

Chairman	Fred C. Davison
Treasurer	Allan Barber
Faculty Chairman	Reid Parker
Athletic Director	Joel Eaves
Alumni Members	Lee Daniel
	M.E. Kilpatrick
	Wyckliff A. Knox, Jr.
	Donald M. Leebern, Jr.
	T.H. Milner, Jr.
	Lamar Travis Wansley
	Frank W. Seiler
Emeritus Member	George T. Fesperman
Faculty Members	Mark Hanna
	W.E. Hudson
	Joe LaRocca
	Clifford Lewis
	Percy B. Yeargan
Student Member	Gordon Smith

Source: Sports Information Director

GEORGIA HEAD COACHES

MEN

Athletic Director	Joel Eaves
Baseball	Roy Umstattd
Basketball	John Guthrie
Football	Vince Dooley
Golf	Dick Copas
Gymnastics	Lee Cunningham
Rifle	David Grayson
Swimming	Pete Scholle
Tennis	Dan Magill
Track	Lewis Gainey
Wrestling	George Reid

WOMEN

Coordinator of Women's Athletics	Liz Murphy
Basketball	Elsa Heimerer
Golf	Liz Murphy
Gymnastics	Elizabeth Long
Swimming	Joe McEvoy
Tennis	Jane Kuykendoll
Volleyball	Sue McDonald

Source: Sports Information Director

**ATHLETES AT THE UNIVERSITY OF GEORGIA
Fall 1976**

<i>Sport</i>	<i>Scholarship</i>		<i>Non-Scholarship</i>		<i>Total</i>	
	<i>Men</i>	<i>Women</i>	<i>Men</i>	<i>Women</i>	<i>Men</i>	<i>Women</i>
Baseball	25	N/A	12	N/A	37	N/A
Basketball	15	8	3	4	18	12
Football	125	N/A	64	N/A	189	N/A
Golf	9	6	3	6	12	12
Gymnastics	10	9	12	1	22	10
Rifle	0	0	6	4	6	4
Swimming	22	6	8	13	30	19
Tennis	7	8	3	4	10	12
Track	21	N/A	9	N/A	30	N/A
Wrestling	23	N/A	12	N/A	35	N/A
Volleyball	N/A	8	N/A	2	N/A	10
Total	257	45	132	34	389	79

N/A Not Applicable
 Source: Athletic Director
 Coordinator of Women's Athletics

ACADEMICS PERTAINING TO MEN ATHLETES ON SCHOLARSHIP

<i>Quarter</i>	<i>Number on Scholarship</i>	<i>Number with 3.0 or over</i>	<i>Number on Dean's List</i>
Fall 1975	257	60	20
Winter 1976	254	72	16
Spring 1976	253	88	21

Source: Athletic Director

ACADEMICS PERTAINING TO WOMEN STUDENT/ATHLETES

<i>Quarter</i>	<i>Number of Participants</i>	<i>Number with 3.0 or over</i>	<i>Number on Dean's List</i>
Fall 1975	87	53	24
Winter 1976	85	57	20
Spring 1976	71	50	18

Source: Coordinator of Women's Athletics

SOUTHEASTERN CONFERENCE CHAMPIONSHIPS WON BY GEORGIA
(Since Inception of Southeastern Conference, 1933)

<i>SPORT</i>	<i>YEARS</i>
Baseball	1933,1953,1954
Track	1937
Golf	1941,1950,1951,1952,1957,1958,1959,1961, 1962,1963,1964,1965,1969,1970,1971,1972
Football	1942,1946,1948,1959,1966,1968,1976
Swimming	1951,1952,1955
Tennis	1971,1972,1973,1974,1975
Rifle*	1972

* Southern Collegiate Riflery Association Championship. This Association is made up of the ten Southeastern Conference Teams.

Source: Sports Information Director

GEORGIA ATHLETIC TRAINING FACILITIES

<i>Coliseum</i>	Facilities located within the Coliseum include: <ol style="list-style-type: none"> 1. main training room with steam bath 2. small training room 3. weight room 4. theatre-style meeting room 5. dressing facilities for football, basketball, track, baseball, wrestling, plus several dressing rooms for visiting teams.
<i>Henry Feild Tennis Stadium</i>	Dressing quarters for tennis team
<i>Stegeman Hall</i>	Dressing quarters for swimming team
<i>Practice Fields</i>	Four practice football fields (all other teams use the facilities in which they play to practice with the exception of the wrestling team which has a wrestling room located in the Coliseum).

Source: Sports Information Director

FACULTY AND STAFF

FACULTY AND ALLIED PROFESSIONAL STAFF BY RANK AND FUNCTION
(Total University)
June 30, 1976

	<i>Professor</i>	<i>Associate Professor</i>	<i>Assistant Professor</i>	<i>Instructor</i>	<i>Sub Total</i>	<i>Lecturer</i>	<i>Research¹ Associate</i>	<i>Service² Associate</i>	<i>Librarian</i>	<i>Other³ Allied</i>	<i>Total</i>
Administration	12	10	3	2	27	1	4	0	0	36	68
Student Welfare	2	2	10	9	23	2	0	0	0	13	38
Libraries	0	1	9	29	39	0	0	0	14	4	57
Instruction	408	360	524	192	1,484	50	101	2	0	19	1,656
General Research	4	4	0	0	8	0	28	0	0	1	37
Agricultural Experiment Station	31	32	65	2	130	0	16	0	0	0	146
Cooperative Extension Service	14	29	76	8	127	0	0	12	0	0	139
Extension and Public Service	2	5	9	7	23	2	1	12	0	31	69
Total	473	443	696	249	1,861	55	150	26	14	104	2,210

FACULTY AND ALLIED PROFESSIONAL STAFF BY RANK AND FUNCTION
(Total University)
September 30, 1976

	<i>Professor</i>	<i>Associate Professor</i>	<i>Assistant Professor</i>	<i>Instructor</i>	<i>Sub Total</i>	<i>Lecturer</i>	<i>Research¹ Associate</i>	<i>Service² Associate</i>	<i>Librarian</i>	<i>Other³ Allied</i>	<i>Total</i>
Administration	9	10	3	2	24	1	2	0	0	39	66
Student Welfare	2	2	7	7	18	2	0	0	0	18	38
Libraries	0	1	9	24	34	0	0	0	22	4	60
Instruction	410	371	504	201	1,486	60	91	4	0	20	1,661
General Research	3	4	0	0	7	0	23	0	0	1	31
Agricultural Experiment Station	32	34	56	1	123	0	15	0	0	0	138
Cooperative Extension Service	16	32	71	7	126	0	0	12	0	0	138
Extension and Public Service	2	5	9	6	22	2	2	14	0	29	69
Total	474	459	659	248	1,840	65	133	30	22	111	2,201

¹ Agricultural Research Scientists, Assistant Research Scientists, Associate Research Scientists, Postdoctoral Associates, Research Associates

² Extension Associates, Public Service Associates, Public Service Representatives

³ Administrative Staff, Clinical Pharmacy Associates, Physicians

Source: Office of Institutional Research and Planning

SCHEDULE OF FACULTY SALARIES
(Based on Academic Year)

<i>Rank</i>	<i>Salaries Without Supplement 1976-77</i>	<i>Salaries With Supplement 1976-77</i>
Professor	\$ 23,342	\$ 23,816
Associate Professor	17,749	17,780
Assistant Professor	14,645	14,651
Instructor	11,696	11,696
All Ranks	17,603	17,744

Source: Resident Instruction Original Budget

TENURE, GRADUATE FACULTY MEMBERSHIP, AND SPECIAL CHAIRS BY RANK
September 30, 1976

<i>Faculty</i>	<i>Total Faculty</i>		<i>Tenure</i>		<i>Graduate Faculty</i>		<i>Special Chair</i>	
	<i>Number</i>	<i>% of Total</i>	<i>Number</i>	<i>% of Total</i>	<i>Number</i>	<i>% of Total</i>	<i>Number</i>	<i>% of Total</i>
Professor	474	26 %	449	47 %	318	57 %	48	100 %
Associate Professor	459	25	431	45	195	35	0	0
Assistant Professor	659	36	74	8	47	8	0	0
Instructor	248	13	0	0	0	0	0	0
Total	1,840	100 %	954	100 %	560	100 %	48	100 %

Source: Office of Institutional Research and Planning

**HIGHEST EARNED DEGREES OF FACULTY AND ALLIED PROFESSIONAL STAFF BY RANK
(Total University)
September 30, 1976**

	<i>Doctorate</i>		<i>Masters</i>		<i>Professional</i>		<i>Baccalaureate</i>		<i>None</i>		<i>Total</i>	
	<i>No.</i>	<i>%</i>	<i>No.</i>	<i>%</i>	<i>No.</i>	<i>%</i>	<i>No.</i>	<i>%</i>	<i>No.</i>	<i>%</i>	<i>No.</i>	<i>%</i>
Professor	434	92%	28	6%	10	2%	2	*%	0	0%	474	100%
Associate Professor	384	84	53	11	14	3	8	2	0	0	459	100
Assistant Professor	449	68	175	27	23	3	11	2	1	*	659	100
Instructor	22	9	190	76	10	4	24	10	2	1	248	100
Subtotal	1,289	70	446	24	57	3	45	3	3	*	1,840	100
Lecturer	22	34%	28	43%	5	8%	10	15%	0	0%	65	100%
Research Associate ¹	116	87	12	9	2	2	3	2	0	0	133	100
Service Associate ²	4	13	23	77	1	3	2	7	0	0	30	100
Librarian	1	5	20	91	0	0	1	4	0	0	22	100
Other Allied ³	17	15	47	42	14	13	28	25	5	5	111	100
Subtotal	160	44	130	36	22	6	44	12	5	2	361	100
TOTAL	1,449	66%	576	26%	79	4%	89	4%	8	*%	2,201	100%

¹ Agricultural Research Scientists, Assistant Research Scientists, Associate Research Scientists, Postdoctoral Associates, Research Associates

² Extension Associates, Public Service Associates, Public Service Representatives

³ Administrative Staff, Clinical Pharmacy Associates, Physician

* Less than one percent

Source: Office of Institutional Research and Planning

TENURED AND NON TENURED FACULTY BY AGE
September 30, 1976

<i>Age</i>	<i>With Tenure</i>		<i>Without Tenure</i>		<i>Total</i>	
	<i>No.</i>	<i>%</i>	<i>No.</i>	<i>%</i>	<i>No.</i>	<i>%</i>
20-29	1	1 %	137	99 %	138	100 %
30-39	154	25	461	75	615	100
40-49	355	66	185	34	540	100
50-59	335	80	86	20	421	100
60-67	109	87	17	13	126	100
Total	954	52 %	886	48 %	1,840	100 %

Source: Office of Institutional Research and Planning

FACULTY BY LENGTH OF SERVICE
September 30, 1976

<i>Years</i>	<i>No.</i>	<i>%</i>	<i>Years</i>	<i>No.</i>	<i>%</i>
0-1	154	8 %	8-9	152	8 %
1-2	128	7	9-10	158	9
2-3	110	6	10-20	439	24
3-4	105	6	20-30	152	8
4-5	113	6	30-40	26	2
5-6	75	4	Over 40	6	*
6-7	99	5			
7-8	123	7	Total	1,840	100 %

* Less than one percent

Source: Office of Institutional Research and Planning

UNIVERSITY EMPLOYEES BY OCCUPATIONAL CLASSIFICATION*

<i>Occupational Classification</i>	<i>Employees As Of 11/01/76</i>			<i>New Employees 11/75 - 10/76</i>			<i>Percent New Employees</i>
	<i>Full-Time</i>	<i>Part-Time</i>	<i>Total</i>	<i>Full-Time</i>	<i>Part-Time</i>	<i>Total</i>	
Executive/Administrative/Managerial	454		454	10		10	2.20 %
Instructional Faculty	1,727	58	1,785	179	23	202	11.32
Professional	897	18	915	150	6	156	17.05
Secretarial/Clerical	1,533	113	1,646	403	36	439	26.67
Technical/Paraprofessional	594	31	625	145	16	161	25.76
Skilled Crafts	260		260	16		16	6.15
Service/Maintenance	1,262	33	1,295	236	12	248	19.15
TOTAL	6,727	253	6,980	1,139	93	1,232	17.65 %

*Office of Civil Rights Classifications

Source: Institutional Research and Planning

FINANCIAL INFORMATION

THE UNIVERSITY OF GEORGIA
SOURCES OF REVENUE
July 1, 1975 - June 30, 1976

<i>Sources</i>	<i>Revenue</i>	<i>Percentage of Total</i>
From the State of Georgia		
For General Operations	\$ 50,983,167	%
For Agricultural Experiment Station	9,430,970	
For Cooperative Extension Service	8,315,990	
For Marine Resources Extension Service	379,938	
Total State of Georgia	69,110,065	49.8
From the Counties of Georgia		
For Cooperative Extension Service	2,350,198	1.7
From Federal Appropriations		
For Teaching	170,638	
For Agricultural Experiment Station	2,228,337	
For Cooperative Extension Service	3,763,351	
Total Federal Appropriations	6,162,326	4.4
From Student Fees	15,646,253	11.3
From Sales, Services, and Miscellaneous Sources		
of Teaching and Service Departments	4,680,962	
of Agricultural Experiment Station	1,647,526	
of Cooperative Extension Service	3,444	
of Marine Resources Extension Service	35,340	
Total Sales, Services, and Misc. Sources	6,367,272	4.6
From Gifts, Grants, and Research Contracts		
*(State, Federal, and Private)	24,585,046	17.7
From Auxiliary Enterprises	14,405,014	10.4
From Endowment	136,095	0.1
Total	\$ 138,762,269	100.0%

* Includes Student Aid

Source: Office of the Vice President for Business and Finance

THE UNIVERSITY OF GEORGIA
EXPENDITURES BY BUDGETARY FUNCTION
July 1, 1975 - June 30, 1976

<i>Budgetary Function</i>	<i>Expenditures</i>	<i>Percentage of Total</i>
Instruction and Departmental Research	\$ 42,672,636	31.1 %
Organized Activities Related to Educational Departments	1,189,620	0.9
General Administration and General Expenses	9,891,685	7.2
Library	4,169,347	3.0
Operations and Maintenance of Instructional Plant Facilities	8,653,515	6.3
Organized Research		
Agricultural Experiment Station	15,421,289	11.3
Other	12,715,875	9.3
Extension and Public Services		
Cooperative Extension Service	18,207,549	13.3
Marine Resources Extension Service	423,941	0.3
Other	9,076,911	6.6
Student Aid	1,930,712	1.4
Auxiliary Enterprises	12,692,327	9.3
Total	\$ 137,045,407	100.0 %

Source: Office of the Vice President for Business and Finance

THE UNIVERSITY OF GEORGIA
STATE OF GEORGIA APPROPRIATIONS
1960-61 — 1976-77

<i>Fiscal Year</i>	<i>Resident Instruction</i>	<i>Agricultural Experiment Station</i>	<i>Cooperative Extension Service</i>	<i>Continuing Education</i>	<i>Rural Development Center</i>	<i>Marine Resources Extension Service</i>	<i>TOTAL</i>	<i>Percent Increase From Previous Year</i>
1960-61	\$ 5,108,000	\$ 1,898,000	\$ 1,669,000	\$ 293,000	\$	\$	\$ 8,968,000	%
1961-62	5,500,080	2,037,000	1,820,000	326,000			9,683,080	8.0
1962-63	6,214,327	2,172,500	2,127,000	395,500			10,909,327	12.6
1963-64	7,476,951	2,245,264	2,213,602	436,000			12,371,817	13.4
1964-65	8,944,261	2,800,111	2,686,601	561,000			14,991,973	21.1
1965-66	11,206,998	2,748,577	2,919,889	656,000			17,531,464	16.9
1966-67	13,181,671	3,000,314	3,224,929	742,000			20,148,914	14.9
1967-68	26,021,985	3,545,000	3,870,000	1,010,500			34,447,485	71.0
1968-69	29,815,319	3,811,000	4,220,000	913,000			38,759,319	12.7
1969-70	31,692,460	4,396,000	4,754,000	1,148,000			41,990,460	8.3
1970-71	36,049,661	5,088,189	4,958,640	1,267,790			47,364,280	12.8
1971-72	37,380,218	4,838,497	4,899,658	1,189,252	313,348	163,129	48,784,102	3.0
1972-73	41,579,699	6,401,541	5,787,000	1,295,000	334,000	175,000	55,572,240	13.9
1973-74	48,873,806	8,011,000	7,490,041	*	*	264,000	64,638,847	16.3
1974-75	52,075,827	8,863,780	8,240,044	*	*	323,664	69,503,315	7.5
1975-76	50,983,167	9,430,970	8,315,990	*	*	379,938	69,110,065	- 0.6
1976-77**	55,348,400	9,663,593	8,916,636	*	*	388,090	74,316,719	7.5

* Continuing Education and Rural Development Center are budgeted within Resident Instruction and Cooperative Extension Service respectively effective July 1, 1973.

**Original Budget for the year ending June 30, 1977.

Source: Office of the Vice President for Business and Finance.

**THE UNIVERSITY OF GEORGIA
SOURCES OF UNRESTRICTED REVENUE
FOR RESIDENT INSTRUCTION*
1960-61 – 1976-77**

<i>Fiscal Year</i>	<i>State Appropriation</i>		<i>Student Fees</i>		<i>Other Sources</i>		<i>Total Amount</i>
	<i>Amount</i>	<i>Percent</i>	<i>Amount</i>	<i>Percent</i>	<i>Amount</i>	<i>Percent</i>	
1960-61	\$ 5,401,000	68.87 %	\$ 2,213,443	28.22 %	\$ 228,018	2.91 %	\$ 7,842,461
1961-62	5,826,880	60.52	3,062,194	31.80	739,868	7.68	9,628,942
1962-63	6,609,827	61.81	3,548,792	33.19	533,650	5.00	10,692,269
1963-64	7,912,951	63.11	4,116,222	32.83	509,731	4.06	12,538,904
1964-65	9,505,261	65.43	4,326,885	29.79	694,569	4.78	14,526,715
1965-66	11,862,998	67.36	4,843,256	27.50	904,393	5.14	17,610,647
1966-67	13,923,671	61.15	6,904,795	30.32	1,943,398	8.53	22,771,864
1967-68	27,032,485	71.94	7,517,636	20.01	3,025,227	8.05	37,575,348
1968-69	30,728,319	73.86	8,106,307	19.49	2,767,541	6.65	41,602,167
1969-70	32,840,460	69.53	11,012,883	23.32	3,378,410	7.15	47,231,753
1970-71	37,317,451	72.11	11,149,549	21.54	3,285,331	6.35	51,752,331
1971-72	38,569,470	71.49	11,554,974	21.42	3,826,914	7.09	53,951,358
1972-73	42,874,699	71.34	13,110,558	21.81	4,116,478	6.85	60,101,735
1973-74	48,873,806	74.24	12,788,004	19.43	4,169,895	6.33	65,831,705
1974-75	52,075,827	74.09	13,273,941	18.88	4,942,159	7.03	70,291,927
1975-76	50,983,167	71.03	15,646,253	21.80	5,143,619	7.17	71,773,039
1976-77**	55,348,400	72.87	15,958,748	21.01	4,652,006	6.12	75,959,154

* Includes Continuing Education which was separately budgeted until July 1, 1973.

**Original Budget for the year ending June 30, 1977

Source: Office of the Vice President for Business and Finance

**SOURCE OF INSTRUCTIONAL INSTITUTE FUNDS FROM CONTRACTS AND GRANTS BY SPONSORING AGENCY
FY 1975-1976**

06

BUDGETARY UNIT	OE	HRA	OHD	NSF	ADAMHA	OTHER FEDERAL AGENCIES	FEDERAL TOTAL*	STATE OF GA	OTHER	TOTAL
Agriculture	\$	\$	\$	\$	\$	\$	\$	\$	\$ 9,560	\$ 9,560
Arts and Sciences	13,519			53,284	30,833	57,830	155,466		9,000	164,466
Education	908,516	243,730	462,672	199,313		27,049	1,841,280	46,197	1,351	1,888,828
Institute of Ecology				5,413			5,413			5,413
Institute of Government	32,000					42,200	74,200			74,200
Journalism									36,292	36,292
Pharmacy		240,667					240,667			240,667
Social Work					44,451	51,422	95,873			95,873
Special Studies Division									3,150	3,150
University Libraries						7,310	7,310			7,310
Veterinary Medicine		209,692				15,000	224,692			224,692
Total	\$ 954,035	\$ 694,089	\$ 462,672	\$ 258,010	\$ 75,284	\$ 200,811	\$ 2,644,901	\$ 46,197	\$ 59,353	\$ 2,750,451
% of Grand Total	34.7%	25.2%	16.8%	9.4%	2.7%	7.3%	96.2%	1.7%	2.1%	100.0%

* Federal funds provided to state agencies for agency distribution as grants within the state have been tabulated as federal in nature.

- 1. OE Office of Education, U.S. Department of Health, Education and Welfare
- 2. HRA Health Resources Administration, U. S. Department of Health, Education and Welfare
- 3. OHD Office of Human Development, U. S. Department of Health, Education and Welfare
- 4. NSF National Science Foundation
- 5. ADAMHA Alcohol, Drug Abuse and Mental Health Administration, U. S. Dept. of Health, Education and Welfare
- 6. OTHER FEDERAL AGENCIES Federal Agencies other than the five listed
- 7. STATE OF GEORGIA Agencies of the State Government
- 8. OTHER Agencies of Corporations and Foundations

Source: Office of Instructional Institutes, Graduate School

COMPARISON OF BUDGETED RESEARCH FUNDS FROM ALL SOURCES

<i>Fiscal Year</i>	<i>Outside Funds</i>	<i>% of Total</i>	<i>State Funds</i>	<i>% of Total</i>	<i>Total</i>
1969-70	\$ 12,924,642	48%	\$ 13,762,750	52%	\$ 26,687,392
1970-71	10,814,585	41	15,713,902	59	26,528,487
1971-72	11,139,096	43	14,719,212	57	25,858,308
1972-73	11,600,472	41	16,979,406	59	28,579,878
1973-74	12,200,317	39	18,942,322	61	31,142,639
1974-75	13,854,245	41	20,237,485	59	34,091,730
1975-76	13,108,218	39	20,633,096	61	33,741,314

Source: Office of the Vice President for Research

**COMPARISON OF BUDGETED SERVICES FUNDS FROM ALL SOURCES
Resident Instruction***

<i>Fiscal Year</i>	<i>Outside Funds</i>	<i>% of Total</i>	<i>State Funds</i>	<i>% of Total</i>	<i>Total</i>
1969-70	\$ 1,246,933	31%	\$ 2,835,258	69%	\$ 4,082,191
1970-71	1,529,409	33	3,167,542	67	4,696,951
1971-72	2,800,507	48	3,044,079	52	5,844,586
1972-73	3,330,582	51	3,196,881	49	6,527,463
1973-74	4,203,192	55	3,430,250	45	7,633,442
1974-75	4,389,310	57	3,338,337	43	7,727,647
1975-76	5,145,831	61	3,243,653	39	8,389,484

* Includes amounts for Continuing Education both prior to and after inclusion in Resident Instruction Budget

Source: Office of the Vice President for Services

**SOURCE OF ALL RESEARCH FUNDS
FY 1975-1976**

<i>Budgetary Unit</i>	<i>State Appropriated Funds</i>	<i>Research Funds From Sales</i>	<i>Research Grants and Contracts</i>	<i>Total</i>
GENERAL RESEARCH				
Agriculture	\$ 261,840	\$	\$ 115,049	\$ 376,889
Arts and Sciences	4,094,792		3,760,382	7,855,174
Business Administration	507,746		139,220	646,966
Education	959,000		243,012	1,202,012
Environmental Design	4,950			4,950
Forest Resources	75,423		32,350	107,773
Graduate School	167,746			167,746
Home Economics	142,130			142,130
Journalism	135,954			135,954
Law	49,417		500	49,917
Pharmacy	168,587		84,847	253,434
Social Work	30,150		140,000	170,150
Vice President for Research	219,474			219,474
General Research Administration	39,421		95,487	134,908
Central Research Stores		106,217		106,217
Computer Center			460,916	460,916
Veterinary Medicine	681,161		740,689	1,421,850

Cont'd: SOURCE OF ALL RESEARCH FUNDS : FY 1975-1976

<i>Budgetary Unit</i>	<i>State Appropriated Funds</i>	<i>Research Funds From Sales</i>	<i>Research Grants and Contracts</i>	<i>Total</i>
Institute of Ecology	\$ 67,312	\$	\$ 1,839,111	\$ 1,906,423
Institute of Behavioral Research	107,411		110,222	217,633
Marine Institute	256,129		243,908	500,037
Natural Resources Institute	147,816		759,299	907,115
Services Shop	298,734	120,766		419,500
Geochronology Laboratory	43,949	61,051		105,000
Division of Research	84,936			84,936
College of Business Administration				
Institutional Research and Planning	266,012			266,012
Post Doctoral Training Program	396,810			396,810
Miscellaneous General Research	59,666		15,815	75,481
Total General Research	\$ 9,266,566	\$ 288,034	\$ 8,780,807	\$ 18,335,407
AGRICULTURAL EXPERIMENT STATIONS	\$ 9,430,970	\$ 1,647,526	\$ 4,327,411 *	\$ 15,405,907
Grand Total	\$ 18,697,536	\$ 1,935,560	\$13,108,218	\$ 33,741,314
% of Grand Total	55%	6%	39%	100%

* Includes \$2,485,030 Federal Hatch and McIntire-Stennis Funds

Source: Office of the Vice President for Research

SOURCE OF GRANT AND CONTRACT RESEARCH FUNDS
FY 1975-1976

<i>Budgetary Unit</i>	<i>Federal</i>	<i>State</i>	<i>Other</i>	<i>Total</i>
GENERAL RESEARCH				
Arts and Sciences	\$ 3,404,777	\$ 8,000	\$ 347,605	\$ 3,760,382
Business Administration	108,407		30,813	139,220
Education	242,012		1,000	243,012
Forest Resources	22,350	10,000		32,350
Pharmacy	37,152		47,695	84,847
Social Work	140,000			140,000
Computer Center	456,882		4,034	460,916
Veterinary Medicine	427,639	125,000	188,050	740,689
Institute of Ecology	1,818,611		20,500	1,839,111
Institute for Behavioral Research	103,347		6,875	110,222
Marine Institute	19,199	5,000	219,709	243,908
Natural Resources Institute	745,239		14,060	759,299
General Research Administration	84,800		10,687	95,487
Agriculture	113,449		1,600	115,049
Institute of Community and Area Development	15,815			15,815
School of Law			500	500

Cont'd: SOURCE OF GRANT AND CONTRACT RESEARCH FUNDS: 1975-1976

<i>Budgetary Unit</i>	<i>Federal</i>	<i>State</i>	<i>Other</i>	<i>Total</i>
Total General Research	\$ 7,739,679	\$ 148,000	\$ 893,128	\$ 8,780,807
AGRICULTURAL EXPERIMENT STATIONS	\$ 3,251,796*	\$ 721,968	\$ 353,647	\$ 4,327,411
Grand Total	\$ 10,991,475	\$ 869,968	\$ 1,246,775	\$ 13,108,218
% of Grand Total	84%	7%	9%	100%

* Includes \$2,485,030 Federal Hatch Act and McIntire-Stennis Funds

Source: Office of the Vice President for Research

**SOURCE OF RESEARCH FUNDS FROM GRANTS AND CONTRACTS BY AGENCY
FY 1975-1976**

<i>Budgetary Unit</i>	<i>HEW</i>	<i>NSF</i>	<i>ERDA</i>	<i>USEPA</i>	<i>DOD & NASA</i>	<i>USDA</i>	<i>OTHER</i>	<i>TOTAL</i>
GENERAL RESEARCH								
Agriculture	\$ 113,449	\$	\$	\$	\$	\$	\$ 1,600	\$ 115,049
Arts and Sciences	1,575,077	906,000	449,036	153,155	225,827	75,016	376,271	3,760,382
Business Administration							139,220	139,220
Education	242,012						1,000	243,012
Forest Resources		2,100	18,000				12,250	32,350
Journalism								
Pharmacy					37,152		47,695	84,847
Social Work	140,000							140,000
General Research Administration	65,455			18,345			11,687	95,487
Computer Center		88,874			368,008		4,034	460,916
Veterinary Medicine	161,485				81,156		498,048	740,689
Institute of Ecology		535,600	1,271,711				31,800	1,839,111
Institute for Behavioral Research	86,347					17,000	6,875	110,222
Marine Institute					9,250		234,658	243,908
Natural Resources Institute				2,400	159,839		597,060	759,299

Cont'd: SOURCE OF RESEARCH FUNDS FROM GRANTS AND CONTRACTS BY AGENCY: FY 1975-1976

<i>Budgetary Unit</i>	<i>HEW</i>	<i>NSF</i>	<i>ERDA</i>	<i>USEPA</i>	<i>DOD & NASA</i>	<i>USDA</i>	<i>OTHER</i>	<i>TOTAL</i>
MISCELLANEOUS GENERAL RESEARCH	\$	\$	\$	\$	\$	\$	\$ 16,315	\$ 16,315
TOTAL GENERAL RESEARCH	\$ 2,383,825	\$ 1,532,574	\$ 1,738,747	\$ 173,900	\$ 881,232	\$ 92,016	\$ 1,978,513	\$ 8,780,807
AGRICULTURAL EXPERIMENT STATIONS			\$ 19,479	\$ 181	\$ 5,338	\$ 3,226,798	\$ 1,075,615	\$ 4,327,411*
Grand Total	\$ 2,383,825	\$ 1,532,574	\$ 1,758,226	\$ 174,081	\$ 886,570	\$ 3,318,814	\$ 3,054,128	\$ 13,108,218
% of Grand Total	18%	12%	13%	1%	7%	25%	24%	100%

*Includes \$2,485,030 Federal Hatch and McIntire-Stennis Funds

HEW U.S. Department of Health, Education & Welfare, including (PHS) Public Health Service, (NIH) National Institute of Health, (OE) Office of Education, (SRA) Social & Rehabilitation Service, (WA) Welfare Administration, (OHD) Office of Human Development, (NIE) National Institute of Education, (FDA) Food & Drug Administration

NSF National Science Foundation

ERDA Energy Research & Development Administration

USEPA U.S. Environmental Protecting Agency

NASA National Aeronautics and Space Administration

DOD Department of Defense, including (AF) Air Force, (CD) Civil Defense, (ONR) Office of Naval Research, U.S. Army

USDA U.S. Department of Agriculture

Other States, Foundations, Private Agencies and other Federal agencies

Source: Office of the Vice President for Research

**SOURCE OF ALL SERVICES FUNDS
FY1975-1976**

<i>Budgetary Unit</i>	<i>State Appropriated Funds</i>	<i>Services Funds From Sales</i>	<i>Services Grants And Contracts</i>	<i>Total</i>
SERVICES (RESIDENT INSTRUCTION)				
Arts and Sciences	\$ 8,302	\$	\$ 603,882	\$ 612,184
Business Administration	185,306		313,317	498,623
Education	95,435		531,273	626,708
Home Economics			70,670	70,670
Law	64,519	61,325	197,377	323,221
Institute of Government	511,301	33,237	412,792	957,330
Pharmacy	18,485			18,485
Social Work			623,137	623,137
Environmental Design			5,400	5,400
Agriculture	89,174		124,556	213,730
Vice President for Services	208,404			208,404
Institute of Higher Education	178,510		7,075	185,585
Georgia Center	1,307,632		1,098,848	2,406,480
(Auxiliary not included)				
Veterinary Medicine	13,816		533,075	546,891
University Press	157,764	260,737	11,048	429,549

Cont'd: SOURCE OF ALL SERVICES FUNDS: FY 1975-1976

<i>Budgetary Unit</i>	<i>State Appropriated Funds</i>	<i>Services Funds From Sales</i>	<i>Services Grants And Contracts</i>	<i>Total</i>
Journalism	\$ 3,286	\$	\$	\$ 3,286
Institute of Community and Area Development	401,719	6,964	86,784	495,467
Department of Public Safety			164,334	164,334
Total Services (in Resident Instruction)	\$ 3,243,653	\$ 362,263	\$ 4,783,568	\$ 8,389,484
MARINE RESOURCES EXTENSION SERVICE	\$ 378,688		\$ 10,000	\$ 388,688
COOPERATIVE EXTENSION SERVICE	\$ 8,315,990		\$ 7,544,316*	\$ 15,860,306
Grand Total	\$ 11,938,331	\$ 362,263	\$ 12,337,884	\$ 24,638,478
% of Grand Total	48.5%	1.5%	50.0%	100%

* Includes 3,763,351 Federal Funds (does not include County Funds)

Source: Office of the Vice President for Services

RESEARCH, SERVICE, AND AUXILIARY UNITS

AGRICULTURAL EXPERIMENT STATIONS

The responsibility of the Agricultural Experiment Stations is to seek, and verify through scientific research, new knowledge concerning agricultural pursuits in the broadest sense of the word. Research projects are conducted in agricultural economics, agricultural engineering, agronomy, animal and dairy science, entomology, food science, forest resources, home economics, horticulture, plant pathology and genetics, and poultry science.

BUREAU OF EDUCATIONAL STUDIES AND FIELD SERVICES

The fundamental objective of the Bureau in accomplishing its service mission is to provide educational consultants as requested by the public schools of Georgia, the region, other colleges, and the State Department of Education. The services of the Bureau are available on a continuing basis to local school boards and other educational agencies for the analysis of problems, for the improvement of educational practices, and for continual updating of the knowledge and skills of administrative, supervisory, and teaching personnel.

CAMPUS BUS SYSTEM

A fleet of 19 buses provides campus transportation for students and staff. Seven routes are operated from 7:00 a.m. to 6:00 p.m., with a night route from 6:00 p.m. to 10:30 p.m. The campus bus system carried 5,165,032 passengers in fiscal year 1976.

CENTRAL DUPLICATING SERVICE

A completely equipped quick copy center for camera ready material is located in the basement of the Business Services Building for departments and units listed in the University or Student Chart of Accounts with pick-up and delivery and other services such as folding, drilling, copy reduction, and collating.

CENTRAL OFFICE SUPPLY

The University-operated warehouse and issuing facility for office supplies and related items provides supplies at cost to University departments or units listed in the University or Student Chart of Accounts. Catalogs are provided, and supplies are delivered from the Business Services Annex.

COOPERATIVE EXTENSION SERVICE

The Extension Service acts as an educational service arm for the University providing information and training to Georgia citizens. Staff members represent both the University and USDA and present educational programs in agriculture, home economics, community and rural development, 4-H, and youth development. Programs are based on research from Experiment Stations and coordinated at the local level by County Extension Chairmen in response to needs articulated by local Program Development Boards.

THE DIVISIONS OF RESEARCH AND SERVICES: COLLEGE OF BUSINESS ADMINISTRATION

The Research Division serves to stimulate and promote research activities by the College of Business faculty, and to provide the faculty with support services such as mail surveys, outside funding information, grant preparation, editorial assistance, summer research grants, and other research aids. In addition, the Division conducts a program of State and regional economic analysis through the Center for Regional Studies and the Georgia Economic Forecasting Project. The Division of Services is charged with ascertaining the service needs of the public and developing programs to meet those needs through a planned visitation program by field representatives and close coordination with the faculty in program development.

THE GEORGIA CENTER FOR CONTINUING EDUCATION

The Center for Continuing Education is a higher education arm of the University through which educational programs are planned, organized, and implemented in response to identified and expressed diverse needs of adult Georgians, as manifested individually or through a multitude of organized groups, ranging from official government agencies to business organizations to civic, cultural, and educational groups. The Center serves as a contact point through which University faculty, clientele groups, and Center staff work in concert to bring to the adult publics the relevant resources of the University and the University System.

The Center fulfills this function through conducting conferences in Center facilities; University credit courses, held on and off campus, in the evenings and on Saturdays; non-credit courses, on and off campus; independent study or home study; and educational television broadcasts over WGTV. Other services provided by the Center include film production and other educational multi-media production, cooperative programming with other higher education institutions throughout the State, film library operations, and consultation and supportive services to organizations and agencies through the Center.

GEORGIA MUSEUM OF ART

The Georgia Museum of Art was founded in 1945 by Alfred H. Holbrook, and is dedicated to the concept of instructional service not only to the University but to the community as well. The permanent collection of the Museum now numbers over 4,000 works of art, with primary emphasis on American artists. Extensive files are maintained on each object for the benefit of the student. The Museum cooperates with various departments in scheduling exhibits of common interest.

THE GEORGIA REVIEW

The Georgia Review is a University quarterly, publishing essays, fiction, poetry, and book reviews on many subjects in a variety of styles and tones. It draws from a wide range of interests, including literature, history, philosophy, architecture, film, and the musical and visual arts. By discriminating the more permanent from the more ephemeral values, the *Review*, appeals both to specialists and to general readers everywhere.

THE INSTITUTE FOR BEHAVIORAL RESEARCH

The Institute for Behavioral Research is a multidisciplinary research organization. Its purpose is to encourage a pooling of the expertise of staff members and graduate students from such departments as sociology, psychology, political science, management, economics, and educational psychology in an attack on significant social and behavioral problems.

INSTITUTE OF COMMUNITY AND AREA DEVELOPMENT

Technical and planning activities of ICAD are directed to community, area development organizations, state agencies, or other public groups. ICAD is involved in consultations, studies or research projects, as well as conferences, forums, and panels throughout the State.

THE INSTITUTE OF CONTINUING LEGAL EDUCATION IN GEORGIA

The Institute of Continuing Legal Education in Georgia represents the combined efforts of The University of Georgia School of Law, the Law Schools of Emory and Mercer Universities and the State Bar of Georgia to provide a continuing legal education program for the Georgia lawyer. Through this continuing legal education program the Institute provides the lawyer an excellent opportunity to keep up with the developments in his profession, to increase his own expertise, and to benefit from the knowledge of experts in various fields.

INSTITUTE OF ECOLOGY

The Institute of Ecology supports and encourages multi-disciplinary research and service activities in ecology involving faculty and graduate students from a variety of departments, schools, and research sites. The organization operates the Savannah River Ecology Laboratory for the U.S. Energy Research and Development Administration at the Savannah River Plant, and supports research in marine and freshwater ecology, thermal ecology, radiation ecology, mineral cycling, tropical and temperate forests, old field dynamics, agroecosystems, granite outcrops, and swamps.

THE INSTITUTE OF GOVERNMENT

The Institute is responsible for an interdisciplinary program designed to improve the knowledge and skills of elected and appointed State and local public officials in Georgia. To accomplish its purposes, the Institute of Government conducts nearly 300 training programs and conferences each year, engages in an extensive publications and research program, and offers technical assistance to public officials.

INSTITUTE OF HIGHER EDUCATION

The Institute of Higher Education provides resources for the professional development of administrators, faculty members, and educational researchers. The Institute's staff members are concerned with curriculum development, program evaluation, institutional research, management support skills, and overall institutional effectiveness. The Faculty Development in Georgia Program provides the opportunity each year for a number of faculty members in Georgia colleges, public or private, to continue their graduate education at the University. Under cooperative arrangements with other agencies and institutions the Institute works with two-year and four-year colleges in the State and surrounding region.

THE INSTITUTE FOR NATURAL PRODUCTS RESEARCH

The Natural Products Laboratory was established in 1969 to promote research in the chemistry of naturally occurring substances of plant origin, and was reorganized by Board of Regents action in 1976 as an Institute for Natural Products Research. The purpose of the reorganization is to extend the scope of current research on alkaloids, terpenes, and synthetic methods to include a program of chemical research on plant species native to Georgia and the Southeastern region. This program will involve the isolation, characterization, and elucidation of chemical structure of new compounds of possible use as drugs for the treatment of human disease, with especial attention being given to the search for compounds active against various types of cancer. It is anticipated that some of the compounds isolated will possess significant potential in basic and applied medical research.

THE INSTITUTE OF NATURAL RESOURCES

The Institute conducts research and coordinates programs and activities pertaining to (1) the Marine Institute, the Skidaway Institute of Oceanography, the Marine Extension Service, and the Sea Grant program; (2) use and management of biological resources - fish, wildlife, forests; and (3) use and management of water and mineral resources. The Institute cooperates closely with other units of the University System and, upon request, acts in an advisory capacity to government and private organizations on matters relating to natural resources.

INSTRUCTIONAL RESOURCES CENTER

The Center was established to assist colleges, schools, departments, and individual faculty members in the utilization of modern media in instruction. The preparation of visuals for television, the preparation of slides, photographs, and duplicate slides, the duplication of audio tapes, and closed-circuit television production are a part of the resources available in the IRC.

MARINE EXTENSION SERVICE

The University of Georgia Marine Extension Service provides both the mechanics for transfer of information and the proficiency for solving problems related to the State's marine resources. Formally established in July 1971, the program now carries out research, advisory, and educational activities from three geographic vantage points - Athens, Brunswick, and Skidaway Island. From the Athens campus, socioeconomic and legal studies are carried out in the broad area of coastal zone management. In Brunswick, a staff of marine fisheries specialists helps commercial fishermen solve problems affecting operating efficiency, a food scientist and staff work closely with seafood processors; and a marine ecologist and staff offer help to industry and government agencies in applying estuarine ecology and marine science to marine resource management problems. At the Marine Resources Extension Center on Skidaway Island the staff of specialists in marine mineral resources, coastal hydrography, and marine science education carries out an educational program designed to serve all age levels.

MARINE INSTITUTE

The University of Georgia Marine Institute, located on Sapelo Island, has been a center for basic research since it was founded in 1953. Sapelo's virtual lack of disturbance by man's activities in the coastal zone makes the Island an excellent environment for studies of estuarine and shallow coastal water ecosystems.

OFFICE OF COMPUTING ACTIVITIES

The Office of Computing Activities has three major computer hardware systems installed and interconnected which service not only the University of Georgia but also the University System of Georgia Network. Four divisions operate within OCA: the Educational and Technical Support Services Division provides a constant interface with all on-campus and remote users in the University System; the Institutional Services Division provides for software development to meet the information needs of the University administration. The Computer Services Division is responsible for system programming, control and data entry, and the management, scheduling and operation of all computers and associated hardware in the OCA to meet the computing needs of the user communities; and the Information Services Division provides literature search services for the research and graduate student staff of the University.

OFFICE OF DEVELOPMENT AND UNIVERSITY RELATIONS

The Vice President for Development and University Relations is responsible for the planning, coordination, and conduct of all programs involving alumni and friends of the University, including institutional public relations and fund raising. The Office of the Vice President embraces three functional units: The Office of Alumni Relations works with the Alumni Society and various school and college groups conducting year-round programs involving alumni and friends throughout the United States. The Development staff is concerned with all aspects of fund-raising for the University and works closely with the various schools and colleges, their alumni constituents and friends. The University of Georgia Foundation, an independent incorporated group created to assist the University, handles endowments and unrestricted funds received from alumni, friends, and corporate donors. The Office of Public Relations is concerned with the gathering and dissemination of information about the University to members of the University community as well as to the various publics of the institution. An Office of Administrative Services supports the work of all offices under the Vice President.

OFFICE OF GENERAL RESEARCH

All non-agricultural research proposals and contracts are reviewed by the Office of General Research. The Office of General Research has the responsibility of overseeing budgets, expenditure accounting, and procedures for several State funded units and for contracts and grants administered through the office. It also provides help in locating sources of funds and in developing faculty members' research programs.

OFFICE OF INSTITUTIONAL RESEARCH AND PLANNING

The Office of Institutional Research and Planning has as a primary responsibility the collection, organization, and analysis of data to serve all aspects of the operation and management of the University. Student, faculty, staff and space utilization analyses, and studies related to these areas, are performed, as well as studies related to projected needs, program objectives, and efficiency and effectiveness in use of institutional resources.

POULTRY DISEASE RESEARCH CENTER

The Poultry Disease Research Center carries out basic and applied research programs in many of the diseases of domestic poultry which are of economic importance to the poultry industry of Georgia. Diagnostic, laboratory, and consultative services are provided to individuals and groups in all phases of poultry production.

PUBLIC SAFETY DIVISION

Responses to problems of life safety and property safety by the Public Safety Division of the University are twofold. The operational response includes: full peace officer authority, service, and assistance by the University of Georgia Police Department; specialized attention to radiation safety, laboratory safety, accident prevention, fire prevention, and environmental safety in accordance with guidelines established by the State and federal governments by the Safety Services Department; and vehicle registration and parking control by the Traffic Safety Department. The professional response provides professionally trained, academically involved student members of the University community. Upon leaving the University these members provide knowledge and stimulation for improvement in the areas of law enforcement and environmental safety concerns to their communities. The Northeast Georgia Police Academy provides basic recruit training, specialized training, and in-service training to State, municipal, and county law enforcement officers in the Northeast Georgia area. The Safety Services Department conducts training classes relating to safety for faculty, staff, students, and the surrounding community.

RESEARCH SHOPS AND FACILITIES

The Vice President for Research, through the Office of General Research, administers the following shops and service facilities which are available to the University:

Central Research Stores
Electronics Shop
Glassblowing Shop

Instrument Shop
Cartographic Lab
Geochronology Laboratory

RURAL DEVELOPMENT CENTER

The Rural Development Center, located at Tifton, is an educational and public service unit of the Cooperative Extension Service of The University of Georgia College of Agriculture. The program of the Center is directed toward the realization of four principal objectives: the improvement of agricultural and forest production efficiency; the development of advanced marketing techniques and expanded utilization of farm and forest commodities; the realization of comprehensive community development; and the continuation of manpower training and development.

UNIVERSITY BOOKSTORE

The University Bookstore, a retail facility specializing in textbooks, paperback books, educational supplies, art supplies, sundries, and UGA monogrammed novelties, is located in a modern facility at the corner of Sanford Drive and Baxter Street Extension.

UNIVERSITY FOOD SERVICES

The primary concern of University Food Services is the satisfaction of the needs and desires of the students. The selection of food, the type of services, and the hours of service are all geared to what is felt will satisfy the majority. Particular care is taken to ensure service of attractive wholesome food in generous servings at the lowest possible price.

Three dining facilities, Bolton Hall, Snelling Hall, and the Bulldog Room in the Union, are maintained by the University Food Services for students, faculty, and staff. In addition, the McWhorter Dining Hall serves the varsity athletes. The University Food Services also provides banquet services and catering for University groups.

THE UNIVERSITY OF GEORGIA BOTANICAL GARDEN

The Botanical Garden serves the University as an outdoor laboratory for regular and special classes of plant oriented disciplines at the University, as well as for certain types of research. Several research projects have been completed and others are underway. Research and instructional activities permitted in the Garden are determined under guidelines decided by the Botanical Garden Board of Advisors.

UNIVERSITY OF GEORGIA GOLF COURSE

A teaching and recreational facility available to students, faculty, staff, alumni and their dependents, plus conferees, the University of Georgia Golf Course is located on Milledge Avenue Extension. The 18 hole championship course, designed by Robert Trent Jones, also includes driving range, putting greens and chipping green, with "golfing weather" hours Monday through Friday from 8:30 a.m. until sundown, and weekends and holidays from 7:30 a.m. until sundown. The Pro Shop carries a complete line of golfing equipment and supplies.

UNIVERSITY OF GEORGIA LIBRARIES

The University of Georgia Libraries include the Main (Ilah Dunlap Little) Memorial Library, the Science (South Branch) Library, the Law Library, the Georgia Center Library, and various lab collections on the UGA campus, with experiment station libraries in Griffin, Tifton, and Skidaway.

The functions of a research library include supporting undergraduate instruction, graduate instruction, professional schools, and faculty research. The usefulness of a research library's collections extends to other educational institutions, and into the practical everyday affairs of commerce, industry, and government across the entire State or region.

Growth of Library Resources		
	Added 1975-76	Total June 1976
Books, Serials, Documents	96,422	1,619,104
Microforms		
Microfilm	6,242	83,256
Microfiche	117,503	562,694
Microcards	0	114,462
Microprint	11,324	413,667
(Total Microforms)	(135,069)	(1,174,079)
Manuscripts	3,468 ^a	*
Broadsides	33	*
Photographs		
Pictures	466	*
Maps	5,314	208,074
Aerial Photographs	134	120,656
Slides	0	38,416
Filmstrips	1	257
Motion Pictures	0	31
Sound Recordings	42	16,759
(Records)		
Tape Recordings	1,716	4,209
Magnetic Tapes	241	*
Punched Cards	0	*
Music Scores & Sheet Music	6,408	30,433
Index Cards	14,622	256,526

* Not Available

^a Effective 1975/1976 Manuscript count will consist of the number of items in collections which have been completely processed.

UNIVERSITY OF GEORGIA PRESS

The University of Georgia Press was organized in the summer of 1938 with the stated purpose of publishing scholarly books and monographs. Its primary function is to publish the results of research and scholarship for the benefit of scholars and students and to publish readable and authentic interpretations of such material for the educated layman. The Press also publishes works which interpret and preserve the history and culture of the State and region.

THE UNIVERSITY OF GEORGIA RESEARCH PARK

The University of Georgia Research Park is being developed as a center of research and development, service, educational and training facilities for University, State, and federal, and private organizations which relate to the teaching, research, and service programs being conducted on campus. The activities of facilities located in the Research Park are related to applied studies in animal and plant pathology, agricultural engineering, bacteriology, botany, entomology, chemistry, pharmacy, physics, psychology, geology, food science, poultry science, forest management, work utilization, water pollution, zoology, ecology, community and area development, research into performance and function of the mentally retarded together with preparation of personnel to work with them, and other areas.

Facilities (Controlling Agency)

Agricultural Research Facilities (UGA)
Arthritis Research Facility (UGA)
Botany and Biochemistry Research (UGA)
Cobalt 60 Irradiation Facility (UGA)
Georgia Retardation Center, Athens Branch (State)
Institute of Ecology (UGA)
Northeast Georgia Area Planning and Development Commission (Regional)
Poultry Disease Research Center (UGA)
Psychology Animal Behavior Laboratory (UGA)
Richard B. Russell Agricultural Research Center (Federal)
Riverbend Research Laboratories (UGA)
Soil Testing and Analysis Laboratory (UGA)
Southeast Environmental Research Laboratory (Federal)
Southeast Poultry Research Laboratory (Federal)
Southern Regional Poultry Genetics Laboratory (UGA)

UNIVERSITY PRINTING DEPARTMENT

Quality printing services are provided to departments or units listed in the University or Student Chart of Accounts by the University Printing Department. The printing plant, equipped for type-setting, off-set printing, letter-press printing, and binding, is presently located in the basement area of Terrell Hall, pending the completion in 1977 of a new building for the printing and related departments.

VETERINARY MEDICAL EXPERIMENT STATION

The Veterinary Medical Experiment Station functions in coordinating research on the fundamental aspects of comparative medicine and the clinical sciences. The educational mission of the Station is, therefore, oriented toward the strengthening of the graduate programs in the biomedical sciences. The service function is manifest in the consultative roles of its members in comparative and laboratory animal medicine programs of the University System agencies and organization. The research and service functions are extended to the animal industry of Georgia.

PHYSICAL FACILITIES

**UNIVERSITY OF GEORGIA
MAIN CAMPUS**

<i>Principle Use of Buildings</i>	<i>Number of Buildings</i>	<i>Gross Area Square Feet</i>	<i>Construction Cost</i>
Administration	10	206,500	\$ 1,313,000
Academic	119	4,178,400	82,133,000
General	54	873,800	9,585,000
Subtotal	183	5,258,700	93,031,000
Residence Halls	16	1,168,900	16,944,000
Married Housing	17	514,300	6,485,000
Subtotal	33	1,683,200	23,429,000
Total	216	6,941,900	\$ 116,460,000

Source: Office of Institutional Research and Planning

NUMBER OF ROOMS BY BASIC ROOM TYPE

270 Classrooms
350 Teaching Laboratories
950 Laboratories
3,850 Offices

Source: Office of Institutional Research and Planning

**UTILIZATION OF INSTRUCTIONAL FACILITIES
Fall 1976**

	<i>Classrooms</i>	<i>Teaching Laboratories</i>
Hours Used/Week	27 Hours	22 Hours
% Student Stations Occupied When Room Is In Use	66 %	71 %
Average Class Size Per Room	31 Students	21 Students

Source: Office of Institutional Research and Planning

BUILDING COST SUMMARY BY YEARS OF COMPLETION*
MAIN CAMPUS

	<i>Construction Cost</i>	<i>Total Gross Square Feet</i>	<i>Percent of Total Square Footage</i>	<i>Cost Per Square Feet</i>
Pre 1900	\$ 1,093,000	222,600	3%	\$ 4.90
1901-1930	2,587,000	454,600	7	5.70
1931-1950	6,754,000	986,800	14	6.80
1951-1960	20,333,000	1,252,400	18	16.20**
1961-1965	15,143,000	1,089,500	16	14.00***
1966-1970	31,929,000	1,633,000	23	19.60
1971-1976	38,621,000	1,303,000	19	29.60
 Total	 \$ 116,460,000	 6,941,900	 100%	 \$ 16.80

* As of September 1976

** Includes major science center buildings

*** Includes major housing buildings

Source: Office of Institutional Research and Planning

**MAJOR ACADEMIC BUILDINGS AND
DATE OF INITIAL OCCUPANCY
(Athens Campus)**

<i>Building Name</i>	<i>Initial Occupancy</i>	<i>Building Name</i>	<i>Initial Occupancy</i>
Academic	1831	Dawson Hall	1932
Aderhold (Education)	1971	Dawson Hall Addition	1971
Agricultural Engineering Center	1966	Demosthenian Hall	1824
Agricultural Extension	1937	Denmark Hall (Environmental Design)	1901
Alumni House	1943	Dudley Hall	1942
Animal Quarters Annex	1974	Ecology	1974
Automotive Center	1971	Fain Hall	1942
Baldwin Hall	1938	Family Housing Office	1970
Barrow Hall	1911	Fine Arts	1941
Barrow Hall Lab	1936	Food Science	1959
Biological Sciences	1960	Forest Resources No. 1	1938
Biological Sciences Addition	1972	Forest Resources No. 2	1968
Bishop House	1942	Forest Resources No. 3	1968
Bolton Hall	1963	Garden Club of Georgia	1950
Boyd Graduate Rsch. Center	1968	Geography, Geology, Speech	1960
Brooks Hall (Business Admin.)	1924	Geology Hydrothermal Lab	1962
Brooks Hall Addition (Business Admin.)	1972	Georgia Center for Continuing Education	1956
Business Services	1968	Georgia Center Addition	1966
Business Services Annex	1969	Georgia Museum of Art	1907
Candler Hall	1901	Gilbert Health Services	1942
Central Research Stores	1969	Gilbert Health Services Addition	1973
Chapel	1832	Golf Pro Shop	1968
Chemistry	1960	Greenhouse Complex (Rsch. Park)	1969
Chemistry Addition	1971	Griggs Hall	1942
Child Development Lab	1940	Hardman Hall	1918
Child Development Lab Addition	1970	Hoke Smith Annex	1940
Clark Howell	1937	4-Home Management Houses	1940
Coliseum	1964	Industrial Arts	1971
Conner Hall	1908	Joe Brown Hall	1932
Conner Hall Renovation	1975	Journalism	1968
Dairy Science	1939		

CONT'D: MAJOR ACADEMIC BUILDINGS AND DATE OF INITIAL OCCUPANCY

<i>Building Name</i>	<i>Initial Occupancy</i>	<i>Building Name</i>	<i>Initial Occupancy</i>
Journalism Auditorium	1968	Physical Plant Addition	1970
Law School	1932	Physics	1959
Law School Addition	1967	Physics Addition	1969
Le Conte Hall	1938	Poultry Disease Research	1958
Library, Main (Ilah Dunlap Little)	1952	President's House	1956
Library, Main Addition	1974	Psychology	1968
Library, Science	1968	Psychology Animal Labs	1968
Livestock-Poultry	1960	Psychology Animal Lab Annex	1969
Lucy Cobb	1958	Psychology Auditorium	1968
Lucy Cobb-Carriage House	1808	Public Safety	1966
Lucy Cobb-Gym	1905	Public Safety Addition	1976
Lucy Cobb-Margaret Hall	1898	Recording for the Blind	1967
Lucy Cobb-Seney-Stovall Chapel	1885	River Bend Research Labs	1974
Lumpkin House	1850	Sanford Stadium	1929
Lustrat House	1847	Sanford Stadium Dressing Rooms	1971
Meigs Hall	1905	Sanford Stadium Expansion	1967
Memorial Hall	1923	Snelling Hall	1940
Military Army ROTC	1931	Soil Testing Lab	1970
Miller Plant Sciences	1972	Soil Tillage Lab	1968
Moore College	1874	Soule Hall	1920
New College	1823	South Thomas Street Building	1967
Old College	1801	Stegeman Hall	1943
Park Hall	1938	Stegeman Hall Addition	1953
Park Hall Addition	1970	Terrell Hall	1904
Peabody Hall	1913	Tucker Hall	1961
Personnel Services	1951	University Bookstore	1968
Pharmacy	1964	Veterinary Medicine	1949
Phi Kappa Hall	1834	Veterinary Medicine Addition (ICM)	1973
Physical Education	1928	Visual Arts	1961
Physical Education Addition	1969	Visual Arts Annex	1951
Physical Plant	1958	Waddel Hall	1807

Source: Office of Institutional Research and Planning

**MAJOR BUILDING PROJECTS
COMPLETED 1960-1976**

<i>Project</i>	<i>Completion Date</i>	<i>Federal Funds</i>	<i>University & State Funds</i>	<i>Other Funds</i>	<i>Total Project Cost</i>
Physics	1959*	\$ 30,000	\$ 1,670,000	\$	\$ 1,700,000
Food Science	1959*		1,310,000		1,310,000
Biological Sciences	1960	600,000	3,000,000		3,600,000
Chemistry	1960	33,000	2,490,000		2,523,000
Geography-Geology	1960		1,550,000		1,550,000
Livestock Poultry	1960		1,230,000		1,230,000
Visual Arts	1961		919,000		919,000
Six Dormitories	1961		3,180,000		3,180,000
Geology Hydrothermal Lab	1962		32,000		32,000
Georgia Seed Lab (State)	1963		253,000		253,000
Stadium Bridge	1963		255,000		255,000
Creswell & Bolton Halls	1963		3,620,000		3,620,000
Laundry & Dry Cleaning Building	1963		100,000		100,000
Horticulture Bldg. (Tifton)	1963		360,000		360,000
Pharmacy Building	1964	100,000	1,680,000		1,780,000
Coliseum	1964		4,090,000		4,090,000
Forestry Research Lab (Federal)	1964	611,000			611,000
Poultry Disease Lab (Federal)	1964	900,000			900,000
Married Student Housing (105 Units)	1964		1,025,000		1,025,000
Animal Lab (Vet. Med.)	1964		40,000		40,000
Subtotal 1960-1965		\$ 2,274,000	\$ 26,804,000	\$	\$ 29,078,000
Continuing Education Addition	1966	\$	\$ 457,000	\$	\$ 457,000
Agricultural Engineering	1966	675,000	1,300,000		1,975,000
Public Safety	1966		50,000		50,000
Brumby Hall	1966		3,300,000		3,300,000
200 Married Student Apartments	1966		2,000,000		2,000,000
Food Science Lab (Griffin)	1966		750,000		750,000
Animal Disease Lab (Tifton)	1966		460,000		460,000
Campus Electrical System Expansion	1966		225,000		225,000

*Science center buildings include the entire complex.

CONT'D: MAJOR BUILDING PROJECTS COMPLETED 1960-1976

<i>Project</i>	<i>Completion Date</i>	<i>Federal Funds</i>	<i>University & State Funds</i>	<i>Other Funds</i>	<i>Total Project Cost</i>
McWhorter Hall	1967	\$	\$ 978,000	\$	\$ 978,000
Russell Hall	1967		3,600,000		3,600,000
Recording for the Blind, Inc.	1967		(Callaway Foundation)	100,000	100,000
Agricultural Engineering & Lab (Tifton)	1967		115,000		115,000
Alpha Chi Omega Sorority	1967		(Alpha Chi Omega Corp.)	184,000	184,000
Delta Phi Epsilon Sorority	1967		(Delta Phi Epsilon Corp.)	293,000	293,000
Law School Addition	1967		2,998,000		2,998,000
Central Heating & Distribution System Expansion	1967		420,000		420,000
Sanford Stadium Expansion	1967		(Athletic Association)	3,295,000	3,295,000
Boyd Graduate Studies Center and Science Library	1968	2,074,000	3,559,000		5,633,000
Business Services	1968**		81,000		81,000
Forest Resources Addition	1968	640,000	1,276,000		1,916,000
Golf Pro Shop	1968		42,500		42,500
Poultry Disease Research Addition to Main Lab	1968		52,200		52,200
Soil Tillage Lab	1968		63,000		63,000
Psychology Animal Lab	1968	94,000			94,000
University Bookstore	1968		850,000		850,000
General Classroom Building	1968	1,640,000	4,510,000		6,150,000
Physics Addition	1969		128,100		128,100
Snelling Hall Renovation	1969		426,000		426,000
Alumni House Renovation	1969		148,000		148,000
Greenhouse Complex (5)	1969	65,000	50,000		115,000
Central Research Stores	1969		150,000		150,000
Psychology Animal Lab Annex	1969	26,000	120,000		146,000
Kappa Alpha Fraternity Renovation	1969		119,000		119,000
Georgia Center (Stone Mountain) WGTV	1969		100,000		100,000
Academic Building Addition and Renovation	1969		160,000		160,000
Business Services Annex	1969		105,000		105,000
Bulldog Room Renovation	1969		128,000		128,000

**Occupancy Date

CONT'D: MAJOR BUILDING PROJECTS COMPLETED 1960-1976

<i>Project</i>	<i>Completion Date</i>	<i>Federal Funds</i>	<i>University & State Funds</i>	<i>Other Funds</i>	<i>Total Project Cost</i>
Women's Physical Education Addition	1969	\$ 333,000	\$ 667,000	\$	\$ 1,000,000
Park Hall Addition	1970	333,000	667,000		1,000,000
Child Development Lab Addition	1970	147,000	295,000		442,000
Soil Testing Lab	1970		263,000		263,000
ADP Center Renovation	1970		225,900		225,900
Steam Distribution System Addition	1970		386,500		386,500
Married Student Housing Office/Warehouse	1970		216,400		216,400
Physical Plant Addition	1970		126,000		126,000
Barrow Hall Renovation for Electron Microscope Lab	1970		155,200		155,200
Avian Medicine Clinics Lab	1970		100,000		100,000
Auditorium Building (Plains)	1970		150,500		150,500
Subtotal 1966-1970		\$ 6,027,000	\$ 31,973,300	\$ 3,872,000	\$ 41,872,300
Addition to Home Economics	1971	\$ 309,200	\$ 984,100	\$	\$ 1,293,300
Aderhold (Education)	1971	1,550,000	3,112,000		4,662,000
Industrial Arts	1971	190,000	384,000		574,000
Chemistry Annex	1971	766,600	1,672,800		2,439,400
Administration Building Rural Development Center (Tifton)	1971		720,000		720,000
Beef Cattle Barn	1971		160,000		160,000
Greenhouse, Phase 1 Addition to Biological Sciences	1971	71,000	51,000		122,000
Demonstration Building (Rock Eagle Park)	1971		135,000		135,000
Three Headhouses College of Agriculture	1971	53,400	62,100		115,500
Paving and Site Work Rural Development Center (Tifton)	1971		50,000		50,000

CONT'D: MAJOR BUILDING PROJECTS COMPLETED 1960-1976

<i>Project</i>	<i>Completion Date</i>	<i>Federal Funds</i>	<i>University & State Funds</i>	<i>Other Funds</i>	<i>Total Project Cost</i>
Renovations of Business Services Annex and Personnel Services	1971	\$	\$ 170,000	\$	\$ 170,000
Silos and Irrigation System Coastal Plain Experiment Station	1971		89,000		89,000
FAPP Research Broiler House Vet. Med.	1971		37,100		37,100
Veterinary Medicine Office (12 Units)	1971		47,000		47,000
Automotive Center	1971		150,000		150,000
Sanford Stadium Dressing Rooms	1971		(Athletic Association)	190,000	190,000
Hardman Hall Renovation	1971		77,100		77,100
Addition to Biological Sciences	1972	685,000	511,400		1,196,400
Addition to Business Administration	1972	500,000	1,192,800		1,692,800
Miller Plant Sciences	1972	1,400,000	2,503,300		3,903,300
Campus Heating System Expansion	1972		1,013,000		1,013,000
Chemistry Fixed Equipment	1972		84,800		84,800
Home Economics Fixed Equipment	1972		49,500		49,500
Married Student Housing (240 Units)	1972		3,674,500		3,674,500
Botany Greenhouse, Phase II	1972	290,000			290,000
Biological Science Lab Equipment	1972	81,600			81,600
Natural Science Building Rock Eagle 4-H Club Ctr.	1972		60,200		60,200
Veterinary Medicine Addition (Institute of Comparative Medicine)	1973	685,000	922,500		1,607,500
Veterinary Medicine Interim Facilities (4 buildings)	1973		571,800		571,800
Tennis Courts	1973		(Student Athletic Fund & Athletic Association)	46,500	46,500
Livestock Sales Facility (Tifton)	1973		75,000		75,000

CONT'D: MAJOR BUILDING PROJECTS COMPLETED 1960-1976

<i>Project</i>	<i>Completion Date</i>	<i>Federal Funds</i>	<i>University & State Funds</i>	<i>Other Funds</i>	<i>Total Project Cost</i>
Gilbert Health Services Addition	1973	\$	\$ 1,232,500	\$	\$ 1,232,500
Mary Lyndon Hall Renovation	1973		524,100		524,100
Miller Plant Sciences Lab Equipment	1973	318,300	115,400		433,700
Paving, Married Student Housing	1973		69,500		69,500
Road to Botanical Garden Headquarters Building	1973		18,000		18,000
Renovations to Joe Brown Chi Phi Fraternity	1973		175,000		175,000
Renovations to Alumni House (Athens)	1973		(Chi Phi House Corp.)	135,000	135,000
Cattle Feeding Facility (Tifton)	1973		(Alumni Association)	33,700	33,700
Swine Research Center (Tifton)	1974		690,600		690,600
Swine Research Center (Athens)	1974		411,600		411,600
General Research Building	1974		382,900		382,900
Site Development Vet. Med. (Athens)	1974		1,872,600		1,872,600
Main Library Annex (Athens)	1974		145,400		145,400
REA Cottage, Rock Eagle 4-H Center (Eatonton)	1974		5,188,000		5,188,000
Water Distribution System (Griffin)	1974		(State Self Insurance)	71,600	71,600
Clark Howell Hall Renovation	1974		41,000		41,000
Botanical Gardens Waterline	1974		80,000		80,000
Animal Quarters Annex	1974	257,800	37,100		317,800
Livestock Sales Facility Phase 11 (Tifton)	1974		60,000		60,000
Joe Brown Renovation	1974		153,000		153,000
Boar Testing Station	1974		175,000		175,000
Dairy Research Building	1974		218,200		218,200
Research Building (Tifton)	1974		332,100		332,100
			1,200,000		1,200,000

CONT'D: MAJOR BUILDING PROJECTS COMPLETED 1960-1976

<i>Project</i>	<i>Completion Date</i>	<i>Federal Funds</i>	<i>University & State Funds</i>	<i>Other Funds</i>	<i>Total Project Cost</i>
Ecology Building	1974	\$	\$ 1,605,600	\$	\$ 1,605,600
Livestock Pavilion, N.W.					
Branch Station (Calhoun)	1975		320,000		320,000
Support Facility (Skidaway)	1975		687,600		687,600
Pike County Irrigation					
System (Bledsoe Farm)	1975		101,700		101,700
Pike County Farm Buildings					
(Griffin)	1975		123,800		123,800
Dairy Science Center	1975		1,464,800		1,464,800
Pesticide Building (Tifton)	1975		54,700		54,700
Pesticide Building (Griffin)	1975		70,800		70,800
Addition to University					
Bookstore	1975		71,000		71,000
Conner Hall Renovation	1975		2,608,500		2,608,500
Botanical Garden					
Headquarters Building					
(Athens)	1975		(Callaway Foundation)	646,400	646,400
Sewer Collection Facility					
Phase II (Skidaway)	1975		439,000		439,000
Dairy Cattle Facility					
(Tifton)	1975		705,400		705,400
Poultry Research Center					
(Athens)	1975		1,919,000		1,919,000
Subtotal 1971-1975		\$ 7,157,900	\$ 41,853,900	\$ 1,123,200	\$ 50,135,000
Pesticide Building					
(Plains)	1976	\$	\$ 50,000	\$	\$ 50,000
Pesticide Building					
(Midville)	1976		50,000		50,000
Fine Arts Renovation	1976		1,064,400		1,064,400
Rural Development					
Center - Phase II	1976		1,469,700		1,469,700
Plant Sciences					
Casework	1976		154,000		154,000
Pesticide Building					
(Blairsville)	1976		50,000		50,000

CONT'D: MAJOR BUILDING PROJECTS COMPLETED 1960-1976

<i>Project</i>	<i>Completion Date</i>	<i>Federal Funds</i>	<i>University & State Funds</i>	<i>Other Funds</i>	<i>Total Project Cost</i>
Shellfish Mariculture (Skidaway)	1976	\$	\$ 455,000	\$	\$ 455,000
Public Safety Addition	1976		306,000		306,000
Gilbert Health Services Renovation	1976		82,500		82,500
Electrical Distribution System - Phase I	1976		1,162,300		1,162,300
Subtotal Sept., 1976		\$	\$ 4,843,900	\$	\$ 4,843,900
TOTAL 1960-1976		\$ 15,458,900	\$ 105,475,100	\$ 4,995,200	\$ 125,929,200

Source: Office of Campus Planning

PROJECTS CURRENTLY UNDER CONSTRUCTION*

<i>Project</i>	<i>Estimated Completion Date</i>	<i>Federal Funds</i>	<i>University and State Funds</i>	<i>Other Funds</i>	<i>Total Project Cost</i>
Main Steam Power Plant Addition	1976		\$ 590,000		\$ 590,000
Research Building (Griffin)	1976		1,559,000		1,559,000
Addition to Ecology	1976		544,600		544,600
Remodeling Vet. Building (Tifton)	1976		285,000		285,000
College of Vet. Medicine - HVAC Renovation	1976		603,900		603,900
Plant Sciences Casework	1976		154,000		154,000
Printing Building	1977		674,000		674,000
Addition to Vet. School	1978		6,214,000		6,214,000
TOTAL			\$ 10,624,500		\$ 10,624,500

* As Of October, 1976

Source: Office of Campus Planning

AUTHORIZED PROJECTS BEING PLANNED*

<i>Project</i>	<i>Estimated Bid Date</i>	<i>Federal Funds</i>	<i>University and State Funds</i>	<i>Other Funds</i>	<i>Total Project Cost</i>
Academic Building Addition to Snelling Hall	Undetermined		\$ 2,500,000		\$ 2,500,000
Fisheries Ext. Building (Brunswick)	Undetermined		350,000		350,000
Holding Pens Animal Diagnostic Lab (Tifton)	Undetermined		235,000		235,000
TOTAL			\$ 3,085,000		\$ 3,085,000

* As Of October, 1976

Source: Office of Campus Planning

LAND HOLDINGS

<i>Location</i>	<i>County</i>	<i>Acres</i>
The University of Georgia Campus		
Main Campus	Clarke	575
Botanical Garden	Clarke	293
Related Areas	Clarke	567
		1,435
College Station		
Main Areas	Clarke	2,188
Dairy Cattle Research Farm	Clarke	445
Dairy Cattle Research Farm	Oglethorpe	125
Beef Cattle Research Farm	Oglethorpe	813
Beef Cattle Research Farm	Wilkes	148
Plant Science Farm	Oconee	433
Hardman Forest	Jackson	456
Watson Springs Forest	Greene	607
		5,215
Georgia Station		
Main Areas	Spalding	943
Cowan Farm	Spalding	66
Double Cabins Farm	Spalding	170
Georgia Mountain Branch Station	Union	394
Northwest Georgia Branch Station	Floyd	907
Northwest Georgia Branch Station	Gordon	329
Central Georgia Branch Station (including Carpenter tract)	Morgan	400
	Putnam	13,759
Pike County Farm	Pike	81
Bledsoe Farm	Pike	151
Montezuma Peanut Plant	Macon	18
		17,218
Coastal Plain Station		
Main Campus	Tift	1,892
Bowen Farm	Tift	75
Gibbs Farm	Tift	308
Ponder Farm	Tift	201
Ponder Farm	Worth	104
Range Grazing Station (Lapaha)	Berrien	2,804
Field Station (Shade Tobacco Station)	Decatur	423
S.E. Georgia Branch Station	Burke	469
S.W. Georgia Branch Station	Sumter	440
Americus Plant Materials Center	Sumter	13
		6,729
Cooperative Extension Service		
Rock Eagle 4-H Center	Putnam	1,461
Total		32,058
Source: Office of Campus Planning		